

Product datasheet for **TA323441**

BAG5 Rabbit Polyclonal Antibody

Product data:

Product Type:	Primary Antibodies
Applications:	WB
Recommended Dilution:	WB: 500-2000 WB positive control: A549, Hela and 293T cells
Reactivity:	Human, Mouse, Rat
Host:	Rabbit
Isotype:	IgG
Clonality:	Polyclonal
Immunogen:	Fusion protein corresponding to C terminal 350 amino acids of Human Bcl-2-associated athanogene 5
Formulation:	PBS pH7.3, 0.05% NaN ₃ , 50% glycerol
Concentration:	lot specific
Purification:	Antigen affinity purification
Conjugation:	Unconjugated
Storage:	Store at -20°C as received.
Stability:	Stable for 12 months from date of receipt.
Predicted Protein Size:	51 kDa
Gene Name:	BCL2 associated athanogene 5
Database Link:	NP_001015048 Entrez Gene 70369 Mouse Entrez Gene 366734 Rat Entrez Gene 9529 Human Q9UL15
Background:	The protein encoded by this gene is a member of the BAG1-related protein family. BAG1 is an anti-apoptotic protein that functions through interactions with a variety of cell apoptosis and growth related proteins including BCL-2; Raf-protein kinase; steroid hormone receptors; growth factor receptors and members of the heat shock protein 70 kDa family. This protein contains a BAG domain near the C-terminus; which could bind and inhibit the chaperone activity of Hsc70/Hsp70. Three transcript variants encoding two different isoforms have been found for this gene.

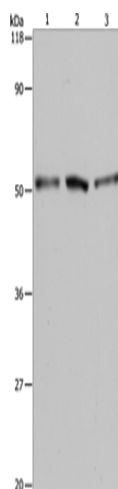


[View online »](#)

Synonyms: BAG-5

Protein Families: Druggable Genome

Product images:



Gel: 10%SDS-PAGE

Lysate: 40 µg

Lane 1-3: A549 cells

HeLa cells

293T cells

Primary antibody: TA323441 (BAG5 Antibody) at dilution 1/500

Secondary antibody: Goat anti rabbit IgG at 1/8000 dilution

Exposure time: 1 minute