

## Product datasheet for **TA323440**

### PAK4 Rabbit Polyclonal Antibody

#### Product data:

Product Type:	Primary Antibodies
Applications:	IHC, WB
Recommended Dilution:	ELISA: 1:1000-2000, WB: 1:200-1000, IHC: 1:25-100
Reactivity:	Human, Mouse, Rat
Host:	Rabbit
Isotype:	IgG
Clonality:	Polyclonal
Immunogen:	Fusion protein corresponding to a region derived from 321-572 amino acids of human p21 protein (Cdc42/Rac)-activated kinase 4
Formulation:	PBS pH7.3, 0.05% NaN <sub>3</sub> , 50% glycerol
Concentration:	lot specific
Purification:	Antigen affinity purification
Conjugation:	Unconjugated
Storage:	Store at -20°C as received.
Stability:	Stable for 12 months from date of receipt.
Predicted Protein Size:	64 kDa
Gene Name:	p21 (RAC1) activated kinase 4
Database Link:	<a href="#">NP_001014831</a> <a href="#">Entrez Gene 70584 MouseEntrez Gene 292756 RatEntrez Gene 10298 Human O96013</a>
Background:	PAK proteins; a family of serine/threonine p21-activating kinases; include PAK1; PAK2; PAK3 and PAK4. PAK proteins are critical effectors that link Rho GTPases to cytoskeleton reorganization and nuclear signaling. They serve as targets for the small GTP binding proteins Cdc42 and Rac and have been implicated in a wide range of biological activities. PAK4 interacts specifically with the GTP-bound form of Cdc42Hs and weakly activates the JNK family of MAP kinases. PAK4 is a mediator of filopodia formation and may play a role in the reorganization of the actin cytoskeleton. Multiple alternatively spliced transcript variants encoding distinct isoforms have been found for this gene.



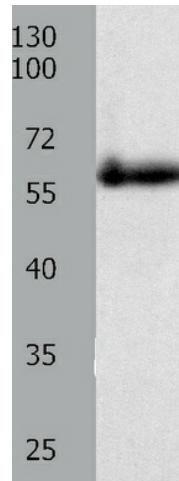
[View online »](#)

**Synonyms:** effector for Cdc42Hs; p21 protein (Cdc42; p21(CDKN1A)-activated kinase 4; p21-activated kinase 4; protein kinase related to *S. cerevisiae* STE20; Rac)-activated kinase 4

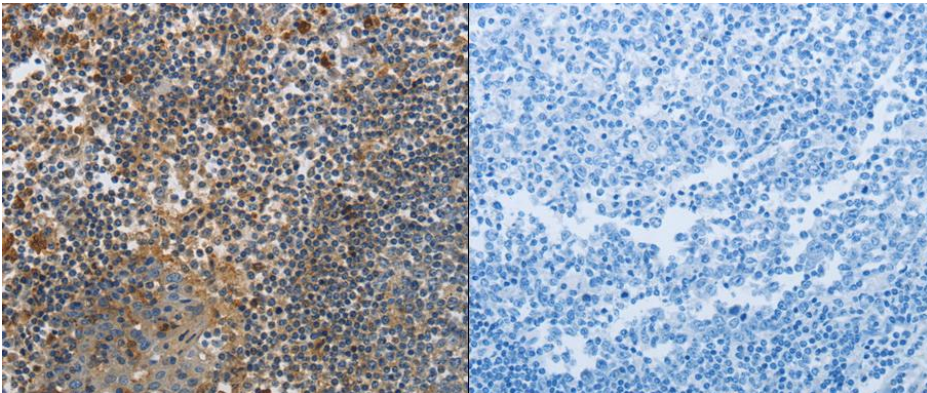
**Protein Families:** Druggable Genome, Protein Kinase

**Protein Pathways:** Axon guidance, ErbB signaling pathway, Focal adhesion, Regulation of actin cytoskeleton, Renal cell carcinoma, T cell receptor signaling pathway

### Product images:



Predicted band size: 64 kDa. Positive control: Human colon cancer tissue lysate. Recommended dilution: 1/200-1000. (Gel: 10%SDS-PAGE Lysate: 40 ug per lane Primary antibody: 1/300 dilution Secondary antibody: Goat anti Rabbit IgG - H&L (HRP) at 1/10000 dilution Exposure time: 2 minutes)



Predicted cell location: Cytoplasm. Positive control: Human tonsil tissue. Recommended dilution: 1/25-100 The image on the left is immunohistochemistry of paraffin-embedded human tonsil tissue using PAK4 antibody at dilution 1/20, on the right is treated with the fusion protein. (Original magnification: x200)