

Product datasheet for **TA323439S**

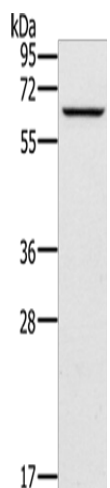
CRMP1 Rabbit Polyclonal Antibody

Product data:

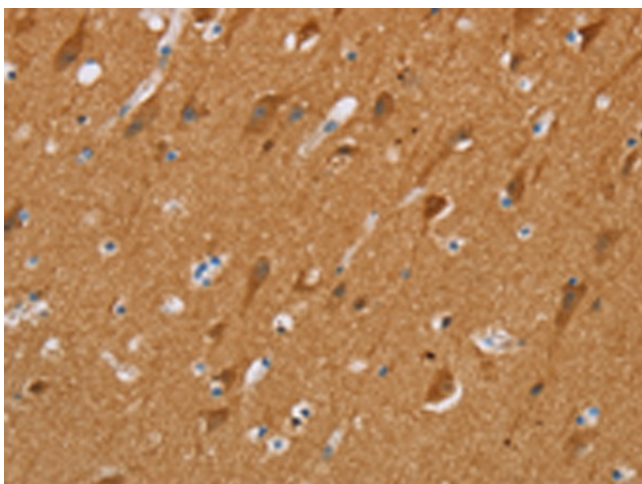
Product Type:	Primary Antibodies
Applications:	IHC, WB
Recommended Dilution:	WB: 1000-5000 WB positive control: Human fetal brain tissue IHC: 25-100 Positive control: Human brain Predicted cell location: Cytoplasm
Reactivity:	Human, Mouse, Rat
Host:	Rabbit
Isotype:	IgG
Clonality:	Polyclonal
Immunogen:	Synthetic peptide corresponding to a region derived from 506-522 amino acids of Human Collapsin response mediator protein 1
Formulation:	PBS pH7.3, 0.05% NaN ₃ , 50% glycerol
Purification:	Antigen affinity purification
Conjugation:	Unconjugated
Storage:	Store at -20°C as received.
Stability:	Stable for 12 months from date of receipt.
Predicted Protein Size:	62 kDa
Gene Name:	collapsin response mediator protein 1
Database Link:	NP_001014809 Entrez Gene 12933 Mouse Entrez Gene 25415 Rat Entrez Gene 1400 Human Q14194
Background:	This gene encodes a member of a family of cytosolic phosphoproteins expressed exclusively in the nervous system. The encoded protein is thought to be a part of the semaphorin signal transduction pathway implicated in semaphorin-induced growth cone collapse during neural development. Alternative splicing results in multiple transcript variants.
Synonyms:	CRMP-1; DPYSL1; DRP-1; DRP1; ULIP-3



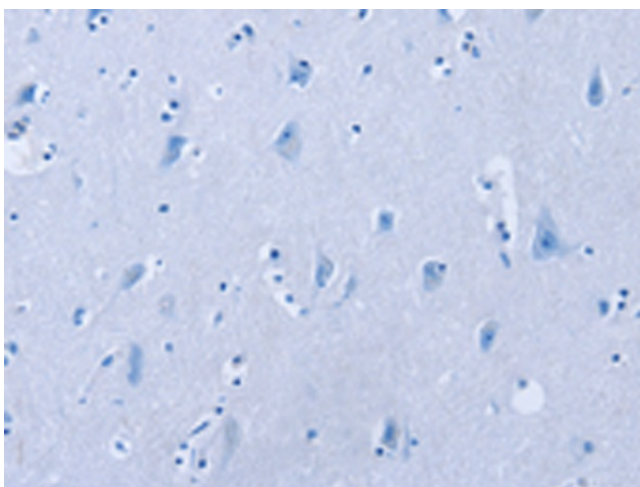
[View online »](#)

Product images:

Gel: 10%SDS-PAGE
Lysate: 30 μ g
Lane: Human fetal brain tissue
Primary antibody: [TA323439] (CRMP1 Antibody)
at dilution 1/250
Secondary antibody: Goat anti rabbit IgG at
1/8000 dilution
Exposure time: 20 seconds



Immunohistochemistry of paraffin-embedded
Human brain tissue using [TA323439] (CRMP1
Antibody) at dilution 1/20 (Original magnification:
 \times 200)



Immunohistochemistry of paraffin-embedded Human brain tissue using [TA323439] (CRMP1 Antibody) at dilution 1/20, treated with synthetic peptide. (Original magnification: $\times 200$)