

Product datasheet for **TA323438**

CRMP1 Rabbit Polyclonal Antibody

Product data:

Product Type:	Primary Antibodies
Applications:	IHC, WB
Recommended Dilution:	WB: 500-2000 WB positive control: Mouse brain tissue IHC: 25-100 Positive control: Human cervical cancer Predicted cell location: Cytoplasm
Reactivity:	Human, Mouse, Rat
Host:	Rabbit
Isotype:	IgG
Clonality:	Polyclonal
Immunogen:	Fusion protein corresponding to C terminal 249 amino acids of human collapsin response mediator protein 1
Formulation:	PBS pH7.3, 0.05% NaN ₃ , 50% glycerol
Concentration:	lot specific
Purification:	Antigen affinity purification
Conjugation:	Unconjugated
Storage:	Store at -20°C as received.
Stability:	Stable for 12 months from date of receipt.
Predicted Protein Size:	62 kDa
Gene Name:	collapsin response mediator protein 1
Database Link:	NP_001014809 Entrez Gene 12933 Mouse Entrez Gene 25415 Rat Entrez Gene 1400 Human Q14194
Background:	This gene encodes a member of a family of cytosolic phosphoproteins expressed exclusively in the nervous system. The encoded protein is thought to be a part of the semaphorin signal transduction pathway implicated in semaphorin-induced growth cone collapse during neural development. Alternative splicing results in multiple transcript variants.



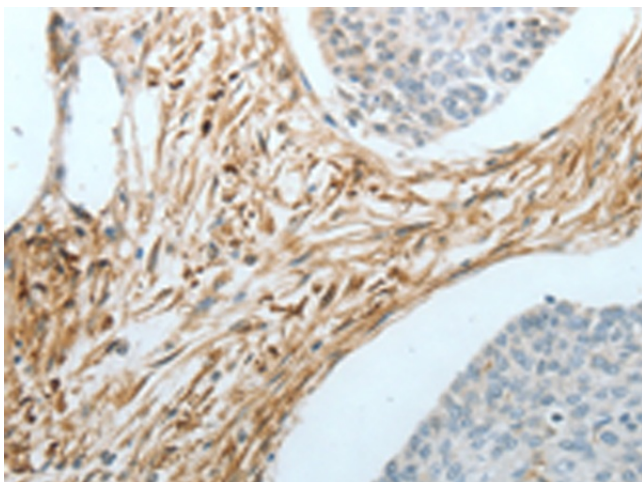
[View online »](#)

Synonyms: CRMP-1; DPYSL1; DRP-1; DRP1; ULIP-3

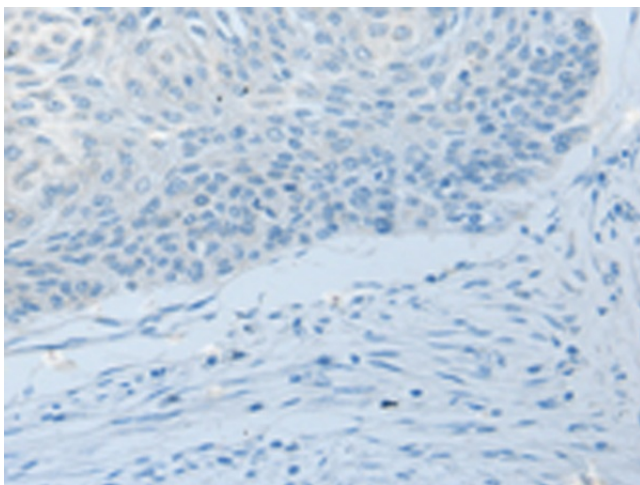
Product images:



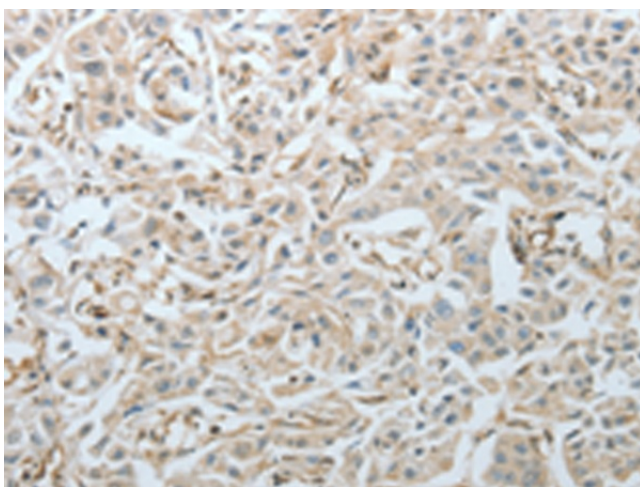
Gel: 10%SDS-PAGE
Lysate: 40 μ g
Lane: Mouse brain tissue
Primary antibody: TA323438 (CRMP1 Antibody) at dilution 1/350
Secondary antibody: Goat anti rabbit IgG at 1/8000 dilution
Exposure time: 2 seconds



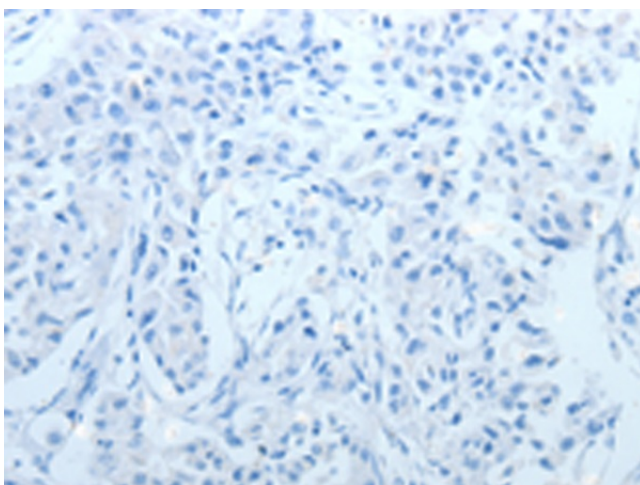
Immunohistochemistry of paraffin-embedded Human cervical cancer tissue using TA323438 (CRMP1 Antibody) at dilution 1/20 (Original magnification: \times 200)



Immunohistochemistry of paraffin-embedded Human cervical cancer tissue using TA323438 (CRMP1 Antibody) at dilution 1/20, treated with fusion protein. (Original magnification: $\times 200$)



Immunohistochemistry of paraffin-embedded Human lung cancer tissue using TA323438 (CRMP1 Antibody) at dilution 1/20 (Original magnification: $\times 200$)



Immunohistochemistry of paraffin-embedded Human lung cancer tissue using TA323438 (CRMP1 Antibody) at dilution 1/20, treated with fusion protein. (Original magnification: $\times 200$)