

Product datasheet for **TA323431**

FOX B2 Rabbit Polyclonal Antibody

Product data:

Product Type:	Primary Antibodies
Applications:	IHC
Recommended Dilution:	IHC: 10-50 Positive control: Human gastric cancer Predicted cell location: Cytoplasm, Nucleus
Reactivity:	Human
Host:	Rabbit
Isotype:	IgG
Clonality:	Polyclonal
Immunogen:	Synthetic peptide corresponding to a region derived from 411-424 amino acids of Human Forkhead box B2
Formulation:	PBS pH7.3, 0.05% NaN ₃ , 50% glycerol
Concentration:	lot specific
Purification:	Antigen affinity purification
Conjugation:	Unconjugated
Storage:	Store at -20°C as received.
Stability:	Stable for 12 months from date of receipt.
Gene Name:	forkhead box B2
Database Link:	NP_001013757 Entrez Gene 442425 Human Q5VYV0



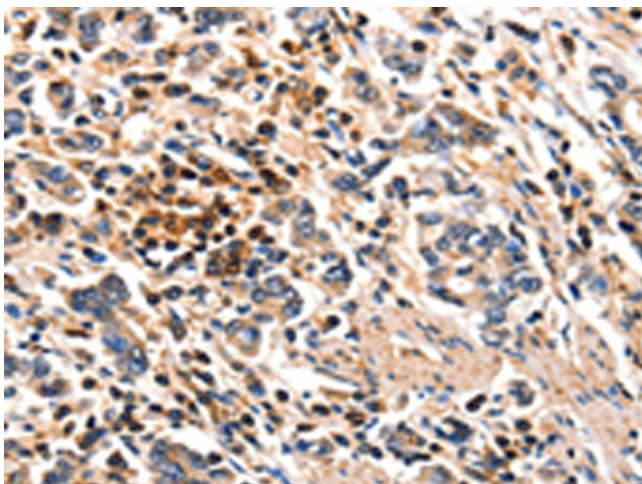
[View online »](#)

Background:

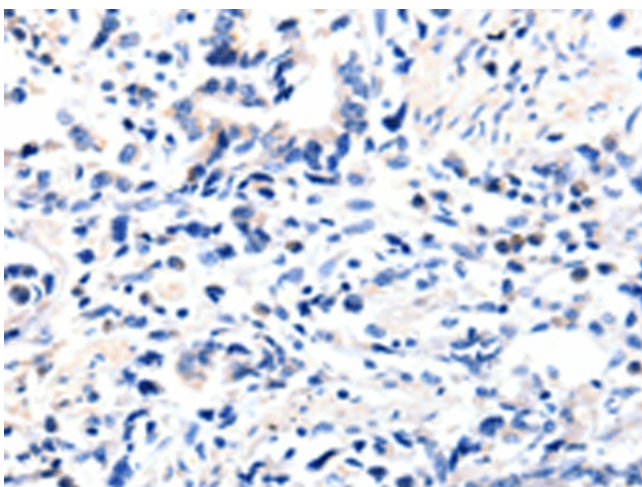
FOX (Forkhead box) proteins are a family of transcription factors that play important roles in regulating the expression of genes involved in cell growth; proliferation; differentiation; and longevity. Many FOX proteins are important to embryonic development. The defining feature of FOX proteins is the forkhead box; a sequence of 80 to 100 amino acids forming a motif that binds to DNA. This forkhead motif is also known as the winged helix due to the butterfly-like appearance of the loops in the protein structure of the domain. Forkhead genes are a subgroup of the helix-turn-helix class of proteins. The FOXF2 gene encodes forkhead box F2; one of many human homologues of the *Drosophila melanogaster* transcription factor forkhead. FOXF2 is expressed in lung and placenta.

Synonyms:

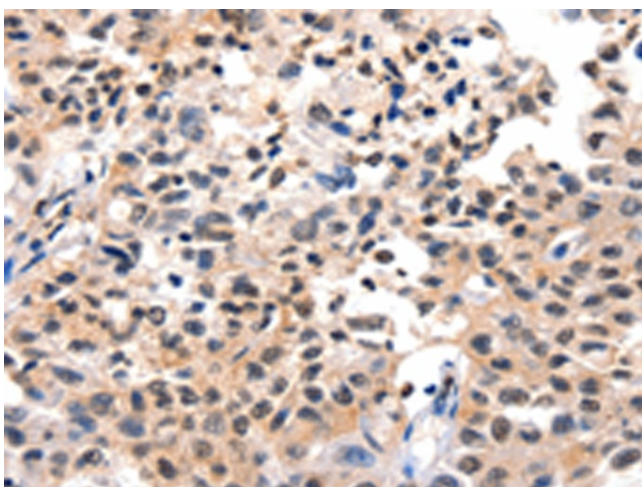
bA159H20.4

Product images:

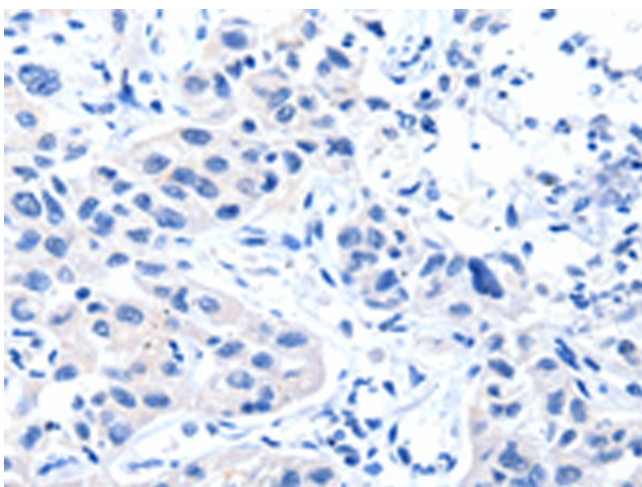
Immunohistochemistry of paraffin-embedded Human gastric cancer tissue using TA323431 (FOXB2 Antibody) at dilution 1/5 (Original magnification: $\times 200$)



Immunohistochemistry of paraffin-embedded Human gastric cancer tissue using TA323431 (FOXB2 Antibody) at dilution 1/5, treated with synthetic peptide. (Original magnification: $\times 200$)



Immunohistochemistry of paraffin-embedded Human lung cancer tissue using TA323431 (FOXB2 Antibody) at dilution 1/5 (Original magnification: $\times 200$)



Immunohistochemistry of paraffin-embedded Human lung cancer tissue using TA323431 (FOXB2 Antibody) at dilution 1/5, treated with synthetic peptide. (Original magnification: $\times 200$)