

## Product datasheet for **TA323429**

### AADACL4 Rabbit Polyclonal Antibody

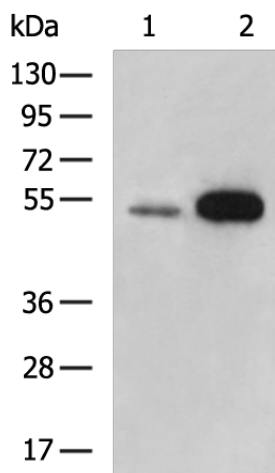
#### Product data:

Product Type:	Primary Antibodies
Applications:	WB
Recommended Dilution:	WB: 200-1000 WB positive control: Human uterus tissue, Mouse testis tissue lysates
Reactivity:	Human, Mouse
Host:	Rabbit
Isotype:	IgG
Clonality:	Polyclonal
Immunogen:	Synthetic peptide corresponding to a region derived from 71-85 amino acids of human arylacetamide deacetylase-like 4
Formulation:	PBS pH7.3, 0.05% NaN <sub>3</sub> , 50% glycerol
Concentration:	lot specific
Purification:	Antigen affinity purification
Conjugation:	Unconjugated
Storage:	Store at -20°C as received.
Stability:	Stable for 12 months from date of receipt.
Predicted Protein Size:	46 kDa
Gene Name:	arylacetamide deacetylase like 4
Database Link:	<a href="#">NP_001013652</a> <a href="#">Entrez Gene 435815 Mouse</a> <a href="#">Entrez Gene 343066 Human</a> <a href="#">Q5VUY2</a>
Background:	Arylacetamide deacetylase-like 4 is a protein in humans that is encoded by the AADACL4 gene. It belongs to the 'GDXG' lipolytic enzyme family. The subcellular location of this protein in the membrane; it is single-pass type II membrane protein. It has signal-anchor; transmembrane and transmembrane helix domain. Function as Hydrolase.
Synonyms:	arylacetamide deacetylase-like 4; OTTHUMP00000001872
Protein Families:	Transmembrane



[View online »](#)

## Product images:



Gel: 8%SDS-PAGE

Lysate: 40  $\mu$ g

Lane 1-2: Human uterus tissue

Mouse testis tissue lysates

Primary antibody: TA323429 (AADACL4 Antibody)  
at dilution 1/250

Secondary antibody: Goat anti rabbit IgG at  
1/5000 dilution

Exposure time: 5 minutes