

## Product datasheet for **TA323427**

### PP2A-beta (PPP2CB) Rabbit Polyclonal Antibody

#### Product data:

Product Type:	Primary Antibodies
Applications:	IHC
Recommended Dilution:	IHC: 100-300 Positive control: Human thyroid cancer Predicted cell location: Cytoplasm
Reactivity:	Human, Mouse, Rat
Host:	Rabbit
Isotype:	IgG
Clonality:	Polyclonal
Immunogen:	Synthetic peptide corresponding to a region derived from 292-306 amino acids of Human protein phosphatase 2, catalytic subunit, beta isozyme
Formulation:	PBS pH7.3, 0.05% NaN <sub>3</sub> , 50% glycerol
Concentration:	lot specific
Purification:	Antigen affinity purification
Conjugation:	Unconjugated
Storage:	Store at -20°C as received.
Stability:	Stable for 12 months from date of receipt.
Gene Name:	protein phosphatase 2 catalytic subunit beta
Database Link:	<a href="#">NP_004147</a> <a href="#">Entrez Gene 19053 Mouse</a> <a href="#">Entrez Gene 24673 Rat</a> <a href="#">Entrez Gene 5516 Human</a> <a href="#">P62714</a>
Background:	This gene encodes the phosphatase 2A catalytic subunit. Protein phosphatase 2A is one of the four major Ser/Thr phosphatases; and it is implicated in the negative control of cell growth and division. It consists of a common heteromeric core enzyme; which is composed of a catalytic subunit and a constant regulatory subunit; that associates with a variety of regulatory subunits. This gene encodes a beta isoform of the catalytic subunit.
Synonyms:	A1115466; beta isoform; catalytic subunit; D8Ertd766e; PP2Ac; PP2CB; protein phosphatase 2 (formerly 2A); protein phosphatase 2a

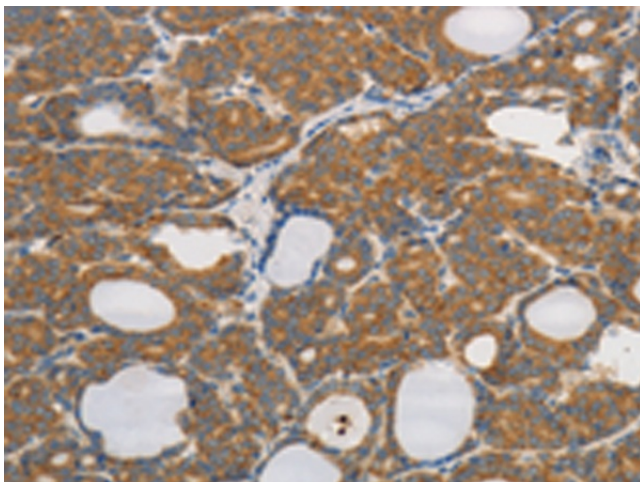


[View online »](#)

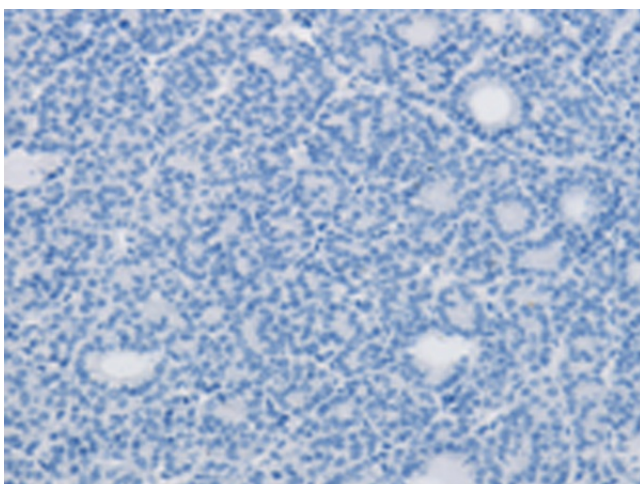
**Protein Families:** Druggable Genome, Phosphatase

**Protein Pathways:** Long-term depression, Oocyte meiosis, TGF-beta signaling pathway, Tight junction, Wnt signaling pathway

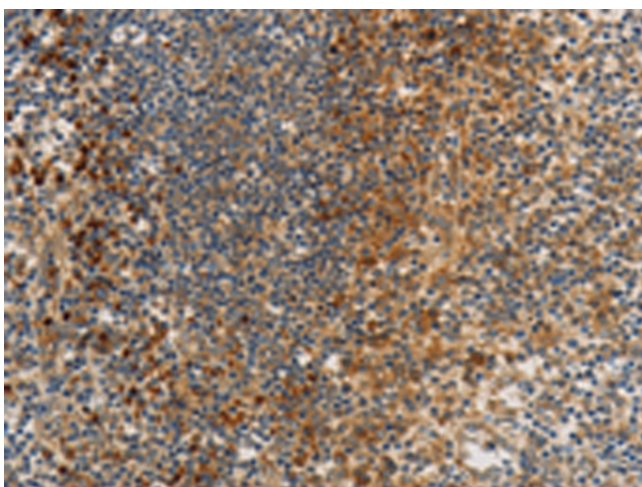
**Product images:**



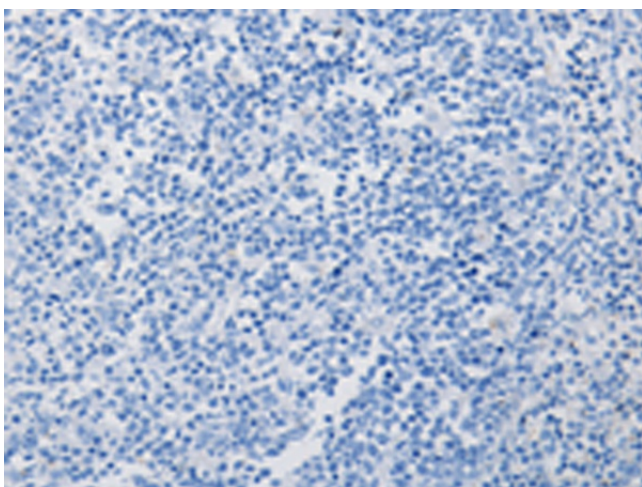
Immunohistochemistry of paraffin-embedded Human thyroid cancer tissue using TA323427 (PPP2CB Antibody) at dilution 1/80 (Original magnification:  $\times 200$ )



Immunohistochemistry of paraffin-embedded Human thyroid cancer tissue using TA323427 (PPP2CB Antibody) at dilution 1/80, treated with synthetic peptide. (Original magnification:  $\times 200$ )



Immunohistochemistry of paraffin-embedded Human tonsil tissue using TA323427 (PPP2CB Antibody) at dilution 1/80 (Original magnification: ×200)



Immunohistochemistry of paraffin-embedded Human tonsil tissue using TA323427 (PPP2CB Antibody) at dilution 1/80, treated with synthetic peptide. (Original magnification: ×200)