

Product datasheet for **TA323426**

PP2A-beta (PPP2CB) Rabbit Polyclonal Antibody

Product data:

Product Type:	Primary Antibodies
Applications:	IHC, WB
Recommended Dilution:	WB: 1000-5000 WB positive control: Jurkat cells IHC: 50-200 Positive control: Human breast cancer Predicted cell location: Cytoplasm
Reactivity:	Human, Mouse, Rat
Host:	Rabbit
Isotype:	IgG
Clonality:	Polyclonal
Immunogen:	Synthetic peptide corresponding to a region derived from 292-306 amino acids of Human protein phosphatase 2, catalytic subunit, beta isozyme
Formulation:	PBS pH7.3, 0.05% NaN ₃ , 50% glycerol
Concentration:	lot specific
Purification:	Antigen affinity purification
Conjugation:	Unconjugated
Storage:	Store at -20°C as received.
Stability:	Stable for 12 months from date of receipt.
Predicted Protein Size:	36 kDa
Gene Name:	protein phosphatase 2 catalytic subunit beta
Database Link:	NP_001009552 Entrez Gene 19053 Mouse Entrez Gene 24673 Rat Entrez Gene 5516 Human P62714

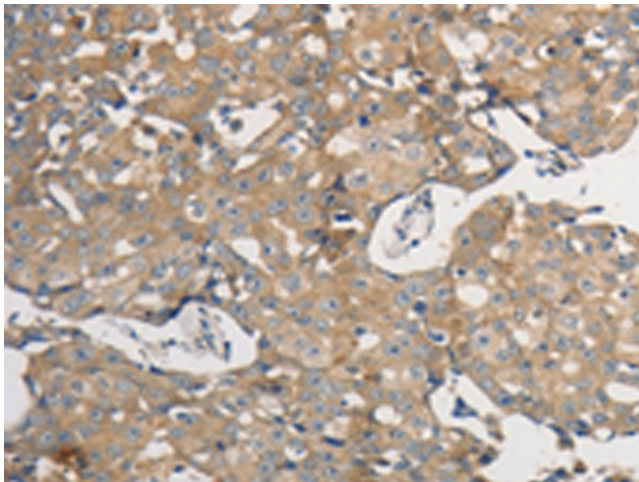


[View online »](#)

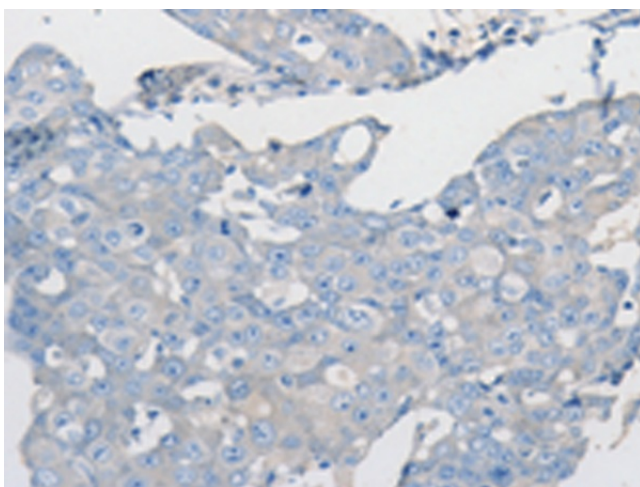
Background:	This gene encodes the phosphatase 2A catalytic subunit. Protein phosphatase 2A is one of the four major Ser/Thr phosphatases; and it is implicated in the negative control of cell growth and division. It consists of a common heteromeric core enzyme; which is composed of a catalytic subunit and a constant regulatory subunit; that associates with a variety of regulatory subunits. This gene encodes a beta isoform of the catalytic subunit.
Synonyms:	PP2Abeta; PP2CB
Protein Families:	Druggable Genome, Phosphatase
Protein Pathways:	Long-term depression, Oocyte meiosis, TGF-beta signaling pathway, Tight junction, Wnt signaling pathway

Product images:

Gel: 12%SDS-PAGE
Lysate: 40 µg
Lane: Jurkat cells
Primary antibody: TA323426 (PPP2CB Antibody)
at dilution 1/1200
Secondary antibody: Goat anti rabbit IgG at
1/8000 dilution
Exposure time: 1 minute



Immunohistochemistry of paraffin-embedded
Human breast cancer tissue using TA323426
(PPP2CB Antibody) at dilution 1/50 (Original
magnification: ×200)



Immunohistochemistry of paraffin-embedded Human breast cancer tissue using TA323426 (PPP2CB Antibody) at dilution 1/50, treated with synthetic peptide. (Original magnification: ×200)