

## Product datasheet for **TA323424S**

### SPIN4 Rabbit Polyclonal Antibody

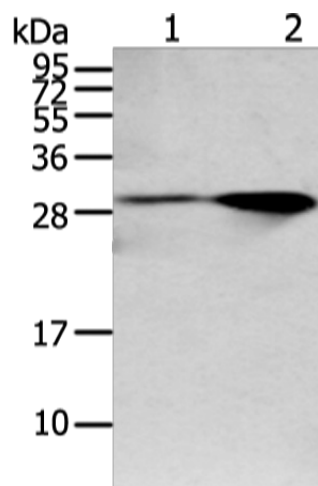
#### Product data:

Product Type:	Primary Antibodies
Applications:	IHC, WB
Recommended Dilution:	WB: 200-1000 WB positive control: Mouse brain and human fetal brain tissue IHC: 25-100 Positive control: Human colon cancer Predicted cell location: Cytoplasm
Reactivity:	Human, Mouse
Host:	Rabbit
Isotype:	IgG
Clonality:	Polyclonal
Immunogen:	Full length fusion protein
Formulation:	PBS pH7.3, 0.05% NaN <sub>3</sub> , 50% glycerol
Purification:	Antigen affinity purification
Conjugation:	Unconjugated
Storage:	Store at -20°C as received.
Stability:	Stable for 12 months from date of receipt.
Gene Name:	spindlin family member 4
Database Link:	<a href="#">NP_001012986</a> <a href="#">Entrez Gene 270624 Mouse</a> <a href="#">Entrez Gene 139886 Human</a> <a href="#">Q56A73</a>
Background:	This gene is a member of the SPINDLIN family. SPINDLIN was first reported as an abundant maternal transcript present in the unfertilized egg and 2-cell; but not the 8-cell; stage embryo during the transition from oocyte to embryo in the mouse. This family is involved in gametogenesis; and the expression of genes in this family can be detected in early embryos.
Synonyms:	TDRD28



[View online »](#)

## Product images:



Gel: 12%SDS-PAGE

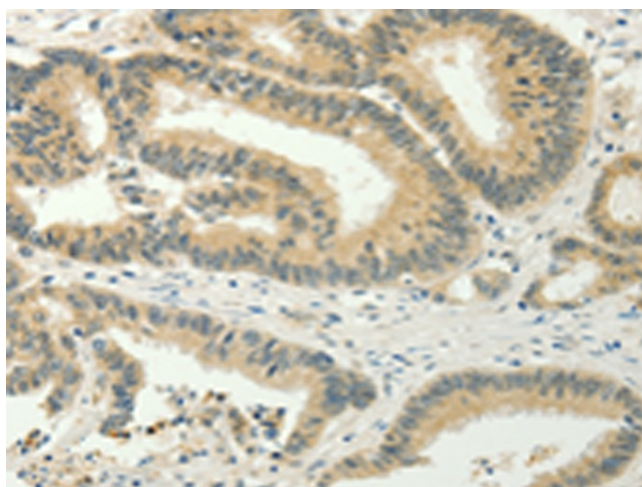
Lysate: 40  $\mu$ g

Lane 1-2: Mouse brain and human fetal brain tissue

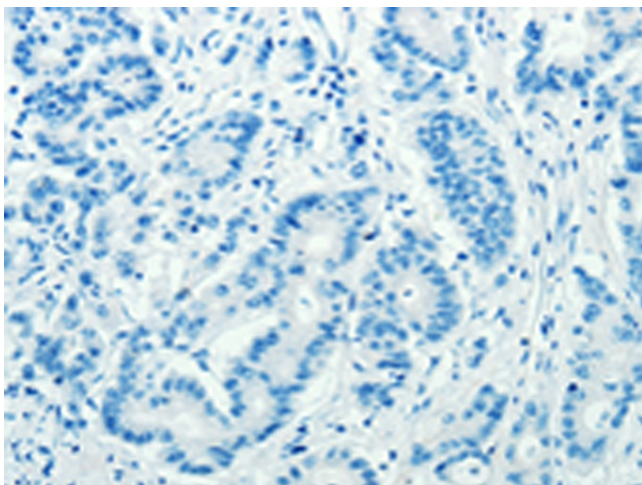
Primary antibody: [TA323424] (SPIN4 Antibody) at dilution 1/200

Secondary antibody: Goat anti rabbit IgG at 1/8000 dilution

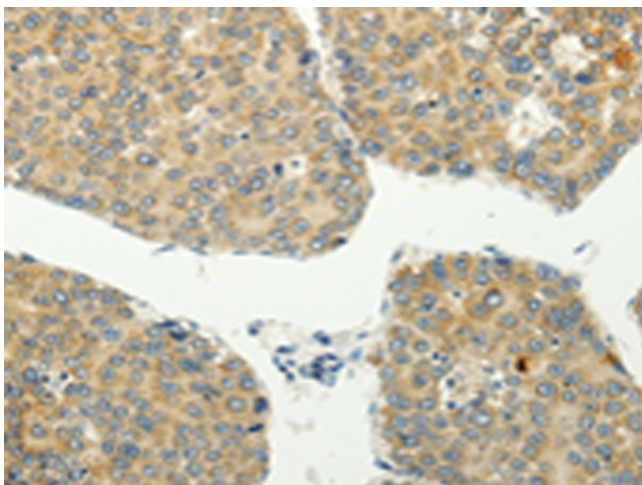
Exposure time: 1 minute



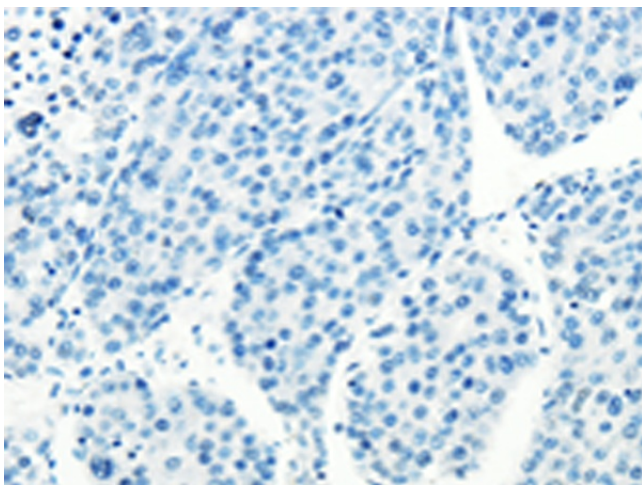
Immunohistochemistry of paraffin-embedded Human colon cancer tissue using [TA323424] (SPIN4 Antibody) at dilution 1/20 (Original magnification:  $\times 200$ )



Immunohistochemistry of paraffin-embedded Human colon cancer tissue using [TA323424] (SPIN4 Antibody) at dilution 1/20, treated with fusion protein. (Original magnification:  $\times 200$ )



Immunohistochemistry of paraffin-embedded Human liver cancer tissue using [TA323424] (SPIN4 Antibody) at dilution 1/20 (Original magnification:  $\times 200$ )



Immunohistochemistry of paraffin-embedded Human liver cancer tissue using [TA323424] (SPIN4 Antibody) at dilution 1/20, treated with fusion protein. (Original magnification:  $\times 200$ )