

## Product datasheet for **TA323423**

### AGPAT2 Rabbit Polyclonal Antibody

#### Product data:

Product Type:	Primary Antibodies
Applications:	WB
Recommended Dilution:	WB: 500-2000 WB positive control: Human fetal liver cancer tissue
Reactivity:	Human
Host:	Rabbit
Isotype:	IgG
Clonality:	Polyclonal
Immunogen:	Synthetic peptide corresponding to a region derived from 244-278 amino acids of human 1-acylglycerol-3-phosphate O-acyltransferase 2
Formulation:	PBS pH7.3, 0.05% NaN <sub>3</sub> , 50% glycerol
Concentration:	lot specific
Purification:	Antigen affinity purification
Conjugation:	Unconjugated
Storage:	Store at -20°C as received.
Stability:	Stable for 12 months from date of receipt.
Predicted Protein Size:	27 kDa
Gene Name:	1-acylglycerol-3-phosphate O-acyltransferase 2
Database Link:	<a href="#">NP_001012745</a> <a href="#">Entrez Gene 10555 Human</a> <a href="#">O15120</a>

**Background:** This gene encodes a member of the 1-acylglycerol-3-phosphate O-acyltransferase family. The protein is located within the endoplasmic reticulum membrane and converts lysophosphatidic acid to phosphatidic acid; the second step in de novo phospholipid biosynthesis. Mutations in this gene have been associated with congenital generalized lipodystrophy (CGL); or Berardinelli-Seip syndrome; a disease characterized by a near absence of adipose tissue and severe insulin resistance. Alternate transcriptional splice variants; encoding different isoforms; have been characterized.



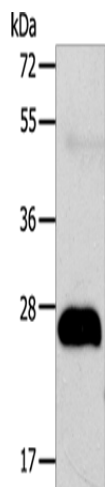
[View online »](#)

**Synonyms:** 1-AGPAT2; BSCL; BSCL1; LPAAB; LPAAT-beta

**Protein Families:** Transmembrane

**Protein Pathways:** Ether lipid metabolism, Glycerolipid metabolism, Glycerophospholipid metabolism, Metabolic pathways

### Product images:



Gel: 12%SDS-PAGE  
Lysate: 40 µg  
Lane: Human fetal liver cancer tissue  
Primary antibody: TA323423 (AGPAT2 Antibody)  
at dilution 1/400  
Secondary antibody: Goat anti rabbit IgG at  
1/8000 dilution  
Exposure time: 30 seconds