

## Product datasheet for **TA323422**

### SIRT3 Rabbit Polyclonal Antibody

#### Product data:

Product Type:	Primary Antibodies
Applications:	IHC, WB
Recommended Dilution:	WB: 1000-5000 WB positive control: Mouse brain tissue lysate IHC: 50-200 Positive control: Human gastric cancer Predicted cell location: Cytoplasm
Reactivity:	Human, Mouse
Host:	Rabbit
Isotype:	IgG
Clonality:	Polyclonal
Immunogen:	Fusion protein corresponding to a region derived from 126-382 amino acids of human sirtuin 3
Formulation:	PBS pH7.3, 0.05% NaN <sub>3</sub> , 50% glycerol
Concentration:	lot specific
Purification:	Antigen affinity purification
Conjugation:	Unconjugated
Storage:	Store at -20°C as received.
Stability:	Stable for 12 months from date of receipt.
Predicted Protein Size:	44 kDa
Gene Name:	sirtuin 3
Database Link:	<a href="#">NP_001017524</a> <a href="#">Entrez Gene 64384 Mouse</a> <a href="#">Entrez Gene 23410 Human</a> <a href="#">Q9NTG7</a>



[View online »](#)

**Background:**

This gene encodes a member of the sirtuin family of proteins; homologs to the yeast Sir2 protein. Members of the sirtuin family are characterized by a sirtuin core domain and grouped into four classes. The functions of human sirtuins have not yet been determined; however; yeast sirtuin proteins are known to regulate epigenetic gene silencing and suppress recombination of rDNA. Studies suggest that the human sirtuins may function as intracellular regulatory proteins with mono-ADP-ribosyltransferase activity. The protein encoded by this gene is included in class I of the sirtuin family. Two alternatively spliced transcript variants that encode different proteins have been described for this gene.

**Synonyms:**

SIR2L3

**Protein Families:**

Druggable Genome, Transcription Factors

**Product images:**

kDa

130—

95—

72—

55—

36—

28—

17—



Gel: 8%SDS-PAGE

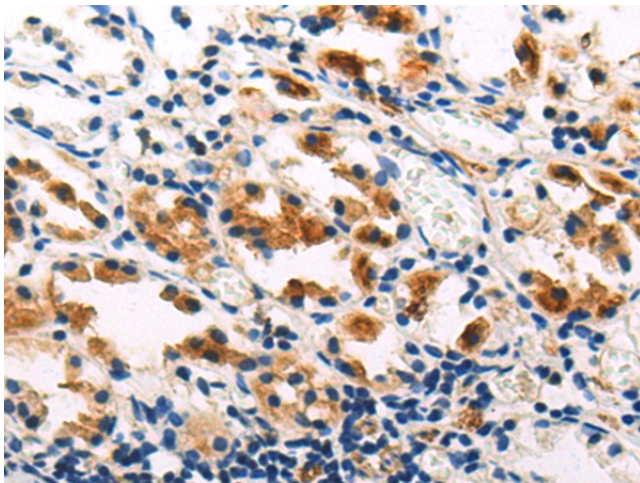
Lysate: 40 µg

Lane: Mouse brain tissue lysate

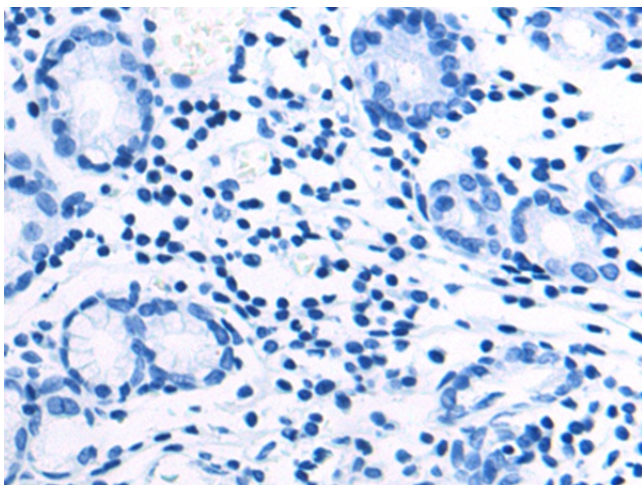
Primary antibody: TA323422 (SIRT3 Antibody) at dilution 1/1000

Secondary antibody: Goat anti rabbit IgG at 1/5000 dilution

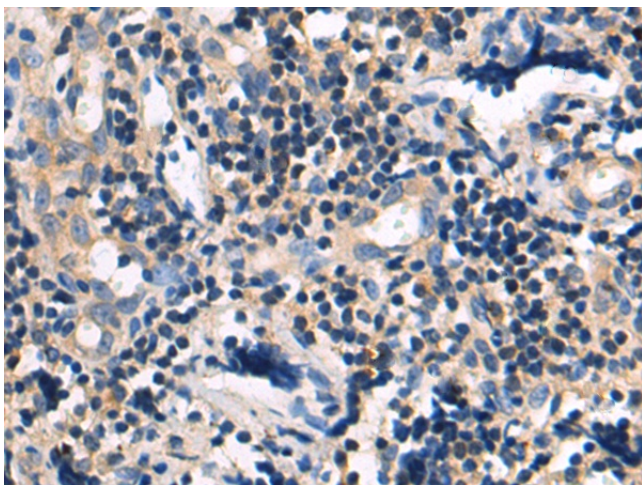
Exposure time: 30 seconds



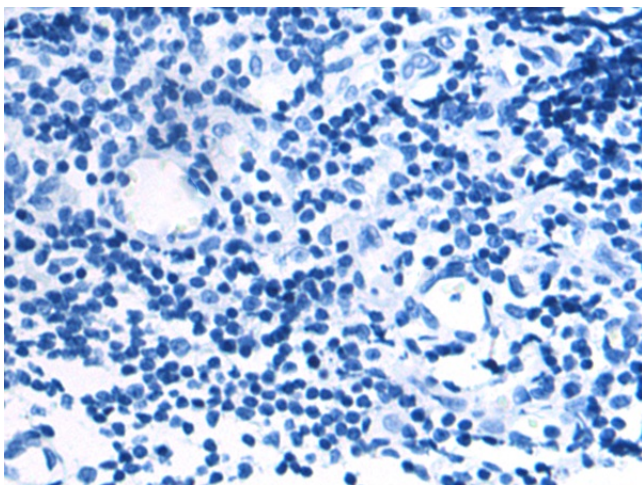
Immunohistochemistry of paraffin-embedded Human gastric cancer tissue using TA323422 (SIRT3 Antibody) at dilution 1/60 (Original magnification: ×200)



Immunohistochemistry of paraffin-embedded Human gastric cancer tissue using TA323422 (SIRT3 Antibody) at dilution 1/60, treated with fusion protein. (Original magnification: x200)



Immunohistochemistry of paraffin-embedded Human tonsil tissue using TA323422 (SIRT3 Antibody) at dilution 1/60 (Original magnification: x200)



Immunohistochemistry of paraffin-embedded Human tonsil tissue using TA323422 (SIRT3 Antibody) at dilution 1/60, treated with fusion protein. (Original magnification: x200)