

## Product datasheet for **TA323421S**

### SIRT3 Rabbit Polyclonal Antibody

#### Product data:

Product Type:	Primary Antibodies
Applications:	IHC
Recommended Dilution:	IHC: 50-200 Positive control: Human liver cancer Predicted cell location: Cytoplasm
Reactivity:	Human, Mouse
Host:	Rabbit
Isotype:	IgG
Clonality:	Polyclonal
Immunogen:	Fusion protein corresponding to a region derived from 126-382 amino acids of human sirtuin 3
Formulation:	PBS pH7.3, 0.05% NaN <sub>3</sub> , 50% glycerol
Purification:	Antigen affinity purification
Conjugation:	Unconjugated
Storage:	Store at -20°C as received.
Stability:	Stable for 12 months from date of receipt.
Gene Name:	sirtuin 3
Database Link:	<a href="#">NP_036371</a> <a href="#">Entrez Gene 64384 Mouse</a> <a href="#">Entrez Gene 23410 Human</a> <a href="#">Q9NTG7</a>

**Background:** This gene encodes a member of the sirtuin family of proteins; homologs to the yeast Sir2 protein. Members of the sirtuin family are characterized by a sirtuin core domain and grouped into four classes. The functions of human sirtuins have not yet been determined; however; yeast sirtuin proteins are known to regulate epigenetic gene silencing and suppress recombination of rDNA. Studies suggest that the human sirtuins may function as intracellular regulatory proteins with mono-ADP-ribosyltransferase activity. The protein encoded by this gene is included in class I of the sirtuin family. Two alternatively spliced transcript variants that encode different proteins have been described for this gene.

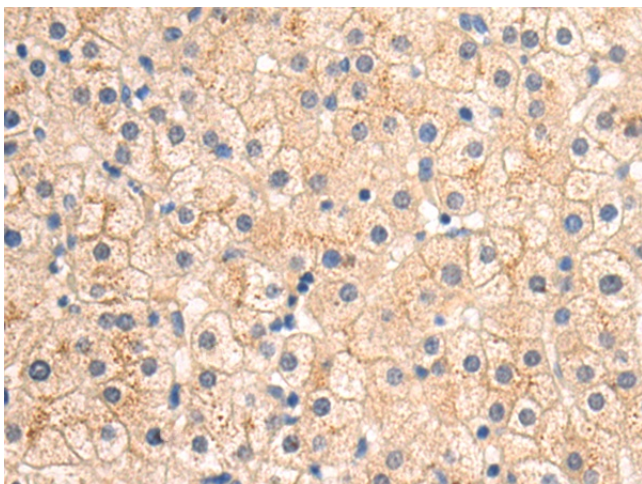


[View online »](#)

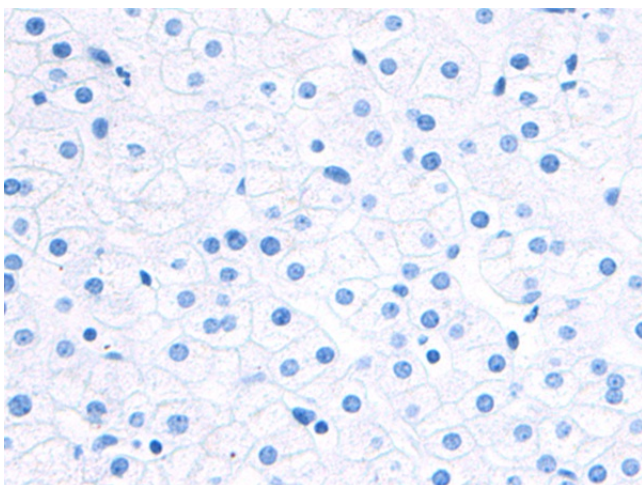
Synonyms: SIR2L3

Protein Families: Druggable Genome, Transcription Factors

### Product images:



Immunohistochemistry of paraffin-embedded Human liver cancer tissue using [TA323421] (SIRT3 Antibody) at dilution 1/80 (Original magnification: ×200)



Immunohistochemistry of paraffin-embedded Human liver cancer tissue using [TA323421] (SIRT3 Antibody) at dilution 1/80, treated with fusion protein. (Original magnification: ×200)