

Product datasheet for **TA323420**

PGBD2 Rabbit Polyclonal Antibody

Product data:

Product Type:	Primary Antibodies
Applications:	WB
Recommended Dilution:	WB: 500-2000 WB positive control: Human liver cancer tissue
Reactivity:	Human
Host:	Rabbit
Isotype:	IgG
Clonality:	Polyclonal
Immunogen:	Fusion protein corresponding to C terminal 250 amino acids of human piggyBac transposable element derived 2
Formulation:	PBS pH7.3, 0.05% NaN ₃ , 50% glycerol
Concentration:	lot specific
Purification:	Antigen affinity purification
Conjugation:	Unconjugated
Storage:	Store at -20°C as received.
Stability:	Stable for 12 months from date of receipt.
Predicted Protein Size:	68 kDa
Gene Name:	piggyBac transposable element derived 2
Database Link:	NP_001017434 Entrez Gene 267002 Human Q6P3X8



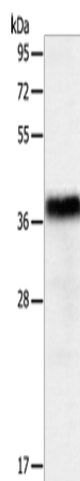
[View online »](#)

Background:

The piggyBac family of proteins; found in diverse animals; are transposases related to the transposase of the canonical piggyBac transposon from the moth; *Trichoplusia ni*. This family also includes genes in several genomes; including human; that appear to have been derived from the piggyBac transposons. This gene belongs to the subfamily of piggyBac transposable element derived (PGBD) genes. The PGBD proteins appear to be novel; with no obvious relationship to other transposases; or other known protein families. The exact function of this gene is not known. Two transcript variants encoding different isoforms have been found for this gene.

Synonyms:

PGBD2

Product images:


Gel: 10%SDS-PAGE
 Lysate: 40 µg
 Lane: Human liver cancer tissue
 Primary antibody: TA323420 (PGBD2 Antibody) at dilution 1/550
 Secondary antibody: Goat anti rabbit IgG at 1/8000 dilution
 Exposure time: 10 seconds