

Product datasheet for **TA323414**

ABCF1 Rabbit Polyclonal Antibody

Product data:

Product Type:	Primary Antibodies
Applications:	IHC
Recommended Dilution:	IHC: 50-200 Positive control: Human cervical cancer Predicted cell location: Cytoplasm
Reactivity:	Human, Mouse, Rat
Host:	Rabbit
Isotype:	IgG
Clonality:	Polyclonal
Immunogen:	Fusion protein corresponding to a region derived from 625-840 amino acids of human ATP-binding cassette, sub-family F (GCN20), member 1
Formulation:	PBS pH7.3, 0.05% NaN ₃ , 50% glycerol
Concentration:	lot specific
Purification:	Antigen affinity purification
Conjugation:	Unconjugated
Storage:	Store at -20°C as received.
Stability:	Stable for 12 months from date of receipt.
Gene Name:	ATP binding cassette subfamily F member 1
Database Link:	NP_001081 Entrez Gene 85493 Rat Entrez Gene 224742 Mouse Entrez Gene 23 Human Q8NE71



[View online »](#)

Background:

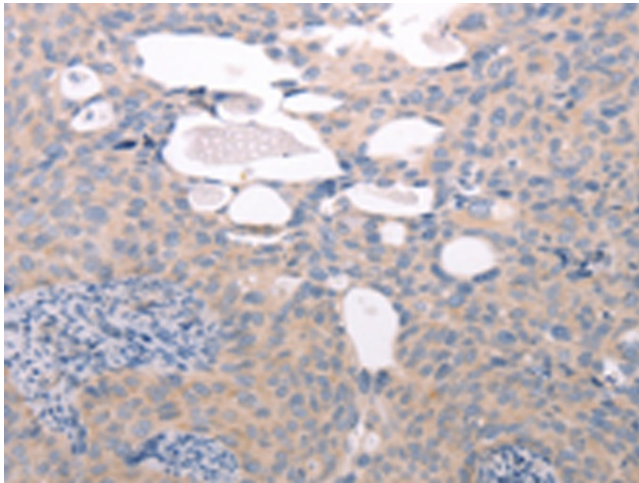
The protein encoded by this gene is a member of the superfamily of ATP-binding cassette (ABC) transporters. ABC proteins transport various molecules across extra- and intra-cellular membranes. ABC genes are divided into seven distinct subfamilies (ABC1; MDR/TAP; MRP; ALD; OABP; GCN20; White). This protein is a member of the GCN20 subfamily. Unlike other members of the superfamily; this protein lacks the transmembrane domains which are characteristic of most ABC transporters. This protein may be regulated by tumor necrosis factor-alpha and play a role in enhancement of protein synthesis and the inflammation process.

Synonyms:

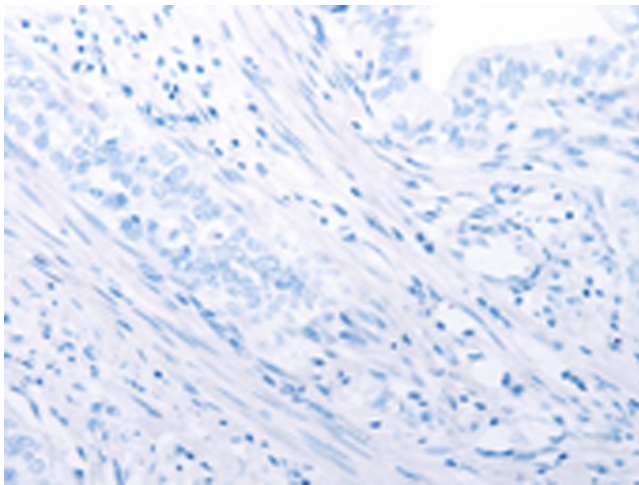
ABC27; ABC50

Protein Families:

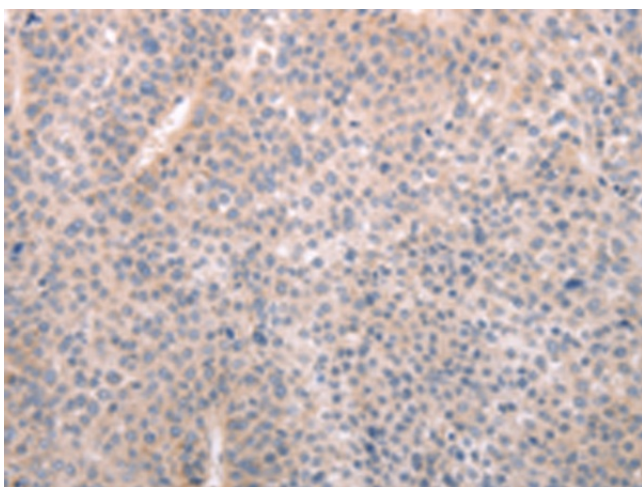
Druggable Genome

Product images:

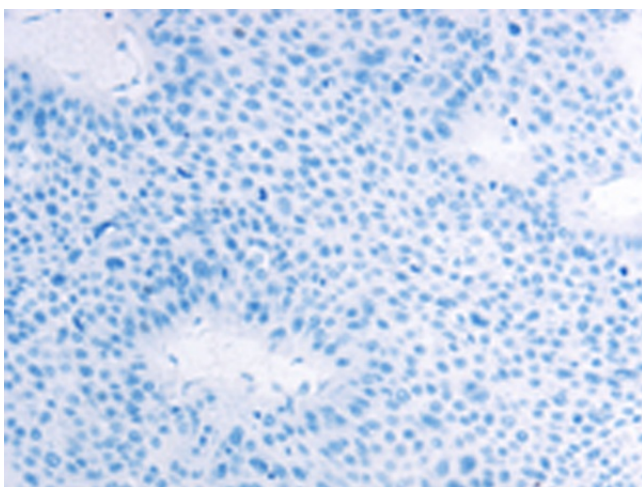
Immunohistochemistry of paraffin-embedded Human cervical cancer tissue using TA323414 (ABCF1 Antibody) at dilution 1/40 (Original magnification: $\times 200$)



Immunohistochemistry of paraffin-embedded Human cervical cancer tissue using TA323414 (ABCF1 Antibody) at dilution 1/40, treated with fusion protein. (Original magnification: $\times 200$)



Immunohistochemistry of paraffin-embedded Human liver cancer tissue using TA323414 (ABCF1 Antibody) at dilution 1/40 (Original magnification: $\times 200$)



Immunohistochemistry of paraffin-embedded Human liver cancer tissue using TA323414 (ABCF1 Antibody) at dilution 1/40, treated with fusion protein. (Original magnification: $\times 200$)