

## Product datasheet for **TA323409S**

### APLP1 Rabbit Polyclonal Antibody

#### Product data:

Product Type:	Primary Antibodies
Applications:	IHC, WB
Recommended Dilution:	WB: 500-2000 WB positive control: Human fetal brain tissue IHC: 10-50 Positive control: Human breast cancer Predicted cell location: Cytoplasm
Reactivity:	Human, Mouse
Host:	Rabbit
Isotype:	IgG
Clonality:	Polyclonal
Immunogen:	Fusion protein corresponding to a region derived from 56-342 of Human Amyloid beta (A4) precursor-like protein 1
Formulation:	PBS pH7.3, 0.05% NaN <sub>3</sub> , 50% glycerol
Purification:	Antigen affinity purification
Conjugation:	Unconjugated
Storage:	Store at -20°C as received.
Stability:	Stable for 12 months from date of receipt.
Predicted Protein Size:	72 kDa
Gene Name:	amyloid beta precursor like protein 1
Database Link:	<a href="#">NP_001019978</a> <a href="#">Entrez Gene 11803 Mouse</a> <a href="#">Entrez Gene 333 Human</a> <a href="#">P51693</a>



[View online »](#)

**Background:**

This gene encodes a member of the highly conserved amyloid precursor protein gene family. The encoded protein is a membrane-associated glycoprotein that is cleaved by secretases in a manner similar to amyloid beta A4 precursor protein cleavage. This cleavage liberates an intracellular cytoplasmic fragment that may act as a transcriptional activator. The encoded protein may also play a role in synaptic maturation during cortical development. Alternatively spliced transcript variants encoding different isoforms have been described.

**Synonyms:**

APLP

**Protein Families:**

Druggable Genome, Transmembrane

**Product images:**

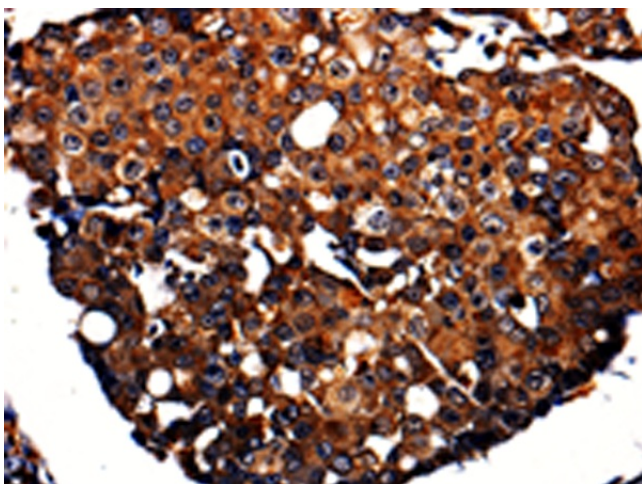
Gel: 8%SDS-PAGE

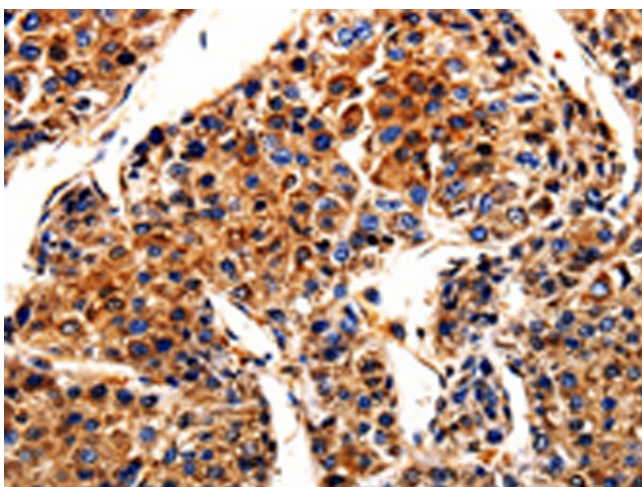
Lysate: 40 µg

Lane: Human fetal brain tissue

Primary antibody: [TA323409] (APLP1 Antibody)  
at dilution 1/650Secondary antibody: Goat anti rabbit IgG at  
1/8000 dilution

Exposure time: 10 seconds

Immunohistochemistry of paraffin-embedded  
Human breast cancer tissue using [TA323409]  
(APLP1 Antibody) at dilution 1/10. (Original  
magnification: ×200)



Immunohistochemistry of paraffin-embedded Human liver cancer tissue using [TA323409] (APLP1 Antibody) at dilution 1/10. (Original magnification: ×200)