

Product datasheet for **TA323409**

APLP1 Rabbit Polyclonal Antibody

Product data:

Product Type:	Primary Antibodies
Applications:	IHC, WB
Recommended Dilution:	WB: 500-2000 WB positive control: Human fetal brain tissue IHC: 10-50 Positive control: Human breast cancer Predicted cell location: Cytoplasm
Reactivity:	Human, Mouse
Host:	Rabbit
Isotype:	IgG
Clonality:	Polyclonal
Immunogen:	Fusion protein corresponding to a region derived from 56-342 of Human Amyloid beta (A4) precursor-like protein 1
Formulation:	PBS pH7.3, 0.05% NaN ₃ , 50% glycerol
Concentration:	lot specific
Purification:	Antigen affinity purification
Conjugation:	Unconjugated
Storage:	Store at -20°C as received.
Stability:	Stable for 12 months from date of receipt.
Predicted Protein Size:	72 kDa
Gene Name:	amyloid beta precursor like protein 1
Database Link:	NP_001019978 Entrez Gene 11803 Mouse Entrez Gene 333 Human P51693



[View online »](#)

Background:

This gene encodes a member of the highly conserved amyloid precursor protein gene family. The encoded protein is a membrane-associated glycoprotein that is cleaved by secretases in a manner similar to amyloid beta A4 precursor protein cleavage. This cleavage liberates an intracellular cytoplasmic fragment that may act as a transcriptional activator. The encoded protein may also play a role in synaptic maturation during cortical development. Alternatively spliced transcript variants encoding different isoforms have been described.

Synonyms:

APLP

Protein Families:

Druggable Genome, Transmembrane

Product images:

Gel: 8%SDS-PAGE

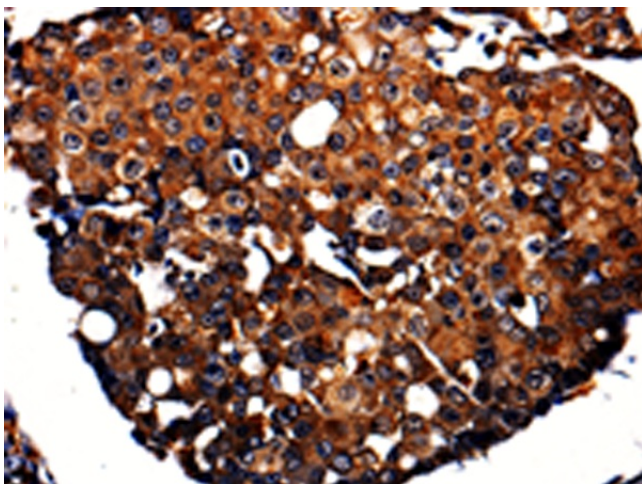
Lysate: 40 µg

Lane: Human fetal brain tissue

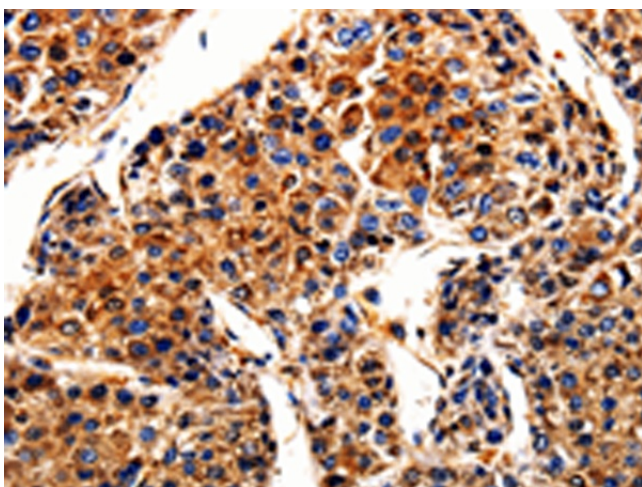
Primary antibody: TA323409 (APLP1 Antibody) at dilution 1/650

Secondary antibody: Goat anti rabbit IgG at 1/8000 dilution

Exposure time: 10 seconds



Immunohistochemistry of paraffin-embedded Human breast cancer tissue using TA323409 (APLP1 Antibody) at dilution 1/10. (Original magnification: ×200)



Immunohistochemistry of paraffin-embedded Human liver cancer tissue using TA323409 (APLP1 Antibody) at dilution 1/10. (Original magnification: $\times 200$)