

Product datasheet for **TA323407S**

Neuropilin 1 (NRP1) Rabbit Polyclonal Antibody

Product data:

Product Type:	Primary Antibodies
Applications:	IHC
Recommended Dilution:	IHC: 25-100 Positive control: Human esophagus cancer Predicted cell location: cytoplasm, Cell membrane
Reactivity:	Human, Mouse, Rat
Host:	Rabbit
Isotype:	IgG
Clonality:	Polyclonal
Immunogen:	Fusion protein corresponding to C terminal 300 amino acids of human neuropilin 1
Formulation:	PBS pH7.3, 0.05% NaN ₃ , 50% glycerol
Purification:	Antigen affinity purification
Conjugation:	Unconjugated
Storage:	Store at -20°C as received.
Stability:	Stable for 12 months from date of receipt.
Gene Name:	neuropilin 1
Database Link:	NP_003864 Entrez Gene 18186 Mouse Entrez Gene 246331 Rat Entrez Gene 8829 Human O14786

Background: This gene encodes one of two neuropilins; which contain specific protein domains which allow them to participate in several different types of signaling pathways that control cell migration. Neuropilins contain a large N-terminal extracellular domain; made up of complement-binding; coagulation factor V/VIII; and meprin domains. These proteins also contains a short membrane-spanning domain and a small cytoplasmic domain. Neuropilins bind many ligands and various types of co-receptors; they affect cell survival; migration; and attraction. Some of the ligands and co-receptors bound by neuropilins are vascular endothelial growth factor (VEGF) and semaphorin family members. Several alternatively spliced transcript variants that encode different protein isoforms have been described for this gene.



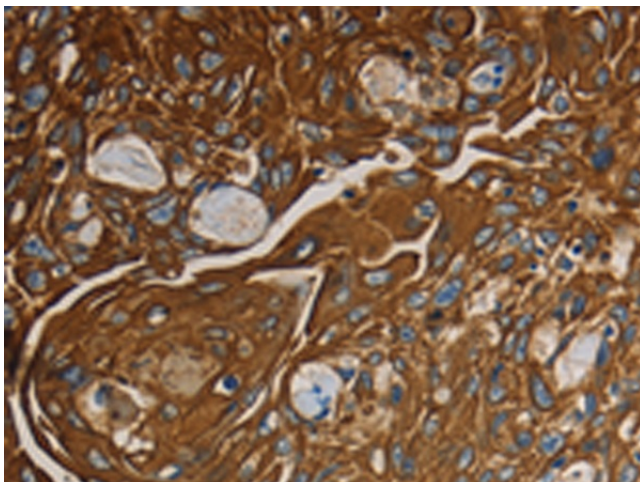
[View online »](#)

Synonyms: BDCA4; CD304; NP1; NRP; VEGF165R

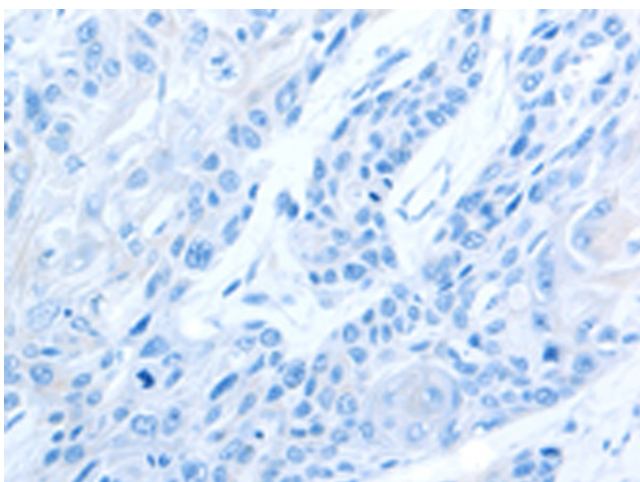
Protein Families: Druggable Genome, Secreted Protein, Transmembrane

Protein Pathways: Axon guidance

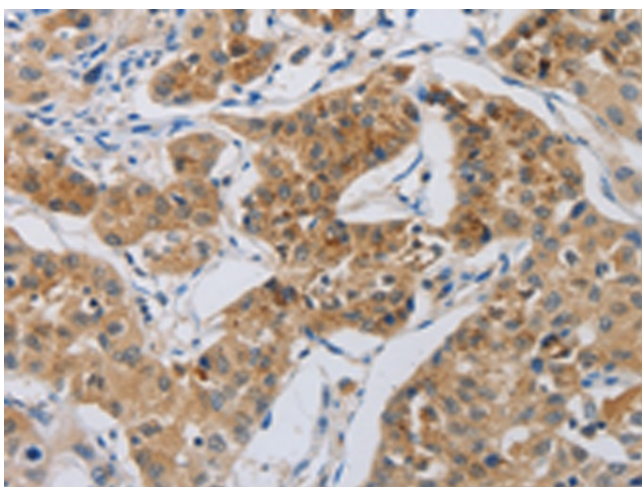
Product images:



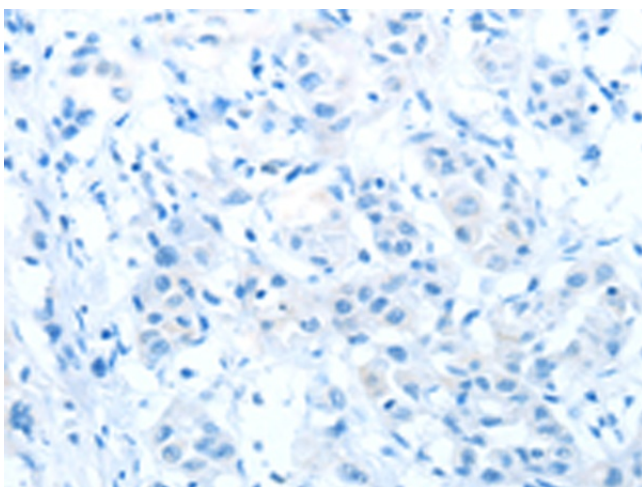
Immunohistochemistry of paraffin-embedded Human esophagus cancer tissue using [TA323407] (NRP1 Antibody) at dilution 1/25 (Original magnification: $\times 200$)



Immunohistochemistry of paraffin-embedded Human esophagus cancer tissue using [TA323407] (NRP1 Antibody) at dilution 1/25, treated with fusion protein. (Original magnification: $\times 200$)



Immunohistochemistry of paraffin-embedded Human lung cancer tissue using [TA323407] (NRP1 Antibody) at dilution 1/25 (Original magnification: $\times 200$)



Immunohistochemistry of paraffin-embedded Human lung cancer tissue using [TA323407] (NRP1 Antibody) at dilution 1/25, treated with fusion protein. (Original magnification: $\times 200$)