

## Product datasheet for **TA323404**

### TRAF5 Rabbit Polyclonal Antibody

#### Product data:

Product Type:	Primary Antibodies
Applications:	IHC
Recommended Dilution:	IHC: 25-100 Positive control: Human colon cancer Predicted cell location: Cytoplasm
Reactivity:	Human, Mouse
Host:	Rabbit
Isotype:	IgG
Clonality:	Polyclonal
Immunogen:	Fusion protein corresponding to a region derived from 403-557 amino acids of human TNF receptor-associated factor 5
Formulation:	PBS pH7.3, 0.05% NaN <sub>3</sub> , 50% glycerol
Concentration:	lot specific
Purification:	Antigen affinity purification
Conjugation:	Unconjugated
Storage:	Store at -20°C as received.
Stability:	Stable for 12 months from date of receipt.
Gene Name:	TNF receptor associated factor 5
Database Link:	<a href="#">NP_665702</a> <a href="#">Entrez Gene 22033 Mouse</a> <a href="#">Entrez Gene 7188 Human</a> <a href="#">O00463</a>

**Background:** The scaffold protein encoded by this gene is a member of the tumor necrosis factor receptor-associated factor (TRAF) protein family and contains a meprin and TRAF homology (MATH) domain; a RING-type zinc finger; and two TRAF-type zinc fingers. TRAF proteins are associated with; and mediate signal transduction from members of the TNF receptor superfamily. This protein is one of the components of a multiple protein complex which binds to tumor necrosis factor (TNF) receptor cytoplasmic domains and mediates TNF-induced activation. Alternate transcriptional splice variants have been characterized.



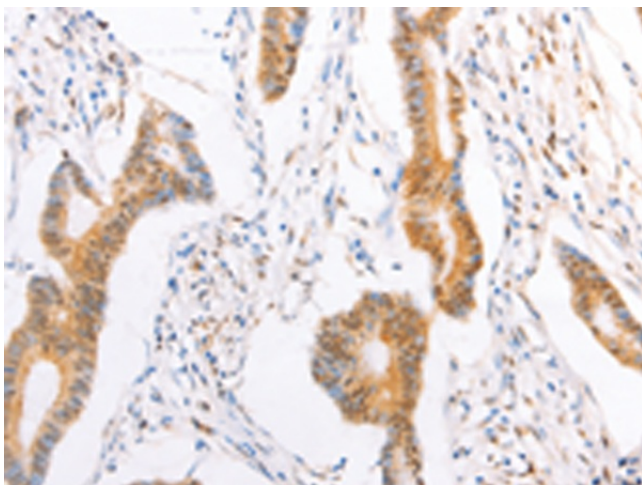
[View online »](#)

Synonyms: MGC:39780; RNF84

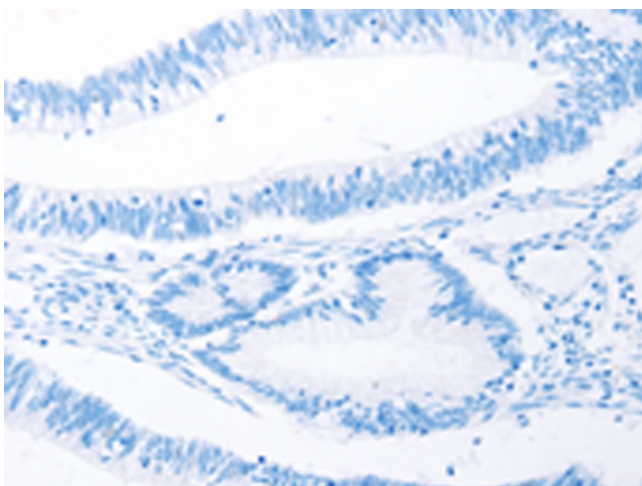
Protein Families: Druggable Genome

Protein Pathways: Pathways in cancer, Small cell lung cancer

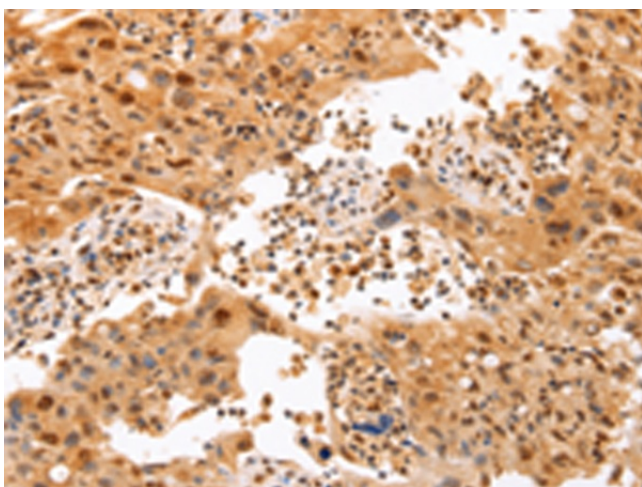
### Product images:



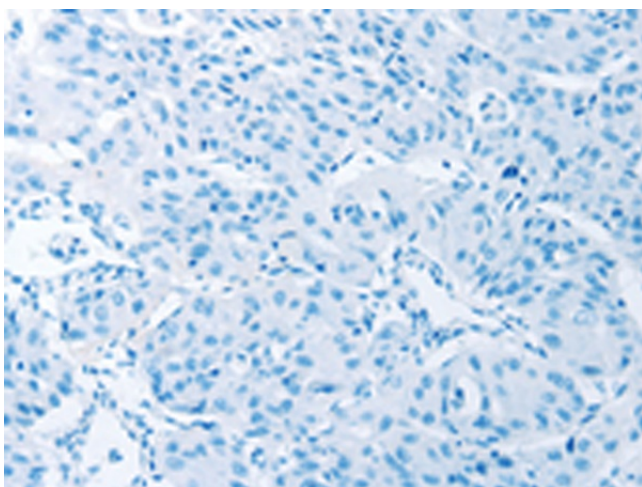
Immunohistochemistry of paraffin-embedded Human colon cancer tissue using TA323404 (TRAF5 Antibody) at dilution 1/20 (Original magnification:  $\times 200$ )



Immunohistochemistry of paraffin-embedded Human colon cancer tissue using TA323404 (TRAF5 Antibody) at dilution 1/20, treated with fusion protein. (Original magnification:  $\times 200$ )



Immunohistochemistry of paraffin-embedded Human lung cancer tissue using TA323404 (TRAF5 Antibody) at dilution 1/20 (Original magnification:  $\times 200$ )



Immunohistochemistry of paraffin-embedded Human lung cancer tissue using TA323404 (TRAF5 Antibody) at dilution 1/20, treated with fusion protein. (Original magnification:  $\times 200$ )