

Product datasheet for **TA323403S**

TRAF5 Rabbit Polyclonal Antibody

Product data:

Product Type:	Primary Antibodies
Applications:	IHC, WB
Recommended Dilution:	WB: 500-2000 WB positive control: Jurkat cells IHC: 25-100 Positive control: Human lung cancer Predicted cell location: Cytoplasm
Reactivity:	Human, Mouse
Host:	Rabbit
Isotype:	IgG
Clonality:	Polyclonal
Immunogen:	Fusion protein corresponding to a region derived from 403-557 amino acids of human TNF receptor-associated factor 5
Formulation:	PBS pH7.3, 0.05% NaN ₃ , 50% glycerol
Purification:	Antigen affinity purification
Conjugation:	Unconjugated
Storage:	Store at -20°C as received.
Stability:	Stable for 12 months from date of receipt.
Predicted Protein Size:	64 kDa
Gene Name:	TNF receptor associated factor 5
Database Link:	NP_001029082 Entrez Gene 22033 Mouse Entrez Gene 7188 Human O00463



[View online »](#)

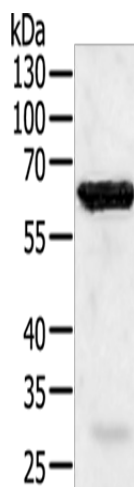
Background: The scaffold protein encoded by this gene is a member of the tumor necrosis factor receptor-associated factor (TRAF) protein family and contains a meprin and TRAF homology (MATH) domain; a RING-type zinc finger; and two TRAF-type zinc fingers. TRAF proteins are associated with; and mediate signal transduction from members of the TNF receptor superfamily. This protein is one of the components of a multiple protein complex which binds to tumor necrosis factor (TNF) receptor cytoplasmic domains and mediates TNF-induced activation. Alternate transcriptional splice variants have been characterized.

Synonyms: MGC:39780; RNF84

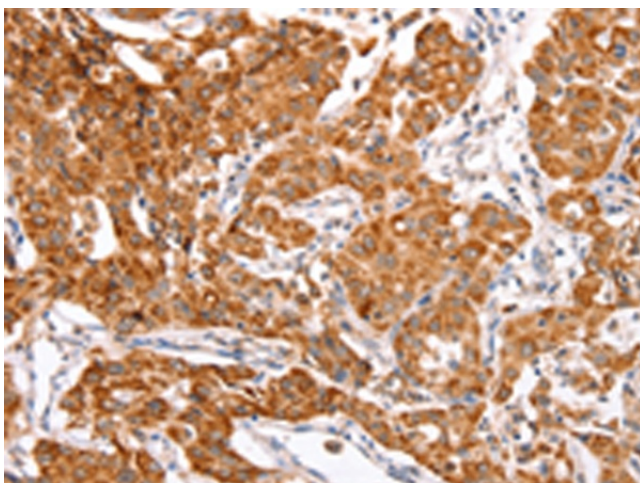
Protein Families: Druggable Genome

Protein Pathways: Pathways in cancer, Small cell lung cancer

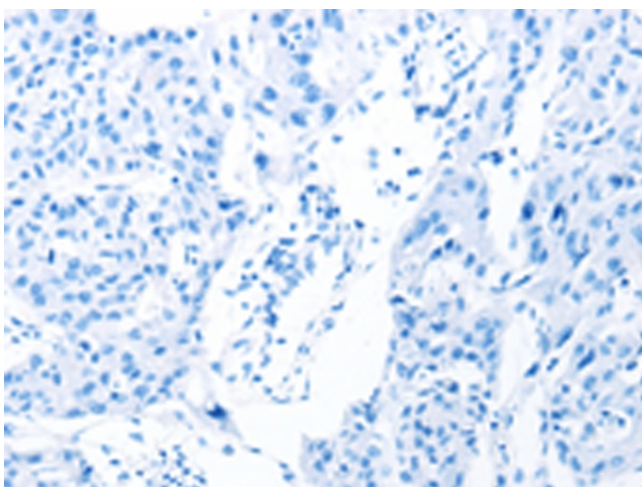
Product images:



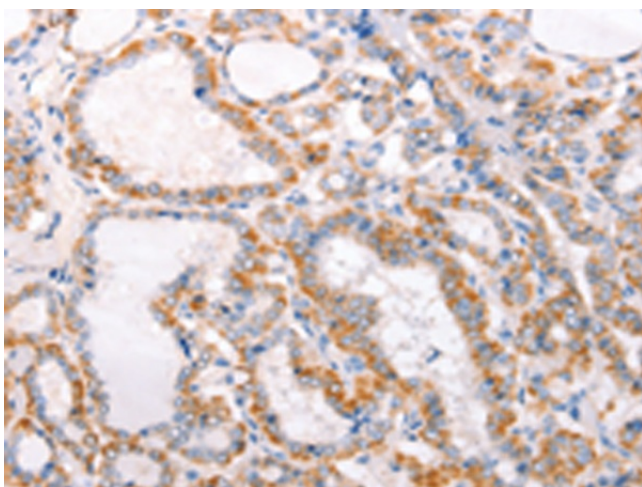
Gel: 10%SDS-PAGE
Lysate: 40 µg
Lane: Jurkat cells
Primary antibody: [TA323403] (TRAF5 Antibody) at dilution 1/450
Secondary antibody: Goat anti rabbit IgG at 1/8000 dilution
Exposure time: 3 seconds



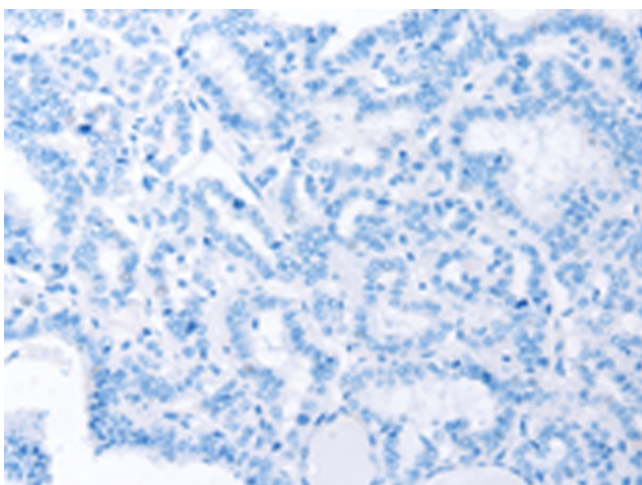
Immunohistochemistry of paraffin-embedded Human lung cancer tissue using [TA323403] (TRAF5 Antibody) at dilution 1/30 (Original magnification: ×200)



Immunohistochemistry of paraffin-embedded Human lung cancer tissue using [TA323403] (TRAF5 Antibody) at dilution 1/30, treated with fusion protein. (Original magnification: $\times 200$)



Immunohistochemistry of paraffin-embedded Human thyroid cancer tissue using [TA323403] (TRAF5 Antibody) at dilution 1/30 (Original magnification: $\times 200$)



Immunohistochemistry of paraffin-embedded Human thyroid cancer tissue using [TA323403] (TRAF5 Antibody) at dilution 1/30, treated with fusion protein. (Original magnification: $\times 200$)