

## Product datasheet for **TA323400**

### AMD1 Rabbit Polyclonal Antibody

#### Product data:

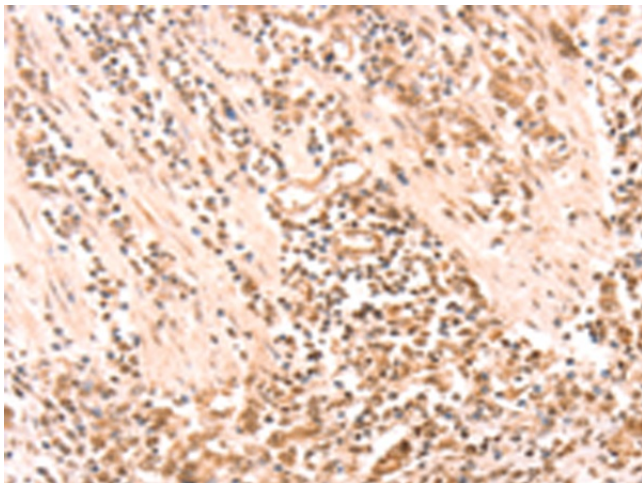
Product Type:	Primary Antibodies
Applications:	IHC
Recommended Dilution:	IHC: 25-100 Positive control: Human gastric cancer Predicted cell location: Nucleus, Cytoplasm
Reactivity:	Human, Mouse, Rat
Host:	Rabbit
Isotype:	IgG
Clonality:	Polyclonal
Immunogen:	Synthetic peptide corresponding to a region derived from 298-310 amino acids of human adenosylmethionine decarboxylase 1
Formulation:	PBS pH7.3, 0.05% NaN <sub>3</sub> , 50% glycerol
Concentration:	lot specific
Purification:	Antigen affinity purification
Conjugation:	Unconjugated
Storage:	Store at -20°C as received.
Stability:	Stable for 12 months from date of receipt.
Gene Name:	adenosylmethionine decarboxylase 1
Database Link:	<a href="#">NP_001625</a> <a href="#">Entrez Gene 11702 MouseEntrez Gene 81640 RatEntrez Gene 262 Human P17707</a>
Background:	This gene encodes an important intermediate enzyme in polyamine biosynthesis. The polyamines spermine; spermidine; and putrescine are low-molecular-weight aliphatic amines essential for cellular proliferation and tumor promotion. Two alternatively spliced transcript variants that encode different proteins have been identified. Pseudogenes of this gene are found on chromosomes 5; 6; 10; X and Y.
Synonyms:	ADOMETDC; AMD; SAMDC
Protein Families:	Druggable Genome



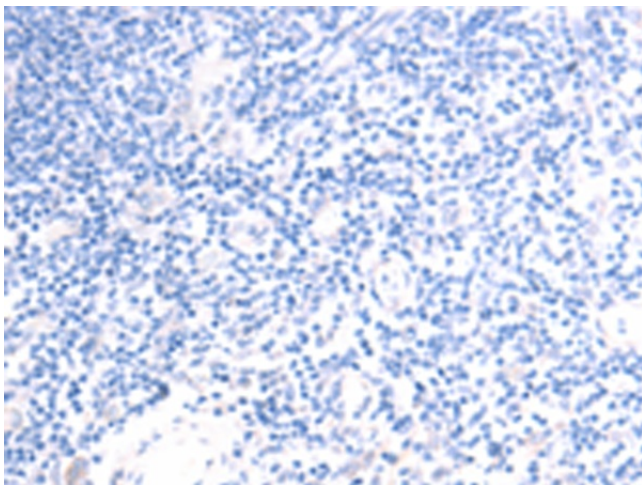
[View online »](#)

Protein Pathways: Arginine and proline metabolism, Cysteine and methionine metabolism, Metabolic pathways

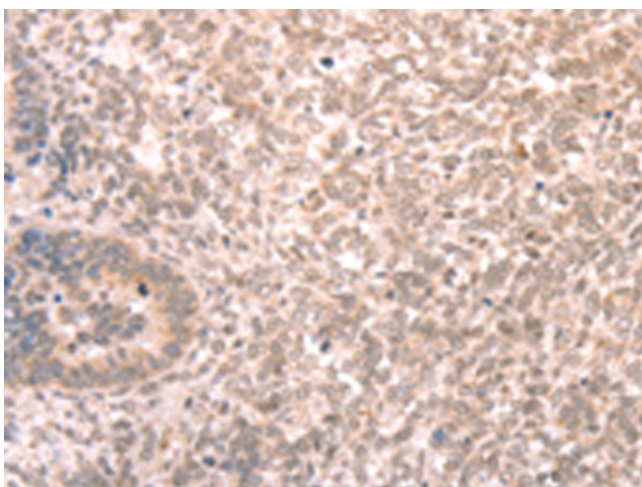
### Product images:



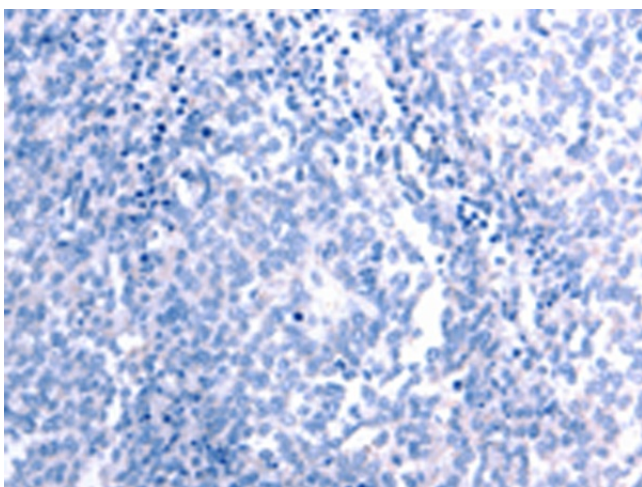
Immunohistochemistry of paraffin-embedded Human gastric cancer tissue using TA323400 (AMD1 Antibody) at dilution 1/20 (Original magnification: x200)



Immunohistochemistry of paraffin-embedded Human gastric cancer tissue using TA323400 (AMD1 Antibody) at dilution 1/20, treated with synthetic peptide. (Original magnification: x200)



Immunohistochemistry of paraffin-embedded Human ovarian cancer tissue using TA323400 (AMD1 Antibody) at dilution 1/20 (Original magnification:  $\times 200$ )



Immunohistochemistry of paraffin-embedded Human ovarian cancer tissue using TA323400 (AMD1 Antibody) at dilution 1/20, treated with synthetic peptide. (Original magnification:  $\times 200$ )