

Product datasheet for **TA323399S**

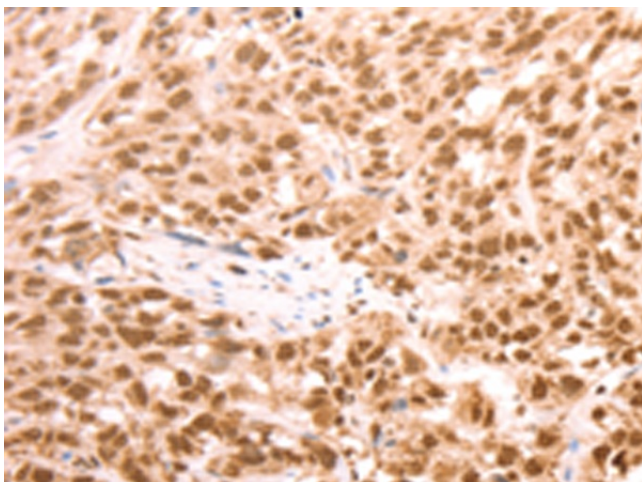
AMD1 Rabbit Polyclonal Antibody

Product data:

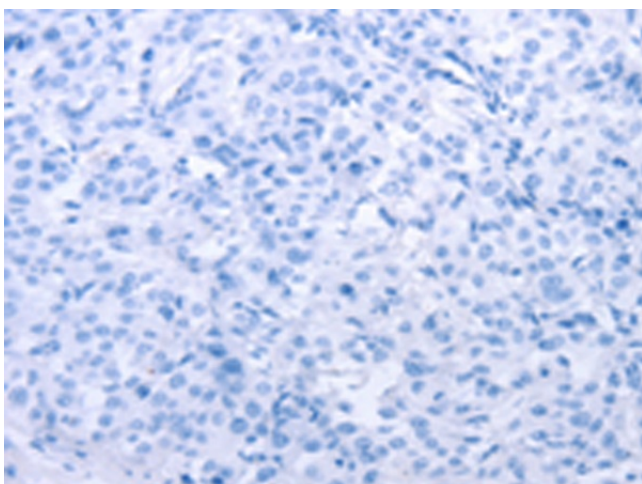
Product Type:	Primary Antibodies
Applications:	IHC
Recommended Dilution:	IHC: 50-200 Positive control: Human esophagus cancer Predicted cell location: Nucleus, Cytoplasm
Reactivity:	Human, Mouse, Rat
Host:	Rabbit
Isotype:	IgG
Clonality:	Polyclonal
Immunogen:	Synthetic peptide corresponding to a region derived from 298-310 amino acids of human adenosylmethionine decarboxylase 1
Formulation:	PBS pH7.3, 0.05% NaN ₃ , 50% glycerol
Purification:	Antigen affinity purification
Conjugation:	Unconjugated
Storage:	Store at -20°C as received.
Stability:	Stable for 12 months from date of receipt.
Gene Name:	adenosylmethionine decarboxylase 1
Database Link:	NP_001625 Entrez Gene 11702 Mouse Entrez Gene 81640 Rat Entrez Gene 262 Human P17707
Background:	This gene encodes an important intermediate enzyme in polyamine biosynthesis. The polyamines spermine; spermidine; and putrescine are low-molecular-weight aliphatic amines essential for cellular proliferation and tumor promotion. Two alternatively spliced transcript variants that encode different proteins have been identified. Pseudogenes of this gene are found on chromosomes 5; 6; 10; X and Y.
Synonyms:	ADOMETDC; AMD; SAMDC
Protein Families:	Druggable Genome
Protein Pathways:	Arginine and proline metabolism, Cysteine and methionine metabolism, Metabolic pathways



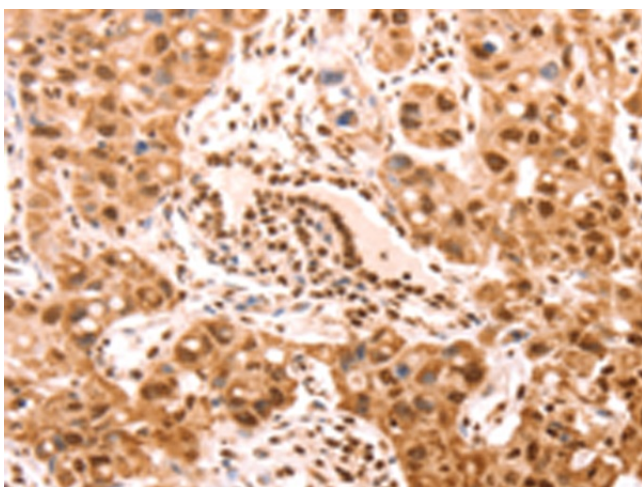
[View online »](#)

Product images:

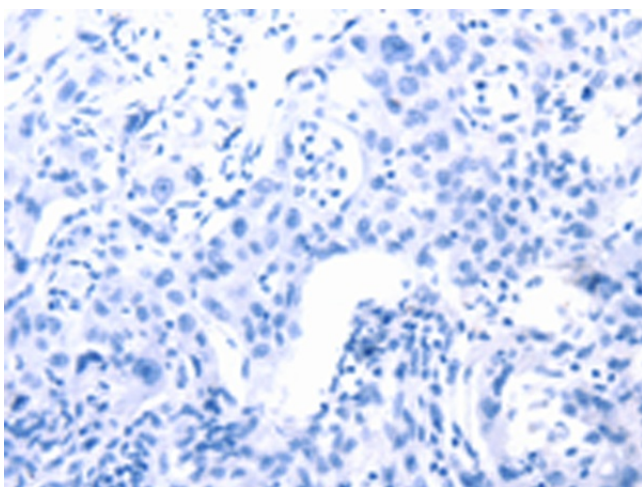
Immunohistochemistry of paraffin-embedded Human esophagus cancer tissue using [TA323399] (AMD1 Antibody) at dilution 1/25 (Original magnification: $\times 200$)



Immunohistochemistry of paraffin-embedded Human esophagus cancer tissue using [TA323399] (AMD1 Antibody) at dilution 1/25, treated with synthetic peptide. (Original magnification: $\times 200$)



Immunohistochemistry of paraffin-embedded Human lung cancer tissue using [TA323399] (AMD1 Antibody) at dilution 1/25 (Original magnification: $\times 200$)



Immunohistochemistry of paraffin-embedded Human lung cancer tissue using [TA323399] (AMD1 Antibody) at dilution 1/25, treated with synthetic peptide. (Original magnification: $\times 200$)