

Product datasheet for **TA323398**

Glutamine Synthetase (GLUL) Rabbit Polyclonal Antibody

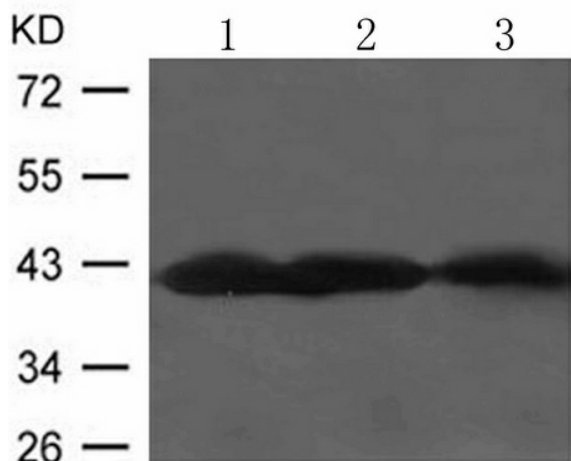
Product data:

Product Type:	Primary Antibodies
Applications:	WB
Recommended Dilution:	WB: 1:500-1000
Reactivity:	Human, Mouse, Rat
Host:	Rabbit
Isotype:	IgG
Clonality:	Polyclonal
Immunogen:	Peptide sequence around aa.365~369(G-D-E-P-F) derived from Human Glutamine Synthetase
Formulation:	PBS pH7.3, 0.05% NaN ₃ , 50% glycerol
Concentration:	lot specific
Purification:	Antigen affinity purification
Conjugation:	Unconjugated
Storage:	Store at -20°C as received.
Stability:	Stable for 12 months from date of receipt.
Predicted Protein Size:	42 kDa
Gene Name:	glutamate-ammonia ligase
Database Link:	NP_001028216 Entrez Gene 14645 Mouse Entrez Gene 24957 Rat Entrez Gene 2752 Human P15104
Background:	This enzyme has 2 functions: it catalyzes the production of glutamine and 4-aminobutanoate (gamma-aminobutyric acid, GABA), the latter in a pyridoxal phosphate-independent manner . Essential for proliferation of fetal skin fibroblasts.
Synonyms:	GLNS; GS; PIG43; PIG59
Protein Pathways:	Alanine, aspartate and glutamate metabolism, Arginine and proline metabolism, Metabolic pathways, Nitrogen metabolism



[View online »](#)

Product images:



Predicted band size: 42 kDa. Positive control: Rat and Mouse brain tissue and C6 cells lysate. Recommended dilution: 1/ 500-1000. (Gel: 10%SDS-PAGE Lane 1, 2, 3: Rat and Mouse brain tissue and C6 cells lysate Lysates: 30 ug per lane Primary antibody: 1/500 dilution Secondary antibody: Goat anti Rabbit IgG - H&L (HRP) at 1/10000 dilution Exposure time: 1 minute)