

## Product datasheet for **TA323396**

### RRM1 Rabbit Polyclonal Antibody

#### Product data:

Product Type:	Primary Antibodies
Applications:	WB
Recommended Dilution:	WB: 500-2000 WB positive control: Hela cells
Reactivity:	Human, Mouse
Host:	Rabbit
Isotype:	IgG
Clonality:	Polyclonal
Immunogen:	Fusion protein corresponding to C terminal 226 amino acids of human ribonucleotide reductase M1
Formulation:	PBS pH7.3, 0.05% NaN <sub>3</sub> , 50% glycerol
Concentration:	lot specific
Purification:	Antigen affinity purification
Conjugation:	Unconjugated
Storage:	Store at -20°C as received.
Stability:	Stable for 12 months from date of receipt.
Predicted Protein Size:	90 kDa
Gene Name:	ribonucleotide reductase catalytic subunit M1
Database Link:	<a href="#">NP_001024</a> <a href="#">Entrez Gene 20133 Mouse</a> <a href="#">Entrez Gene 6240 Human</a> <a href="#">P23921</a>

**Background:** This gene encodes one of two non-identical subunits that constitute ribonucleoside-diphosphate reductase; an enzyme essential for the production of deoxyribonucleotides prior to DNA synthesis in S phase of dividing cells. It is one of several genes located in the imprinted gene domain of 11p15.5; an important tumor-suppressor gene region. Alterations in this region have been associated with the Beckwith-Wiedemann syndrome; Wilms tumor; rhabdomyosarcoma; adrenocortical carcinoma; and lung; ovarian; and breast cancer. This gene may play a role in malignancies and disease that involve this region.



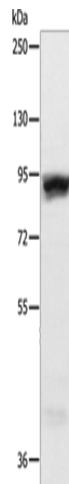
[View online »](#)

Synonyms: R1; RIR1; RR1

Protein Families: Druggable Genome

Protein Pathways: Glutathione metabolism, Metabolic pathways, Purine metabolism, Pyrimidine metabolism

### Product images:



Gel: 10%SDS-PAGE

Lysate: 50  $\mu$ g

Lane: Hela cells

Primary antibody: TA323396 (RRM1 Antibody) at dilution 1/600

Secondary antibody: Goat anti rabbit IgG at 1/8000 dilution

Exposure time: 30 seconds