

Product datasheet for **TA323395S**

RRM1 Rabbit Polyclonal Antibody

Product data:

Product Type:	Primary Antibodies
Applications:	IHC, WB
Recommended Dilution:	WB: 200-1000 WB positive control: Hela and 231 cells IHC: 25-100 Positive control: Human liver cancer Predicted cell location: Cytoplasm
Reactivity:	Human, Mouse
Host:	Rabbit
Isotype:	IgG
Clonality:	Polyclonal
Immunogen:	Fusion protein corresponding to C terminal 226 amino acids of human ribonucleotide reductase M1
Formulation:	PBS pH7.3, 0.05% NaN ₃ , 50% glycerol
Purification:	Antigen affinity purification
Conjugation:	Unconjugated
Storage:	Store at -20°C as received.
Stability:	Stable for 12 months from date of receipt.
Predicted Protein Size:	90 kDa
Gene Name:	ribonucleotide reductase catalytic subunit M1
Database Link:	NP_001024 Entrez Gene 20133 Mouse Entrez Gene 6240 Human P23921



[View online »](#)

Background:

This gene encodes one of two non-identical subunits that constitute ribonucleoside-diphosphate reductase; an enzyme essential for the production of deoxyribonucleotides prior to DNA synthesis in S phase of dividing cells. It is one of several genes located in the imprinted gene domain of 11p15.5; an important tumor-suppressor gene region. Alterations in this region have been associated with the Beckwith-Wiedemann syndrome; Wilms tumor; rhabdomyosarcoma; adrenocortical carcinoma; and lung; ovarian; and breast cancer. This gene may play a role in malignancies and disease that involve this region.

Synonyms:

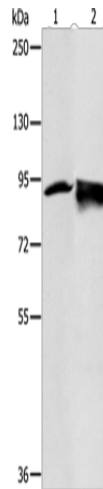
R1; RIR1; RR1

Protein Families:

Druggable Genome

Protein Pathways:

Glutathione metabolism, Metabolic pathways, Purine metabolism, Pyrimidine metabolism

Product images:

Gel: 10%SDS-PAGE

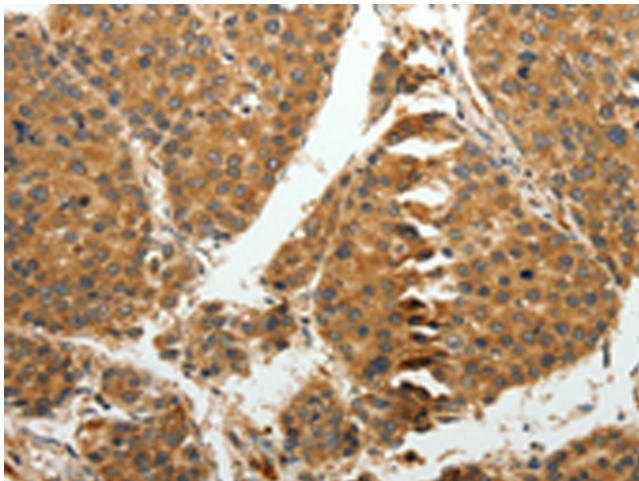
Lysate: 50 µg

Lane 1-2: HeLa cells
231 cells

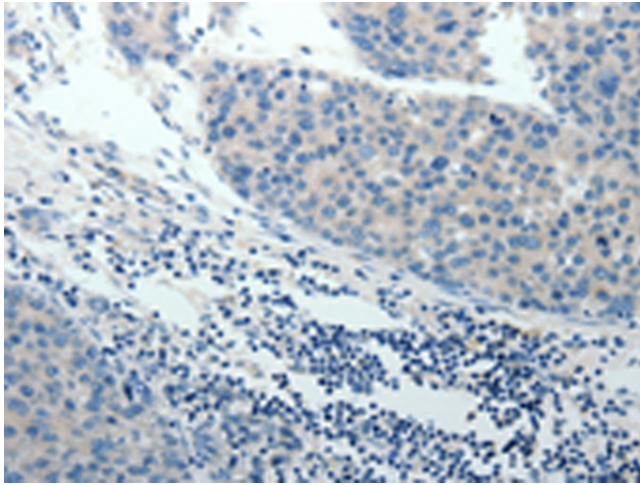
Primary antibody: [TA323395] (RRM1 Antibody) at
dilution 1/200

Secondary antibody: Goat anti rabbit IgG at
1/8000 dilution

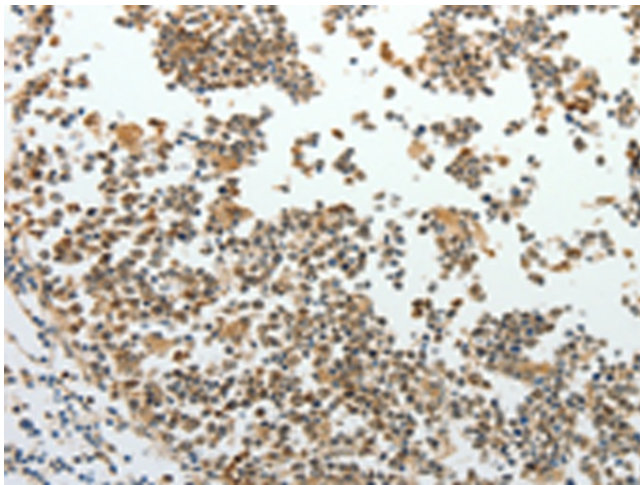
Exposure time: 1 minute



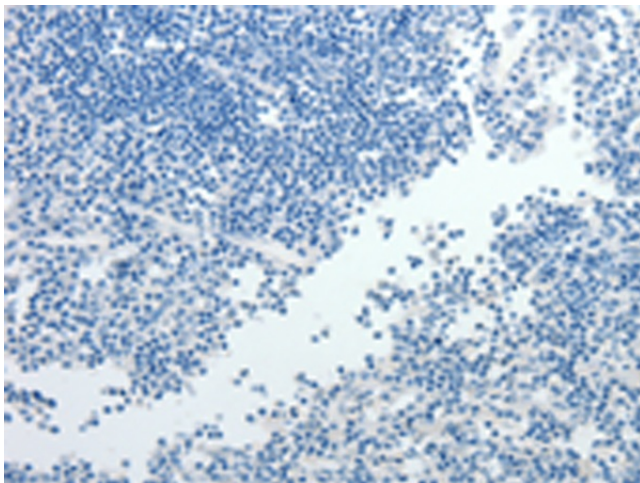
Immunohistochemistry of paraffin-embedded
Human liver cancer tissue using [TA323395]
(RRM1 Antibody) at dilution 1/15 (Original
magnification: x200)



Immunohistochemistry of paraffin-embedded Human liver cancer tissue using [TA323395] (RRM1 Antibody) at dilution 1/15, treated with fusion protein. (Original magnification: $\times 200$)



Immunohistochemistry of paraffin-embedded Human tonsil tissue using [TA323395] (RRM1 Antibody) at dilution 1/15 (Original magnification: $\times 200$)



Immunohistochemistry of paraffin-embedded Human tonsil tissue using [TA323395] (RRM1 Antibody) at dilution 1/15, treated with fusion protein. (Original magnification: $\times 200$)