

Product datasheet for **TA323393**

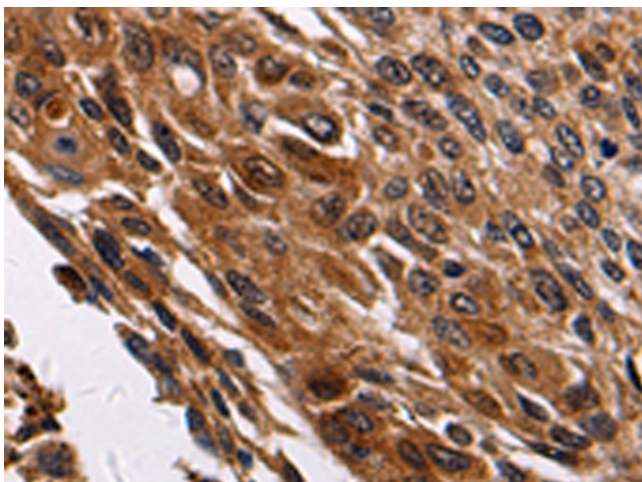
RAB41 Rabbit Polyclonal Antibody

Product data:

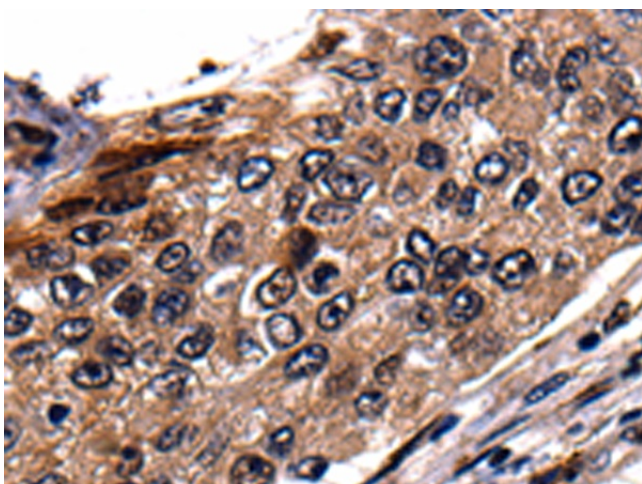
Product Type:	Primary Antibodies
Applications:	IHC
Recommended Dilution:	IHC: 100-200 Positive control: Human cervical cancer Predicted cell location: Cell membrane, Cytoplasm
Reactivity:	Human
Host:	Rabbit
Isotype:	IgG
Clonality:	Polyclonal
Immunogen:	Synthetic peptide corresponding to a region derived from 15-29 amino acids of Human Ras-related protein Rab-41
Formulation:	PBS pH7.3, 0.05% NaN ₃ , 50% glycerol
Concentration:	lot specific
Purification:	Antigen affinity purification
Conjugation:	Unconjugated
Storage:	Store at -20°C as received.
Stability:	Stable for 12 months from date of receipt.
Gene Name:	RAB41, member RAS oncogene family
Database Link:	NP_001027898 Entrez Gene 347517 Human Q5JT25
Background:	This gene encodes a small GTP-binding protein that belongs to the largest family within the Ras superfamily. These proteins function as regulators of membrane trafficking. They cycle between inactive GDP-bound and activated GTP-bound states; which is controlled by GTP hydrolysis-activating proteins (GAPs). This family member can be activated by the GAP protein RN-Tre; and it is localized to the Golgi complex.
Synonyms:	member RAS homolog family; member RAS oncogene family; RAB41
Protein Families:	Druggable Genome



[View online »](#)

Product images:


Immunohistochemistry of paraffin-embedded Human cervical cancer tissue using TA323393 (RAB41 Antibody) at dilution 1/100. (Original magnification: ×200)



Immunohistochemistry of paraffin-embedded Human renal cancer tissue using TA323393 (RAB41 Antibody) at dilution 1/100. (Original magnification: ×200)