

## Product datasheet for **TA323390S**

### MMP28 Rabbit Polyclonal Antibody

#### Product data:

Product Type:	Primary Antibodies
Applications:	IHC, WB
Recommended Dilution:	WB: 200-1000 WB positive control: Mouse heart tissue IHC: 25-100 Positive control: Human colon cancer Predicted cell location: Cytoplasm
Reactivity:	Human, Mouse
Host:	Rabbit
Isotype:	IgG
Clonality:	Polyclonal
Immunogen:	Fusion protein corresponding to C terminal 300 amino acids of human matrix metalloproteinase 28
Formulation:	PBS pH7.3, 0.05% NaN <sub>3</sub> , 50% glycerol
Purification:	Antigen affinity purification
Conjugation:	Unconjugated
Storage:	Store at -20°C as received.
Stability:	Stable for 12 months from date of receipt.
Predicted Protein Size:	44 kDa
Gene Name:	matrix metalloproteinase 28
Database Link:	<a href="#">NP_001027449</a> <a href="#">Entrez Gene 118453 Mouse</a> <a href="#">Entrez Gene 79148 Human</a> <a href="#">Q9H239</a>



[View online »](#)

**Background:** Proteins of the matrix metalloproteinase (MMP) family are involved in the breakdown of extracellular matrix for both normal physiological processes; such as embryonic development; reproduction and tissue remodeling; and disease processes; such as asthma and metastasis. This gene encodes a secreted enzyme that degrades casein. Its expression pattern suggests that it plays a role in tissue homeostasis and in wound repair. Transcript variants encoding different isoforms have been described.

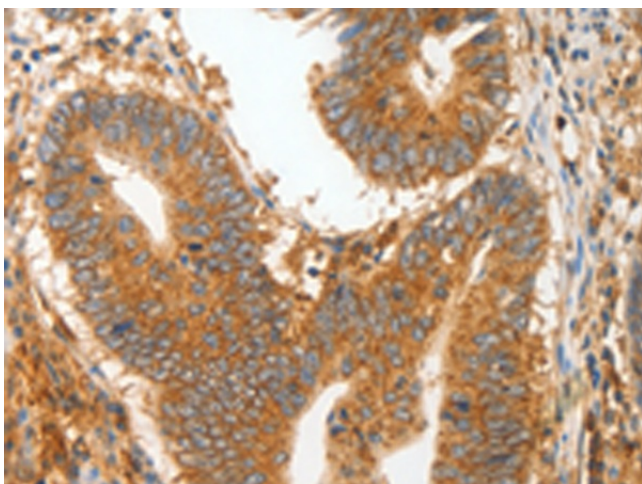
**Synonyms:** EPILYSIN; MM28; MMP-25; MMP-28; MMP25

**Protein Families:** Druggable Genome, Protease, Secreted Protein

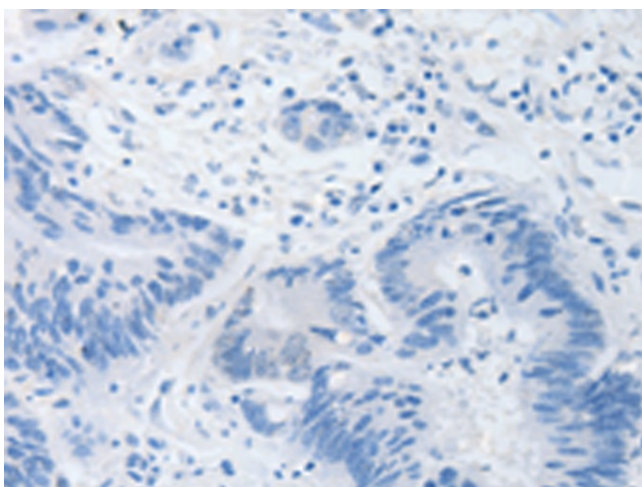
**Product images:**



Gel: 10%SDS-PAGE  
 Lysate: 50 µg  
 Lane: Mouse heart tissue  
 Primary antibody: [TA323390] (MMP28 Antibody) at dilution 1/400  
 Secondary antibody: Goat anti rabbit IgG at 1/8000 dilution  
 Exposure time: 5 minutes



Immunohistochemistry of paraffin-embedded Human colon cancer tissue using [TA323390] (MMP28 Antibody) at dilution 1/20 (Original magnification: ×200)



Immunohistochemistry of paraffin-embedded Human colon cancer tissue using [TA323390] (MMP28 Antibody) at dilution 1/20, treated with fusion protein. (Original magnification: ×200)