

Product datasheet for **TA323390**

MMP28 Rabbit Polyclonal Antibody

Product data:

Product Type:	Primary Antibodies
Applications:	IHC, WB
Recommended Dilution:	WB: 200-1000 WB positive control: Mouse heart tissue IHC: 25-100 Positive control: Human colon cancer Predicted cell location: Cytoplasm
Reactivity:	Human, Mouse
Host:	Rabbit
Isotype:	IgG
Clonality:	Polyclonal
Immunogen:	Fusion protein corresponding to C terminal 300 amino acids of human matrix metalloproteinase 28
Formulation:	PBS pH7.3, 0.05% NaN ₃ , 50% glycerol
Concentration:	lot specific
Purification:	Antigen affinity purification
Conjugation:	Unconjugated
Storage:	Store at -20°C as received.
Stability:	Stable for 12 months from date of receipt.
Predicted Protein Size:	44 kDa
Gene Name:	matrix metalloproteinase 28
Database Link:	NP_001027449 Entrez Gene 118453 Mouse Entrez Gene 79148 Human Q9H239



[View online »](#)

Background: Proteins of the matrix metalloproteinase (MMP) family are involved in the breakdown of extracellular matrix for both normal physiological processes; such as embryonic development; reproduction and tissue remodeling; and disease processes; such as asthma and metastasis. This gene encodes a secreted enzyme that degrades casein. Its expression pattern suggests that it plays a role in tissue homeostasis and in wound repair. Transcript variants encoding different isoforms have been described.

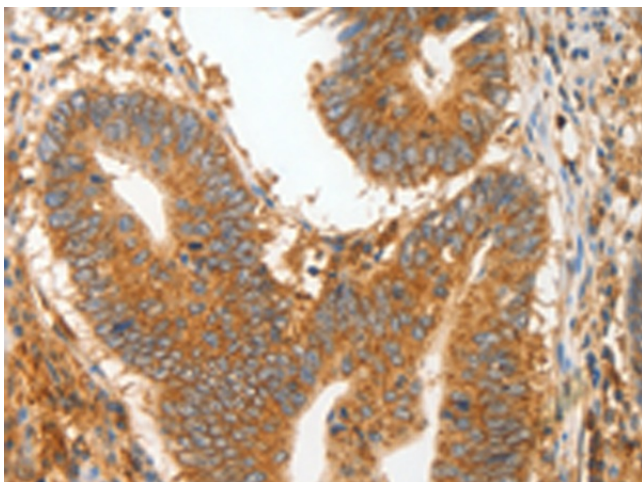
Synonyms: EPILYSIN; MM28; MMP-25; MMP-28; MMP25

Protein Families: Druggable Genome, Protease, Secreted Protein

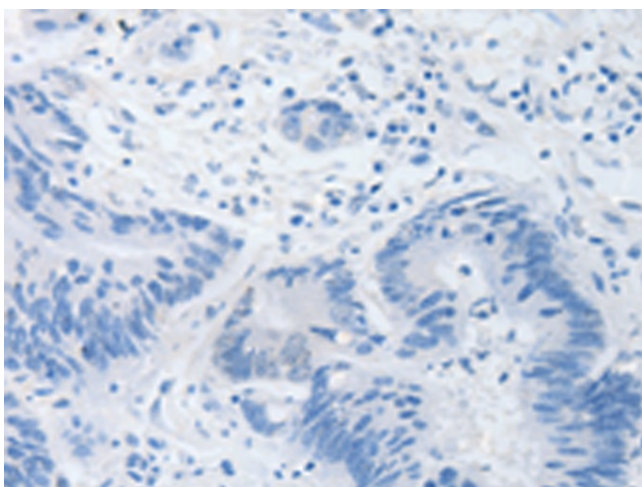
Product images:



Gel: 10%SDS-PAGE
Lysate: 50 μ g
Lane: Mouse heart tissue
Primary antibody: TA323390 (MMP28 Antibody) at dilution 1/400
Secondary antibody: Goat anti rabbit IgG at 1/8000 dilution
Exposure time: 5 minutes



Immunohistochemistry of paraffin-embedded Human colon cancer tissue using TA323390 (MMP28 Antibody) at dilution 1/20 (Original magnification: \times 200)



Immunohistochemistry of paraffin-embedded Human colon cancer tissue using TA323390 (MMP28 Antibody) at dilution 1/20, treated with fusion protein. (Original magnification: ×200)