

## Product datasheet for **TA323389**

### MMP28 Rabbit Polyclonal Antibody

#### Product data:

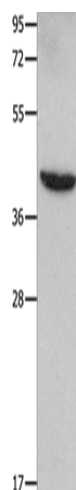
Product Type:	Primary Antibodies
Applications:	WB
Recommended Dilution:	WB: 500-2000 WB positive control: Mouse heart tissue
Reactivity:	Human, Mouse
Host:	Rabbit
Isotype:	IgG
Clonality:	Polyclonal
Immunogen:	Fusion protein corresponding to C terminal 300 amino acids of human matrix metalloproteinase 28
Formulation:	PBS pH7.3, 0.05% NaN <sub>3</sub> , 50% glycerol
Concentration:	lot specific
Purification:	Antigen affinity purification
Conjugation:	Unconjugated
Storage:	Store at -20°C as received.
Stability:	Stable for 12 months from date of receipt.
Predicted Protein Size:	44 kDa
Gene Name:	matrix metalloproteinase 28
Database Link:	<a href="#">NP_001027449</a> <a href="#">Entrez Gene 118453 Mouse</a> <a href="#">Entrez Gene 79148 Human</a> <a href="#">Q9H239</a>
Background:	Proteins of the matrix metalloproteinase (MMP) family are involved in the breakdown of extracellular matrix for both normal physiological processes; such as embryonic development; reproduction and tissue remodeling; and disease processes; such as asthma and metastasis. This gene encodes a secreted enzyme that degrades casein. Its expression pattern suggests that it plays a role in tissue homeostasis and in wound repair. Transcript variants encoding different isoforms have been described.
Synonyms:	EPILYSIN; MM28; MMP-25; MMP-28; MMP25



[View online »](#)

Protein Families: Druggable Genome, Protease, Secreted Protein

### Product images:



Gel: 12%SDS-PAGE  
Lysate: 30  $\mu$ g  
Lane: Mouse heart tissue  
Primary antibody: TA323389 (MMP28 Antibody)  
at dilution 1/350  
Secondary antibody: Goat anti rabbit IgG at  
1/8000 dilution  
Exposure time: 40 seconds