

Product datasheet for **TA323386**

Prostate Specific Antigen (KLK3) Rabbit Polyclonal Antibody

Product data:

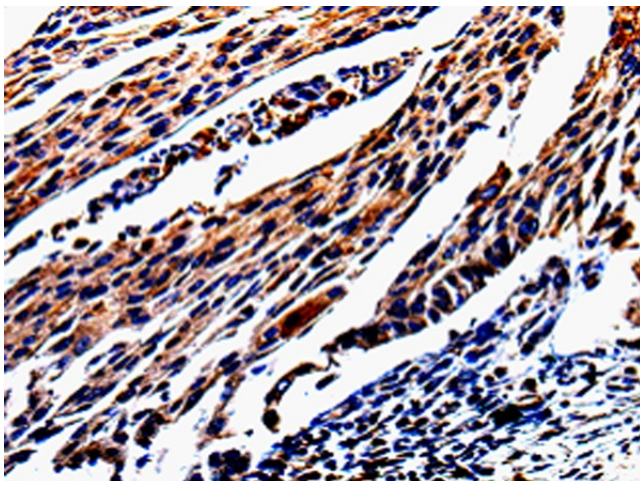
Product Type:	Primary Antibodies
Applications:	IHC
Recommended Dilution:	IHC: 25-100 Positive control: Human cervical cancer Predicted cell location: Cytoplasm
Reactivity:	Human
Host:	Rabbit
Isotype:	IgG
Clonality:	Polyclonal
Immunogen:	Fusion protein corresponding to N terminal 258 amino acids of Human Kallikrein-3
Formulation:	PBS pH7.3, 0.05% NaN ₃ , 50% glycerol
Concentration:	lot specific
Purification:	Antigen affinity purification
Conjugation:	Unconjugated
Storage:	Store at -20°C as received.
Stability:	Stable for 12 months from date of receipt.
Gene Name:	kallikrein related peptidase 3
Database Link:	NP_001639 Entrez Gene 354 Human P07288
Background:	KLK3 is a member of the kallikrein-related peptidase family secreted by the epithelial cells of the prostate gland and lead to the liquefaction of the seminal coagulum. It is thought to function normally in the liquefaction of seminal coagulum; presumably by hydrolysis of the high molecular mass seminal vesicle protein. Serum level of this protein; called PSA in the clinical setting; is useful in the diagnosis and monitoring of prostatic carcinoma.
Synonyms:	APS; hK3; KLK2A1; PSA
Protein Families:	Druggable Genome, Protease, Secreted Protein



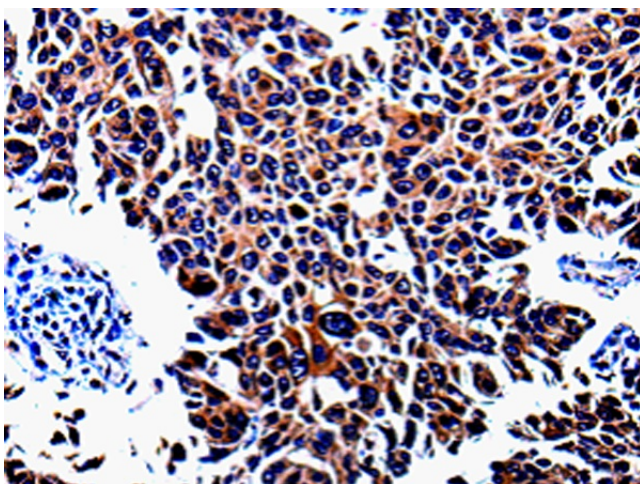
[View online »](#)

Protein Pathways: Pathways in cancer, Prostate cancer

Product images:



Immunohistochemistry of paraffin-embedded Human cervical cancer tissue using TA323386 (KLK3 Antibody) at dilution 1/25. (Original magnification: ×200)



Immunohistochemistry of paraffin-embedded Human lung cancer tissue using TA323386 (KLK3 Antibody) at dilution 1/25. (Original magnification: ×200)