

Product datasheet for **TA323385S**

VMA21 Rabbit Polyclonal Antibody

Product data:

Product Type:	Primary Antibodies
Applications:	IF, IHC
Recommended Dilution:	IHC: 150-500 Positive control: Human esophagus cancer Predicted cell location: Cytoplasm IF: 50-200 Positive control: HepG2 and NCCIT cell Predicted cell location: Cytoplasm
Reactivity:	Human, Mouse
Host:	Rabbit
Isotype:	IgG
Clonality:	Polyclonal
Immunogen:	Synthetic peptide corresponding to a region derived from 3-16 amino acids of human VMA21 vacuolar H ⁺ -ATPase homolog (<i>S. cerevisiae</i>)
Formulation:	PBS pH7.3, 0.05% NaN ₃ , 50% glycerol
Purification:	Antigen affinity purification
Conjugation:	Unconjugated
Storage:	Store at -20°C as received.
Stability:	Stable for 12 months from date of receipt.
Gene Name:	VMA21 vacuolar H ⁺ -ATPase homolog (<i>S. cerevisiae</i>)
Database Link:	NP_001017980 Entrez Gene 67048 Mouse Entrez Gene 203547 Human Q3ZAQ7



[View online »](#)

Background:

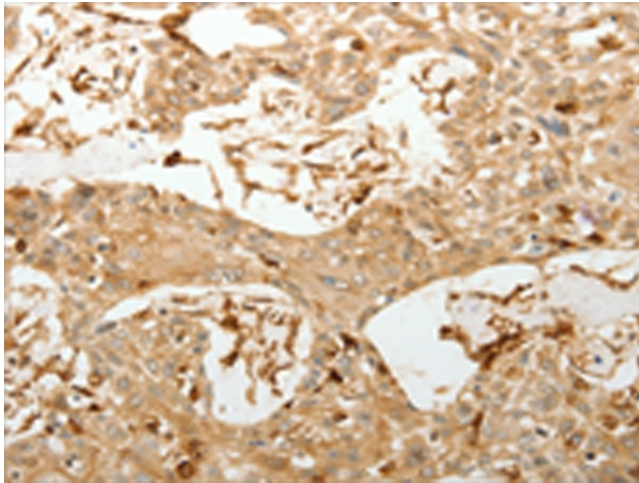
This gene encodes a chaperone for assembly of lysosomal vacuolar ATPase. Required for the assembly of the V0 complex of the vacuolar ATPase (V-ATPase) in the endoplasmic reticulum. Associates with the V0 complex of the vacuolar ATPase (V-ATPase). MEAX is a childhood-onset disease characterized by progressive vacuolation and atrophy of skeletal muscle. It is inherited in recessive fashion; affecting boys and sparing carrier females. Onset is in childhood; and patients exhibit weakness of the proximal muscles of the lower extremities; progressing slowly to involve other skeletal muscle groups over time.

Synonyms:

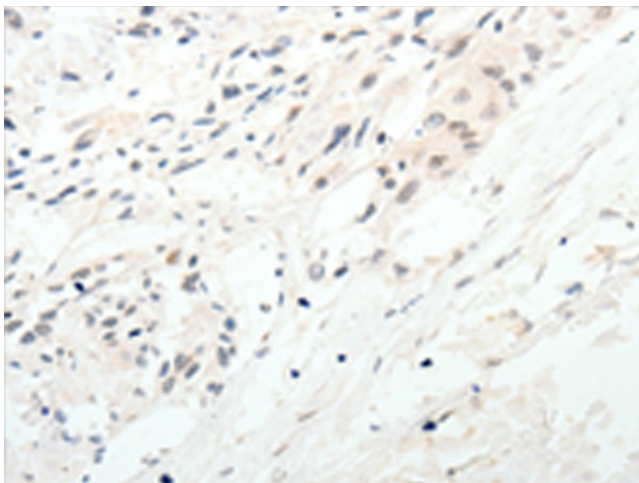
MEAX; XMEA

Protein Families:

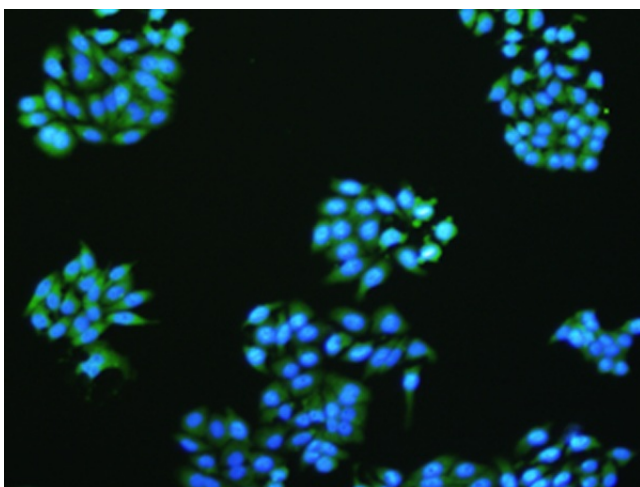
Transmembrane

Product images:

Immunohistochemistry of paraffin-embedded Human esophagus cancer tissue using [TA323385] (VMA21 Antibody) at dilution 1/150 (Original magnification: $\times 200$)



Immunohistochemistry of paraffin-embedded Human esophagus cancer tissue using [TA323385] (VMA21 Antibody) at dilution 1/150, treated with synthetic peptide. (Original magnification: $\times 200$)



The image is immunofluorescence of HepG2 cell using [TA323385] (VMA21 Antibody) at dilution 1/50.