

## Product datasheet for **TA323381**

### AGAP1 Rabbit Polyclonal Antibody

#### Product data:

Product Type:	Primary Antibodies
Applications:	IHC, WB
Recommended Dilution:	WB: 500-2000 WB positive control: Human liver cancer tissue, hela cells and mouse lung tissue IHC: 25-100 Positive control: Human thyroid cancer Predicted cell location: Cytoplasm
Reactivity:	Human, Mouse
Host:	Rabbit
Isotype:	IgG
Clonality:	Polyclonal
Immunogen:	Synthetic peptide corresponding to a region derived from 101-114 amino acids of human ArfGAP with GTPase domain, ankyrin repeat and PH domain 1
Formulation:	PBS pH7.3, 0.05% NaN <sub>3</sub> , 50% glycerol
Concentration:	lot specific
Purification:	Antigen affinity purification
Conjugation:	Unconjugated
Storage:	Store at -20°C as received.
Stability:	Stable for 12 months from date of receipt.
Gene Name:	ArfGAP with GTPase domain, ankyrin repeat and PH domain 1
Database Link:	<a href="#">NP_001032208</a> <a href="#">Entrez Gene 347722 Mouse</a> <a href="#">Entrez Gene 116987 Human</a> <a href="#">Q9UPQ3</a>



[View online »](#)

**Background:**

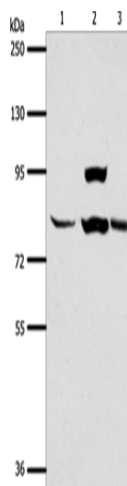
This gene encodes a member of an ADP-ribosylation factor GTPase-activating protein family involved in membrane trafficking and cytoskeleton dynamics. This gene functions as a direct regulator of the adaptor-related protein complex 3 on endosomes. Multiple transcript variants encoding different isoforms have been found for this gene. GTPase-activating protein for ARF1 and; to a lesser extent; ARF5. Directly and specifically regulates the adapter protein 3 (AP-3)-dependent trafficking of proteins in the endosomal-lysosomal system.

**Synonyms:**

AGAP-1; CENTG2; cnt-g2; GGAP1

**Protein Pathways:**

Endocytosis

**Product images:**

Gel: 8%SDS-PAGE

Lysate: 40  $\mu$ g

Lane 1-3: Human liver cancer tissue

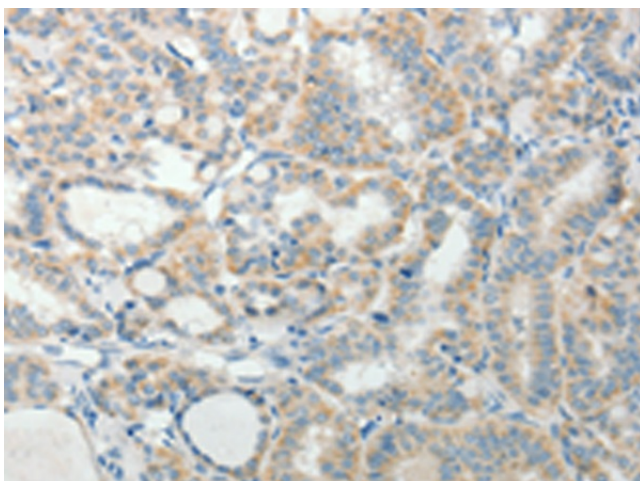
hela cells

mouse lung tissue

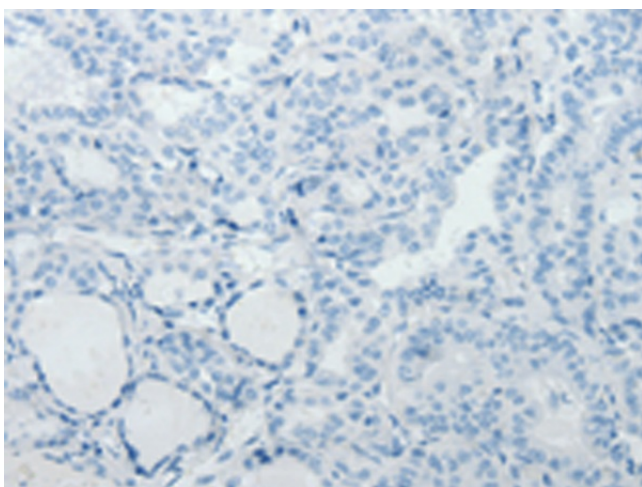
Primary antibody: TA323381 (AGAP1 Antibody) at dilution 1/400

Secondary antibody: Goat anti rabbit IgG at 1/8000 dilution

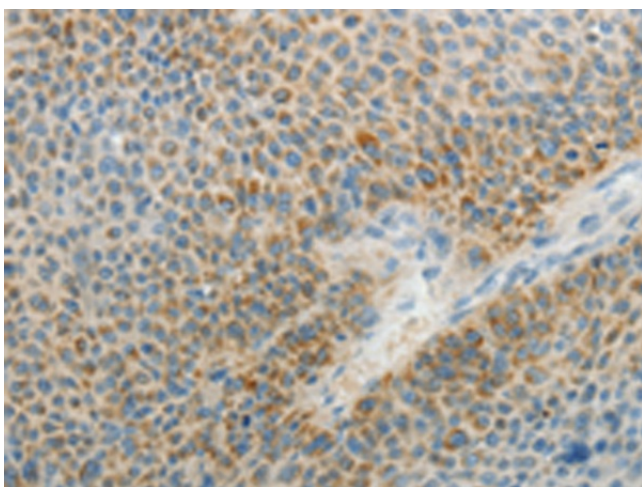
Exposure time: 1 minute



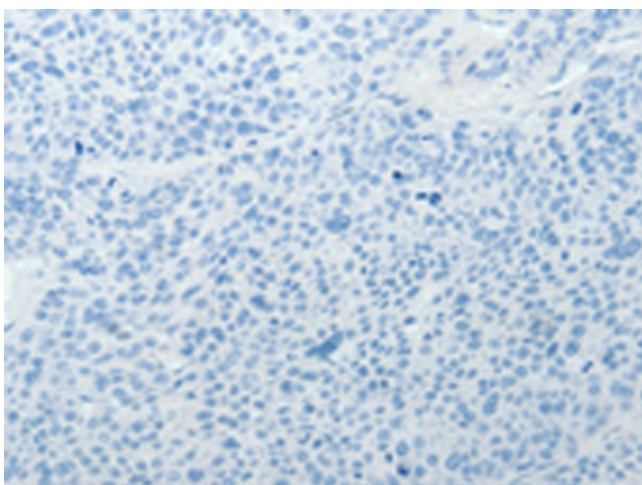
Immunohistochemistry of paraffin-embedded Human thyroid cancer tissue using TA323381 (AGAP1 Antibody) at dilution 1/25 (Original magnification:  $\times$ 200)



Immunohistochemistry of paraffin-embedded Human thyroid cancer tissue using TA323381 (AGAP1 Antibody) at dilution 1/25, treated with synthetic peptide. (Original magnification: x200)



Immunohistochemistry of paraffin-embedded Human liver cancer tissue using TA323381 (AGAP1 Antibody) at dilution 1/25 (Original magnification: x200)



Immunohistochemistry of paraffin-embedded Human liver cancer tissue using TA323381 (AGAP1 Antibody) at dilution 1/25, treated with synthetic peptide. (Original magnification: x200)