

Product datasheet for **TA323379**

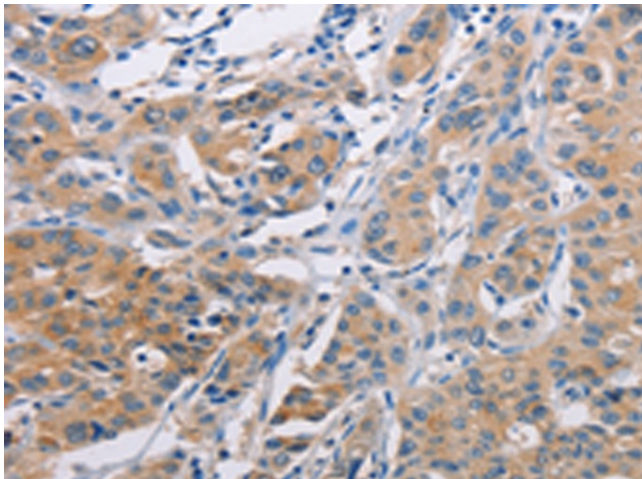
AGBL5 Rabbit Polyclonal Antibody

Product data:

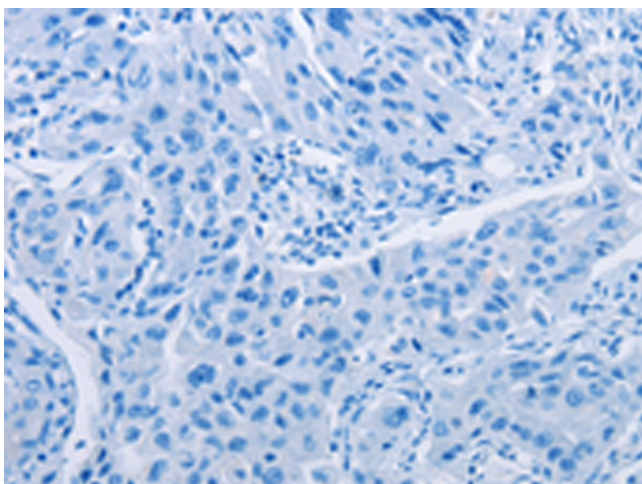
Product Type:	Primary Antibodies
Applications:	IHC
Recommended Dilution:	IHC: 25-100 Positive control: Human lung cancer Predicted cell location: Cytoplasm
Reactivity:	Human
Host:	Rabbit
Isotype:	IgG
Clonality:	Polyclonal
Immunogen:	Fusion protein corresponding to C terminal 300 amino acids of human ATP/GTP binding protein-like 5
Formulation:	PBS pH7.3, 0.05% NaN ₃ , 50% glycerol
Concentration:	lot specific
Purification:	Antigen affinity purification
Conjugation:	Unconjugated
Storage:	Store at -20°C as received.
Stability:	Stable for 12 months from date of receipt.
Gene Name:	ATP/GTP binding protein-like 5
Database Link:	NP_068603 Entrez Gene 60509 Human Q8NDL9
Background:	Metalloprotease that mediates tubulin deglutamylation. Specifically catalyzes the deglutamylation of the branching point glutamate side chains generated by post-translational glutamylation in proteins such as tubulins. In contrast, it is not able to act as a long-chain deglutamylase that shortens long polyglutamate chains, a process catalyzed by AGTBP1/CCP1, AGBL1/CCP4 and AGBL4/CCP6.
Synonyms:	CCP5; RP75



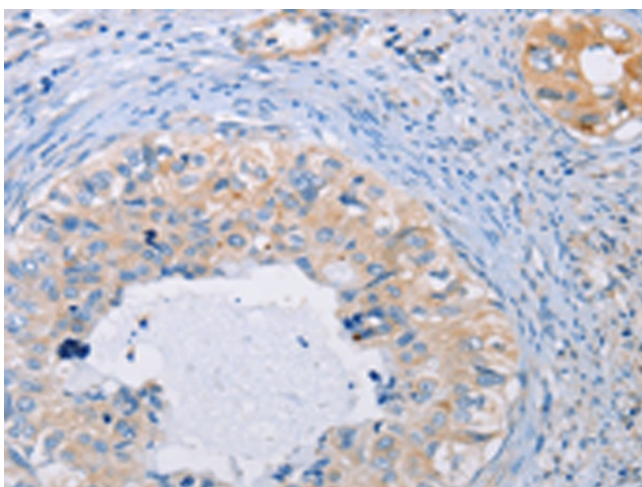
[View online »](#)

Product images:

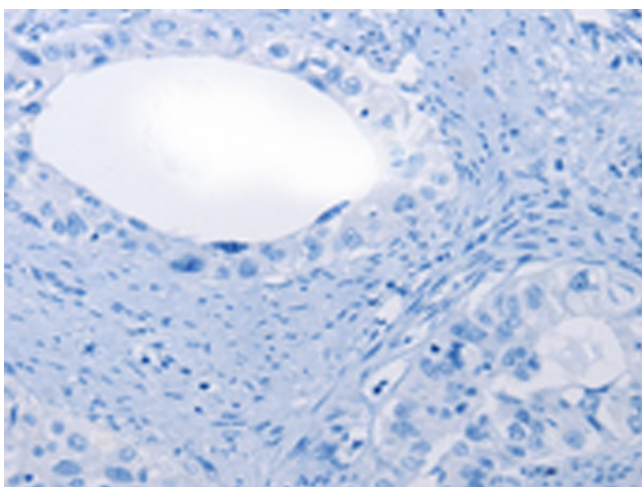
Immunohistochemistry of paraffin-embedded Human lung cancer tissue using TA323379 (AGBL5 Antibody) at dilution 1/30 (Original magnification: $\times 200$)



Immunohistochemistry of paraffin-embedded Human lung cancer tissue using TA323379 (AGBL5 Antibody) at dilution 1/30, treated with fusion protein. (Original magnification: $\times 200$)



Immunohistochemistry of paraffin-embedded Human cervical cancer tissue using TA323379 (AGBL5 Antibody) at dilution 1/30 (Original magnification: $\times 200$)



Immunohistochemistry of paraffin-embedded Human cervical cancer tissue using TA323379 (AGBL5 Antibody) at dilution 1/30, treated with fusion protein. (Original magnification: $\times 200$)