

## Product datasheet for **TA323375**

### IL18BP Rabbit Polyclonal Antibody

#### Product data:

Product Type:	Primary Antibodies
Applications:	IHC, WB
Recommended Dilution:	WB: 500-2000 WB positive control: MCF-7 cell lysate IHC: 50-100 Positive control: Human prostate cancer Predicted cell location: Cytoplasm
Reactivity:	Human
Host:	Rabbit
Isotype:	IgG
Clonality:	Polyclonal
Immunogen:	Fusion protein corresponding to a region derived from 31-195 of Human Interleukin-18-binding protein
Formulation:	PBS pH7.3, 0.05% NaN <sub>3</sub> , 50% glycerol
Concentration:	lot specific
Purification:	Antigen affinity purification
Conjugation:	Unconjugated
Storage:	Store at -20°C as received.
Stability:	Stable for 12 months from date of receipt.
Gene Name:	interleukin 18 binding protein
Database Link:	<a href="#">NP_766631</a> <a href="#">Entrez Gene 10068 Human</a> <a href="#">O95998</a>



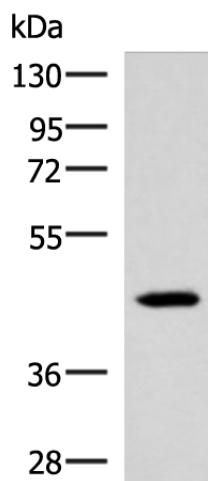
[View online »](#)

**Background:** The protein encoded by this gene functions as an inhibitor of the proinflammatory cytokine; IL18. It binds IL18; prevents the binding of IL18 to its receptor; and thus inhibits IL18-induced IFN-gamma production; resulting in reduced T-helper type 1 immune responses. This protein is constitutively expressed and secreted in mononuclear cells. Elevated level of this protein is detected in the intestinal tissues of patients with Crohn's disease. Alternatively spliced transcript variants encoding different isoforms have been described for this gene.

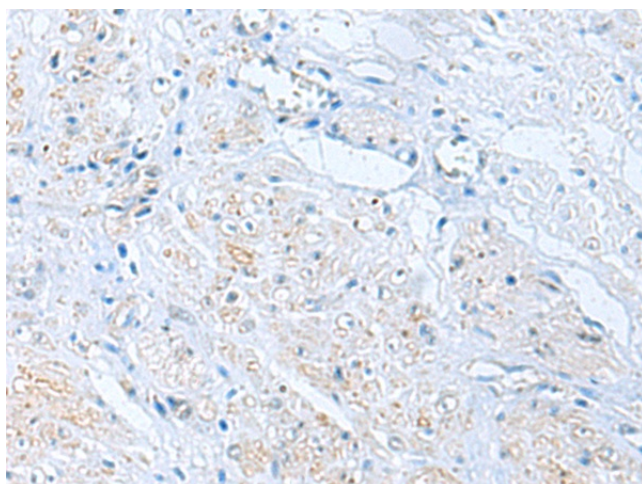
**Synonyms:** IL18BP $\alpha$ ; interleukin 18 binding protein; MC51L-53L-54L homolog gene product; OTTHUMP00000179141; OTTHUMP00000179143; tadekinig-alfa

**Protein Families:** Druggable Genome, Secreted Protein

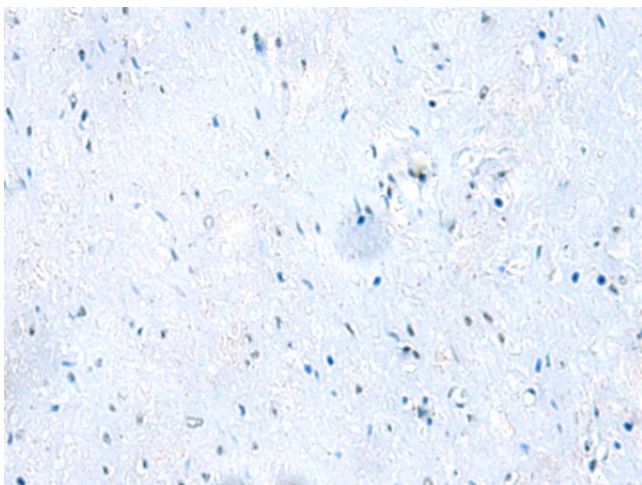
### Product images:



Gel: 8%SDS-PAGE  
Lysate: 40  $\mu$ g  
Lane: MCF-7 cell lysate  
Primary antibody: TA323375 (IL18BP Antibody) at dilution 1/900  
Secondary antibody: Goat anti rabbit IgG at 1/5000 dilution  
Exposure time: 10 seconds



Immunohistochemistry of paraffin-embedded Human prostate cancer tissue using TA323375 (IL18BP Antibody) at dilution 1/65 (Original magnification:  $\times$ 200)



Immunohistochemistry of paraffin-embedded Human prostate cancer tissue using TA323375 (IL18BP Antibody) at dilution 1/65, treated with fusion protein. (Original magnification: ×200)