

Product datasheet for **TA323372S**

PRMT5 Rabbit Polyclonal Antibody

Product data:

Product Type:	Primary Antibodies
Applications:	IHC, WB
Recommended Dilution:	WB: 200-1000 WB positive control: K562, hela and 293T cells IHC: 15-50 Positive control: Human breast cancer Predicted cell location: Cytoplasm
Reactivity:	Human, Mouse, Rat
Host:	Rabbit
Isotype:	IgG
Clonality:	Polyclonal
Immunogen:	Synthetic peptide peptide corresponding to a region derived from 622-637 amino acids of human protein arginine methyltransferase 5
Formulation:	PBS pH7.3, 0.05% NaN ₃ , 50% glycerol
Purification:	Antigen affinity purification
Conjugation:	Unconjugated
Storage:	Store at -20°C as received.
Stability:	Stable for 12 months from date of receipt.
Predicted Protein Size:	71 kDa
Gene Name:	protein arginine methyltransferase 5
Database Link:	NP_001034708 Entrez Gene 27374 Mouse Entrez Gene 364382 Rat Entrez Gene 10419 Human O14744



[View online »](#)

Background:

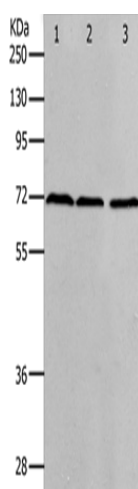
Protein arginine methyltransferase 5 has been shown to interact with WD repeat-containing protein 77; CLNS1A; Janus kinase 2; SNRPD3 and SUPT5H. Arginine methyltransferase that can both catalyze the formation of omega-N monomethylarginine (MMA) and symmetrical dimethylarginine (sDMA); with a preference for the formation of MMA. Specifically mediates the symmetrical dimethylation of arginine residues in the small nuclear ribonucleoproteins Sm D1 (SNRPD1) and Sm D3 (SNRPD3); such methylation being required for the assembly and biogenesis of snRNP core particles. Methylates SUPT5H. Mono- and dimethylates arginine residues of myelin basic protein (MBP) in vitro. Plays a role in the assembly of snRNP core particles. May play a role in cytokine-activated transduction pathways. Negatively regulates cyclin E1 promoter activity and cellular proliferation.

Synonyms:

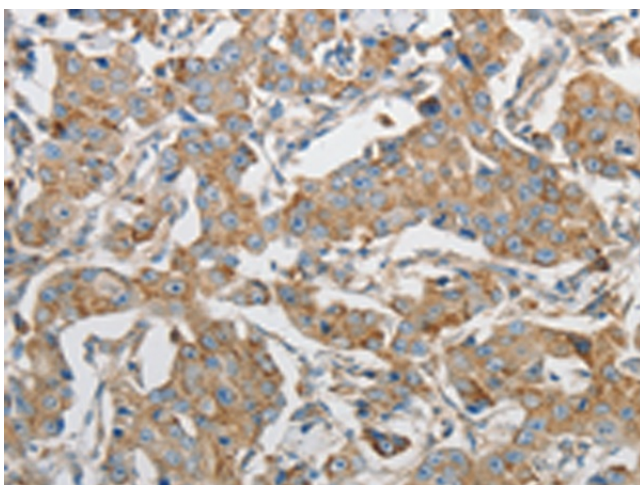
HRMT1L5; IBP72; JBP1; SKB1; SKB1Hs

Protein Families:

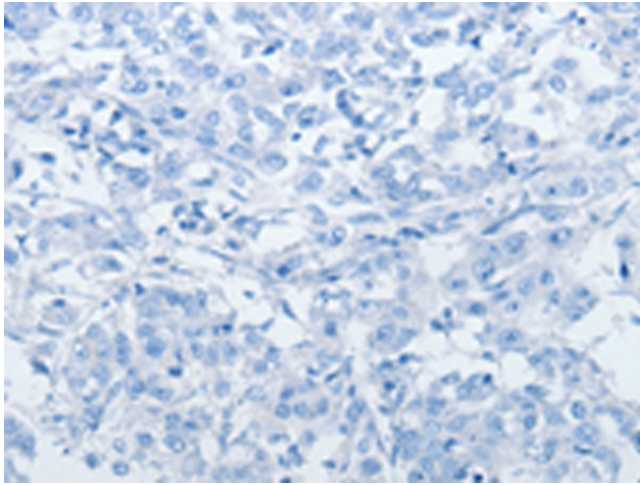
Stem cell - Pluripotency

Product images:

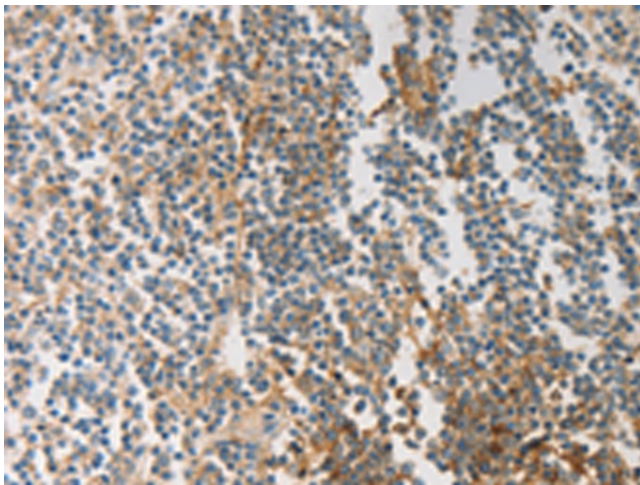
Gel: 10%SDS-PAGE
Lysate: 40 µg
Lane 1-3: K562 cells
hela cells
293T cells
Primary antibody: [TA323372] (PRMT5 Antibody)
at dilution 1/400
Secondary antibody: Goat anti rabbit IgG at
1/8000 dilution
Exposure time: 2 minutes



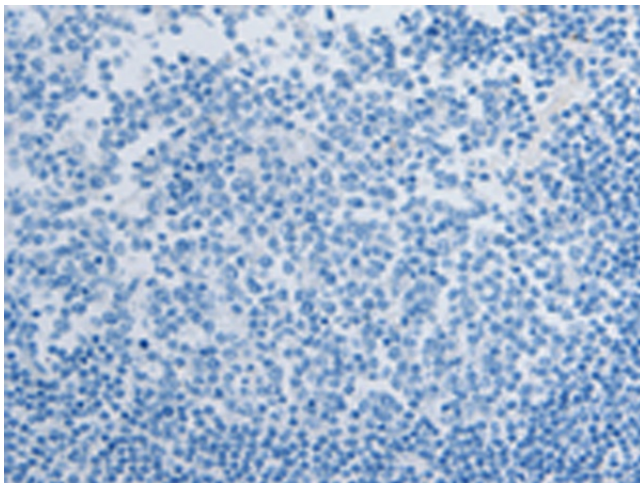
Immunohistochemistry of paraffin-embedded
Human breast cancer tissue using [TA323372]
(PRMT5 Antibody) at dilution 1/20 (Original
magnification: x200)



Immunohistochemistry of paraffin-embedded Human breast cancer tissue using [TA323372] (PRMT5 Antibody) at dilution 1/20, treated with synthetic peptide. (Original magnification: $\times 200$)



Immunohistochemistry of paraffin-embedded Human tonsil tissue using [TA323372] (PRMT5 Antibody) at dilution 1/20 (Original magnification: $\times 200$)



Immunohistochemistry of paraffin-embedded Human tonsil tissue using [TA323372] (PRMT5 Antibody) at dilution 1/20, treated with synthetic peptide. (Original magnification: $\times 200$)