

## Product datasheet for **TA323371S**

### SPAG8 Rabbit Polyclonal Antibody

#### Product data:

Product Type:	Primary Antibodies
Applications:	IHC
Recommended Dilution:	IHC: 25-100 Positive control: Human cervical cancer Predicted cell location: Cytoplasm
Reactivity:	Human
Host:	Rabbit
Isotype:	IgG
Clonality:	Polyclonal
Immunogen:	Fusion protein corresponding to a region derived from 205-426 amino acids of human sperm associated antigen 8
Formulation:	PBS pH7.3, 0.05% NaN <sub>3</sub> , 50% glycerol
Purification:	Antigen affinity purification
Conjugation:	Unconjugated
Storage:	Store at -20°C as received.
Stability:	Stable for 12 months from date of receipt.
Gene Name:	sperm associated antigen 8
Database Link:	<a href="#">NP_036568</a> <a href="#">Entrez Gene 26206 Human</a> <a href="#">Q99932</a>



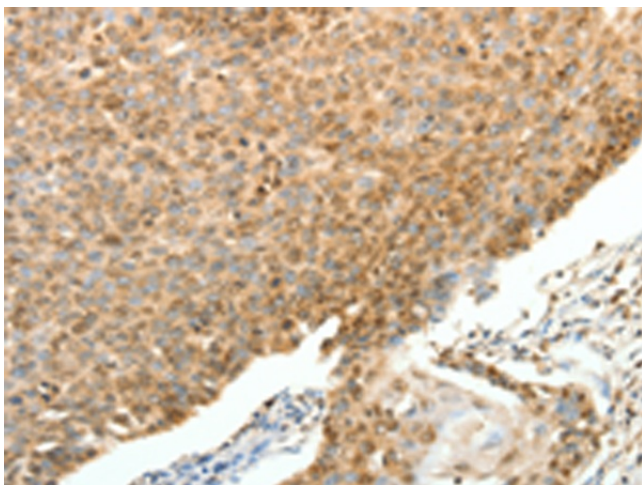
[View online »](#)

**Background:**

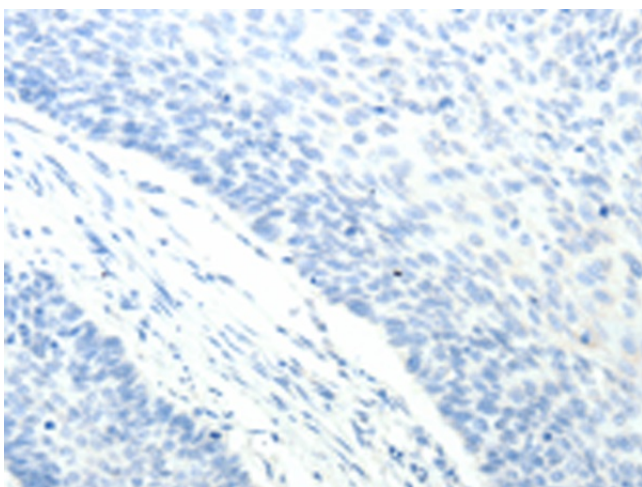
The correlation of anti-sperm antibodies with cases of unexplained infertility implicates a role for these antibodies in blocking fertilization. Improved diagnosis and treatment of immunologic infertility; as well as identification of proteins for targeted contraception; are dependent on the identification and characterization of relevant sperm antigens. The protein encoded by this gene is recognized by sperm agglutinating antibodies from an infertile woman. This protein is localized in germ cells of the testis at all stages of spermatogenesis and is localized to the acrosomal region of mature spermatozoa. This protein interacts with ACT (activator of CREM in testis) and may play a role in CREM (cAMP response element modulator)-ACT-mediated gene transcription during spermatogenesis. This protein may also play a role in spermatogenesis by regulating microtubule formation and cell division. Alternatively spliced variants that encode different protein isoforms have been described but the full-length sequences of only two have been determined.

**Synonyms:**

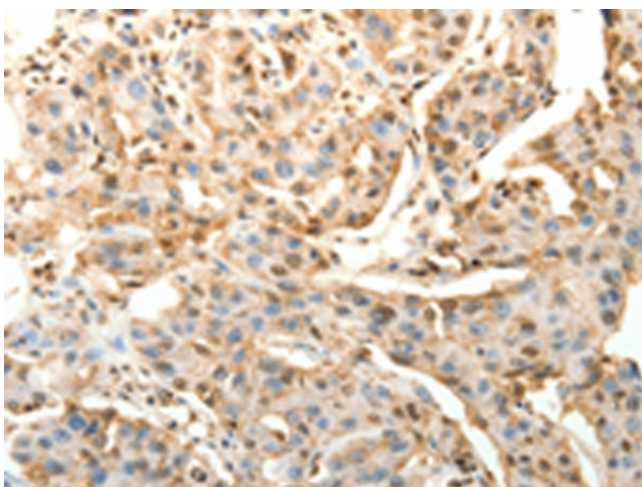
BS-84; HSD-1; hSMP-1; MGC26201; OTTHUMP00000021352; SMP1; SPAG3; sperm associated antigen 8; sperm membrane protein 1

**Product images:**

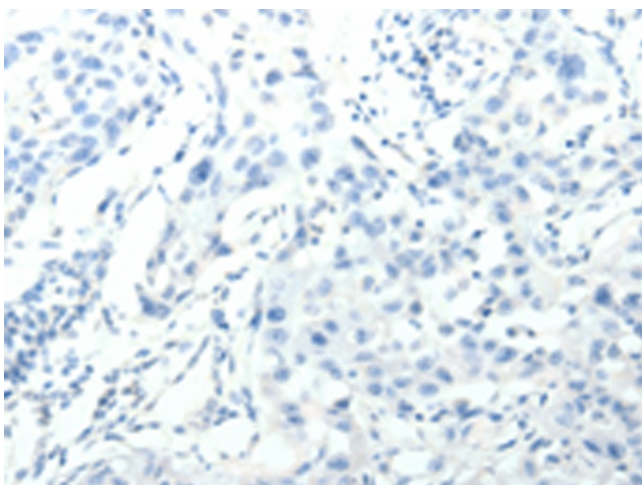
Immunohistochemistry of paraffin-embedded Human cervical cancer tissue using [TA323371] (SPAG8 Antibody) at dilution 1/25 (Original magnification: ×200)



Immunohistochemistry of paraffin-embedded Human cervical cancer tissue using [TA323371] (SPAG8 Antibody) at dilution 1/25, treated with fusion protein. (Original magnification:  $\times 200$ )



Immunohistochemistry of paraffin-embedded Human lung cancer tissue using [TA323371] (SPAG8 Antibody) at dilution 1/25 (Original magnification:  $\times 200$ )



Immunohistochemistry of paraffin-embedded Human lung cancer tissue using [TA323371] (SPAG8 Antibody) at dilution 1/25, treated with fusion protein. (Original magnification:  $\times 200$ )