

Product datasheet for **TA323369**

MAP2 Rabbit Polyclonal Antibody

Product data:

Product Type:	Primary Antibodies
Applications:	IHC
Recommended Dilution:	IHC: 25-100 Positive control: Human brain Predicted cell location: Cytoplasm, Nucleus
Reactivity:	Human, Mouse, Rat
Host:	Rabbit
Isotype:	IgG
Clonality:	Polyclonal
Immunogen:	Synthetic peptide corresponding to a region derived from 42-45 amino acids of human microtubule-associated protein 2
Formulation:	PBS pH7.3, 0.05% NaN ₃ , 50% glycerol
Concentration:	lot specific
Purification:	Antigen affinity purification
Conjugation:	Unconjugated
Storage:	Store at -20°C as received.
Stability:	Stable for 12 months from date of receipt.
Gene Name:	microtubule associated protein 2
Database Link:	NP_114034 Entrez Gene 17756 Mouse Entrez Gene 25595 Rat Entrez Gene 4133 Human P11137
Background:	This gene encodes a protein that belongs to the microtubule-associated protein family. The proteins of this family are thought to be involved in microtubule assembly; which is an essential step in neurogenesis. The products of similar genes in rat and mouse are neuron-specific cytoskeletal proteins that are enriched in dendrites; implicating a role in determining and stabilizing dendritic shape during neuron development. A number of alternatively spliced variants encoding distinct isoforms have been described.

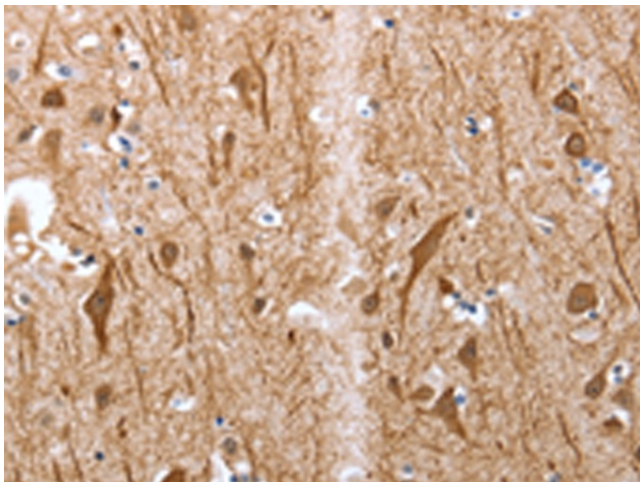


[View online »](#)

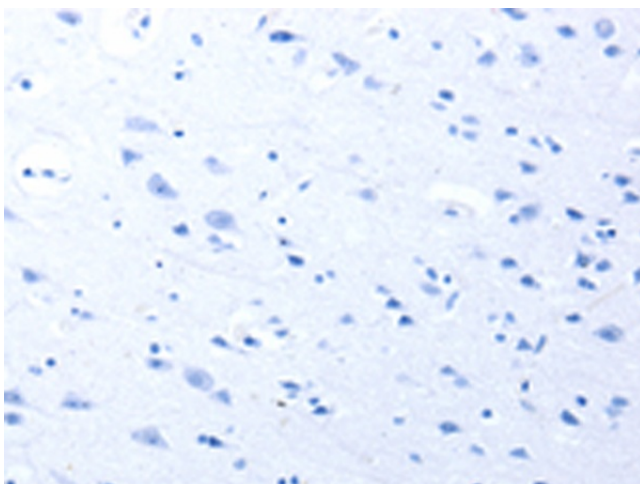
Synonyms: DKFZp686I2148; MAP2A; MAP2B; MAP2C; microtubule-associated protein 2; OTTHUMP00000163916

Protein Families: Adult stem cells, Druggable Genome, ES Cell Differentiation/IPS

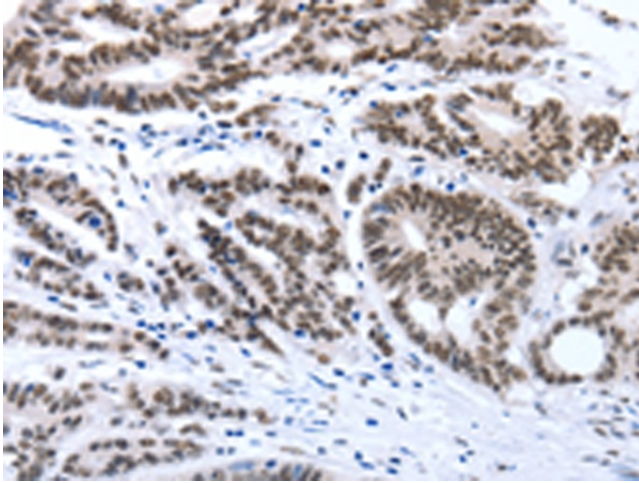
Product images:



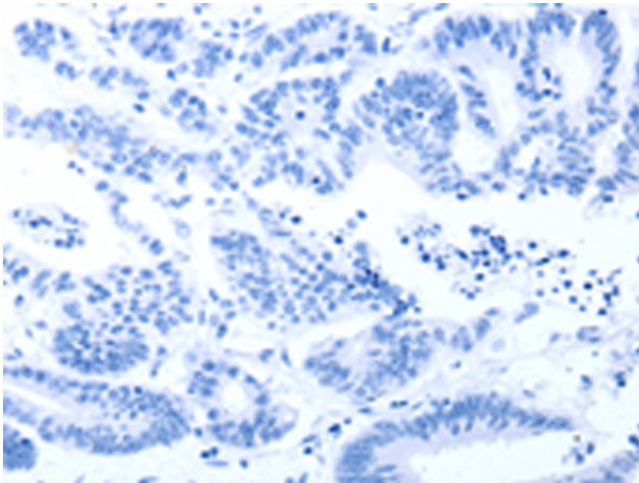
Immunohistochemistry of paraffin-embedded Human brain tissue using TA323369 (Map2 Antibody) at dilution 1/25 (Original magnification: ×200)



Immunohistochemistry of paraffin-embedded Human brain tissue using TA323369 (Map2 Antibody) at dilution 1/25, treated with synthetic peptide. (Original magnification: ×200)



Immunohistochemistry of paraffin-embedded Human colon cancer tissue using TA323369 (Map2 Antibody) at dilution 1/25 (Original magnification: $\times 200$)



Immunohistochemistry of paraffin-embedded Human colon cancer tissue using TA323369 (Map2 Antibody) at dilution 1/25, treated with synthetic peptide. (Original magnification: $\times 200$)