

Product datasheet for **TA323366S**

CD151 Rabbit Polyclonal Antibody

Product data:

Product Type:	Primary Antibodies
Applications:	IHC
Recommended Dilution:	IHC: 50-200 Positive control: Human liver cancer Predicted cell location: Cytoplasm, Cell membrane
Reactivity:	Human, Mouse, Rat
Host:	Rabbit
Isotype:	IgG
Clonality:	Polyclonal
Immunogen:	Fusion protein corresponding to a region derived from 113-221 amino acids of Human Cluster of Differentiation 151 antigen
Formulation:	PBS pH7.3, 0.05% NaN ₃ , 50% glycerol
Purification:	Antigen affinity purification
Conjugation:	Unconjugated
Storage:	Store at -20°C as received.
Stability:	Stable for 12 months from date of receipt.
Gene Name:	CD151 molecule (Raph blood group)
Database Link:	NP_620599 Entrez Gene 12476 Mouse Entrez Gene 64315 Rat Entrez Gene 977 Human P48509
Background:	The protein encoded by this gene is a member of the transmembrane 4 superfamily; also known as the tetraspanin family. Most of these members are cell-surface proteins that are characterized by the presence of four hydrophobic domains. The proteins mediate signal transduction events that play a role in the regulation of cell development; activation; growth and motility. This encoded protein is a cell surface glycoprotein that is known to complex with integrins and other transmembrane 4 superfamily proteins. It is involved in cellular processes including cell adhesion and may regulate integrin trafficking and/or function. This protein enhances cell motility; invasion and metastasis of cancer cells. Multiple alternatively spliced transcript variants that encode the same protein have been described for this gene.

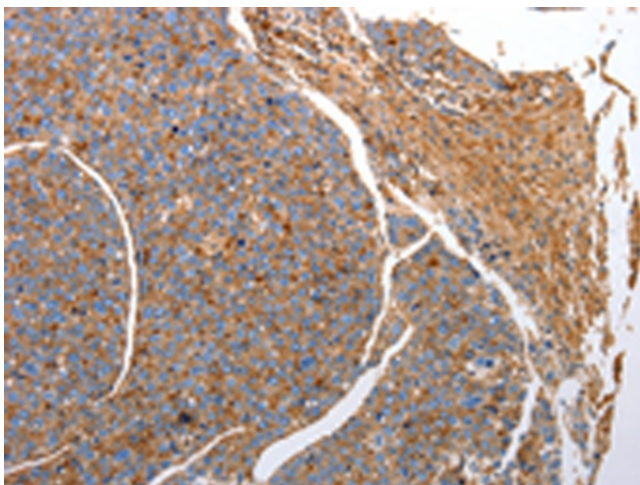


[View online »](#)

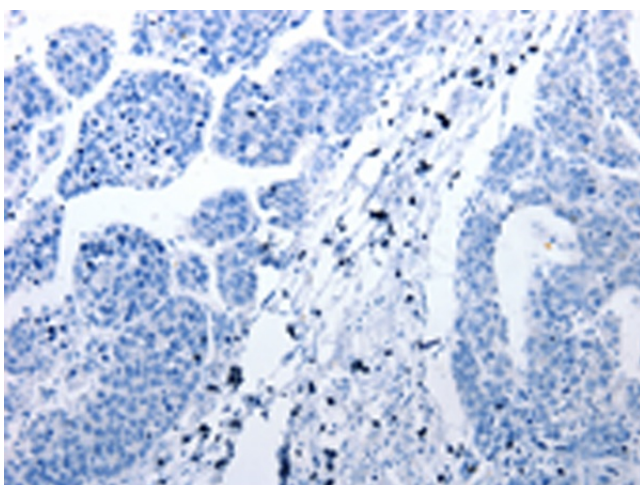
Synonyms: GP27; MER2; PETA-3; RAPH; SFA1; TSPAN24

Protein Families: Druggable Genome, Transmembrane

Product images:



Immunohistochemistry of paraffin-embedded Human liver cancer tissue using [TA323366] (CD151 Antibody) at dilution 1/25 (Original magnification: $\times 200$)



Immunohistochemistry of paraffin-embedded Human liver cancer tissue using [TA323366] (CD151 Antibody) at dilution 1/25, treated with fusion protein. (Original magnification: $\times 200$)