

Product datasheet for **TA323365S**

15 Lipoxygenase 2 (ALOX15B) Rabbit Polyclonal Antibody

Product data:

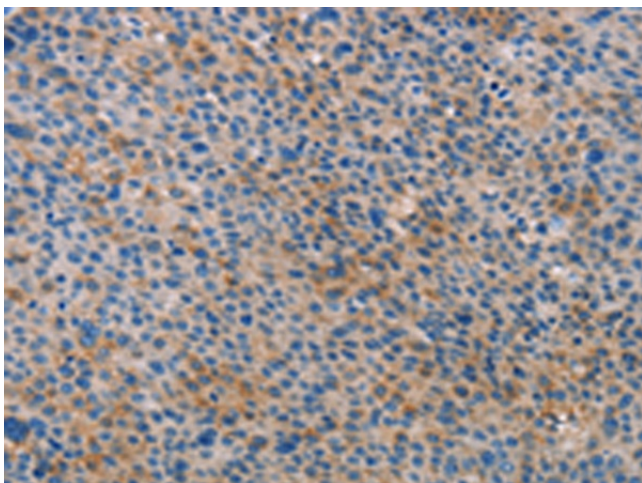
Product Type:	Primary Antibodies
Applications:	IHC
Recommended Dilution:	IHC: 15-50 Positive control: Human liver cancer Predicted cell location: Cytoplasm
Reactivity:	Human
Host:	Rabbit
Isotype:	IgG
Clonality:	Polyclonal
Immunogen:	Fusion protein corresponding to a region derived from 30-351 amino acids of human arachidonate 15-lipoxygenase, type B
Formulation:	PBS pH7.3, 0.05% NaN ₃ , 50% glycerol
Purification:	Antigen affinity purification
Conjugation:	Unconjugated
Storage:	Store at -20°C as received.
Stability:	Stable for 12 months from date of receipt.
Gene Name:	arachidonate 15-lipoxygenase, type B
Database Link:	NP_001132 Entrez Gene 247 Human O15296
Background:	This gene encodes a member of the lipoxygenase family of structurally related nonheme iron dioxygenases involved in the production of fatty acid hydroperoxides. The encoded protein converts arachidonic acid exclusively to 15S-hydroperoxyeicosatetraenoic acid, while metabolizing linoleic acid less effectively. This gene is located in a cluster of related genes and a pseudogene that spans approximately 100 kilobases on the short arm of chromosome 17. Alternatively spliced transcript variants encoding different isoforms have been described.
Synonyms:	15-LOX-2
Protein Families:	Druggable Genome



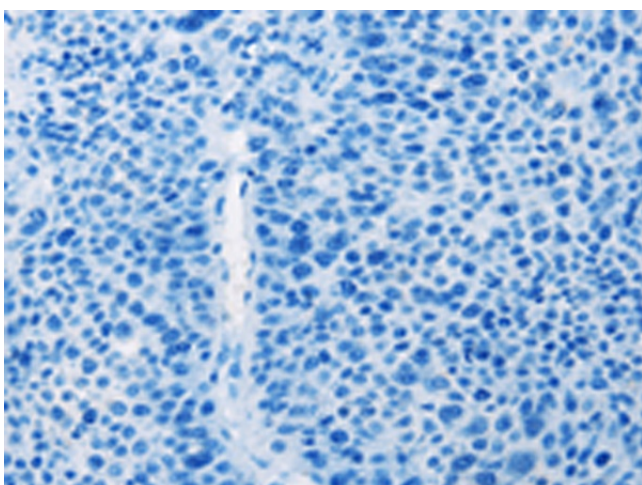
[View online »](#)

Protein Pathways: Arachidonic acid metabolism, Metabolic pathways

Product images:



Immunohistochemistry of paraffin-embedded Human liver cancer tissue using [TA323365] (ALOX15B Antibody) at dilution 1/15 (Original magnification: $\times 200$)



Immunohistochemistry of paraffin-embedded Human liver cancer tissue using [TA323365] (ALOX15B Antibody) at dilution 1/15, treated with fusion protein. (Original magnification: $\times 200$)