

## Product datasheet for **TA323365**

### 15 Lipoxygenase 2 (ALOX15B) Rabbit Polyclonal Antibody

#### Product data:

Product Type:	Primary Antibodies
Applications:	IHC
Recommended Dilution:	IHC: 15-50 Positive control: Human liver cancer Predicted cell location: Cytoplasm
Reactivity:	Human
Host:	Rabbit
Isotype:	IgG
Clonality:	Polyclonal
Immunogen:	Fusion protein corresponding to a region derived from 30-351 amino acids of human arachidonate 15-lipoxygenase, type B
Formulation:	PBS pH7.3, 0.05% NaN <sub>3</sub> , 50% glycerol
Concentration:	lot specific
Purification:	Antigen affinity purification
Conjugation:	Unconjugated
Storage:	Store at -20°C as received.
Stability:	Stable for 12 months from date of receipt.
Gene Name:	arachidonate 15-lipoxygenase, type B
Database Link:	<a href="#">NP_001132</a> <a href="#">Entrez Gene 247 Human</a> <a href="#">O15296</a>
Background:	This gene encodes a member of the lipoxygenase family of structurally related nonheme iron dioxygenases involved in the production of fatty acid hydroperoxides. The encoded protein converts arachidonic acid exclusively to 15S-hydroperoxyeicosatetraenoic acid, while metabolizing linoleic acid less effectively. This gene is located in a cluster of related genes and a pseudogene that spans approximately 100 kilobases on the short arm of chromosome 17. Alternatively spliced transcript variants encoding different isoforms have been described.
Synonyms:	15-LOX-2

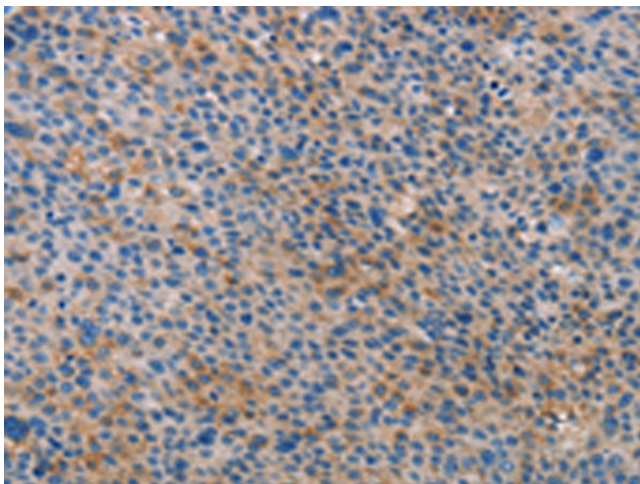


[View online »](#)

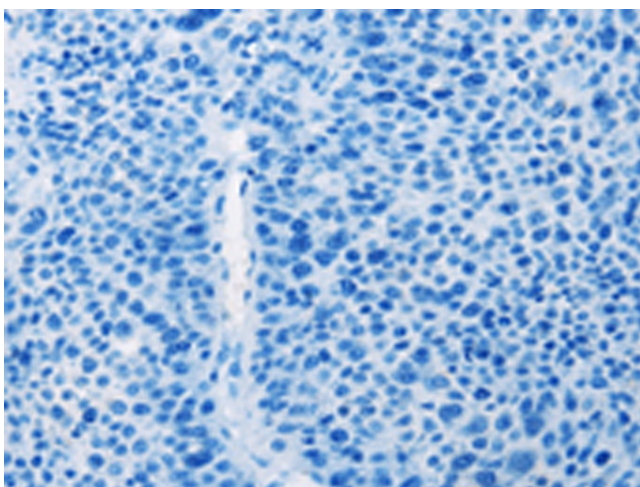
Protein Families: Druggable Genome

Protein Pathways: Arachidonic acid metabolism, Metabolic pathways

**Product images:**



Immunohistochemistry of paraffin-embedded Human liver cancer tissue using TA323365 (ALOX15B Antibody) at dilution 1/15 (Original magnification:  $\times 200$ )



Immunohistochemistry of paraffin-embedded Human liver cancer tissue using TA323365 (ALOX15B Antibody) at dilution 1/15, treated with fusion protein. (Original magnification:  $\times 200$ )