

Product datasheet for **TA323364S**

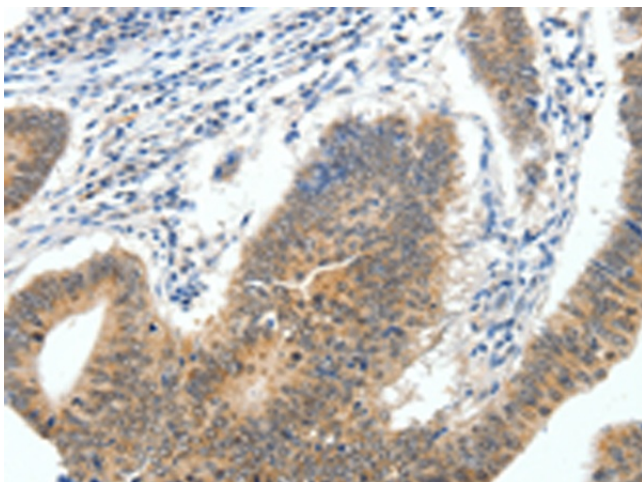
ECE2 (EEF1AKMT4) Rabbit Polyclonal Antibody

Product data:

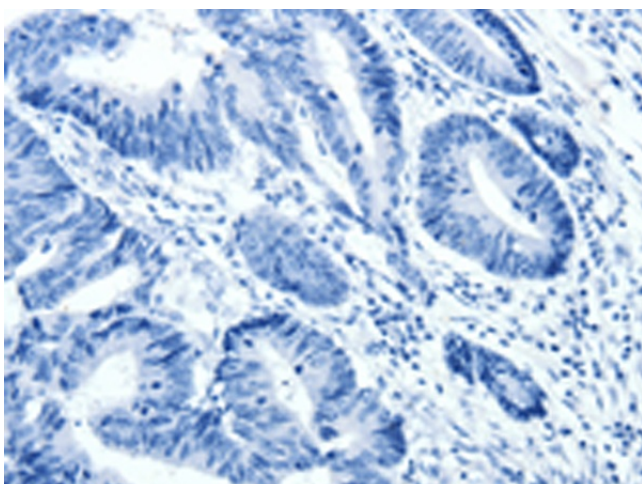
Product Type:	Primary Antibodies
Applications:	IHC
Recommended Dilution:	IHC: 50-200 Positive control: Human colon cancer Predicted cell location: Cytoplasm
Reactivity:	Human, Mouse
Host:	Rabbit
Isotype:	IgG
Clonality:	Polyclonal
Immunogen:	Fusion protein corresponding to a region derived from 25-235 amino acids of human endothelin converting enzyme 2
Formulation:	PBS pH7.3, 0.05% NaN ₃ , 50% glycerol
Purification:	Antigen affinity purification
Conjugation:	Unconjugated
Storage:	Store at -20°C as received.
Stability:	Stable for 12 months from date of receipt.
Gene Name:	endothelin converting enzyme 2
Database Link:	NP_115707 Entrez Gene 110599564 Entrez Gene 9718 Human P0DPD6
Background:	Endothelin-converting enzymes; such as ECE2 (EC 3.4.24.71); are type II metalloproteases that generate functionally pleiotropic members of the endothelin vasoactive peptide family. It converts big endothelin-1 to endothelin-1. Also involved in the processing of various neuroendocrine peptides; including neurotensin; angiotensin I; substance P; proenkephalin-derived peptides; and prodynorphin-derived peptides. May limit beta-amyloid peptide accumulation in brain. May also have methyltransferase activity.
Synonyms:	KIAA0604; MGC2408; MGC17664; MGC78487



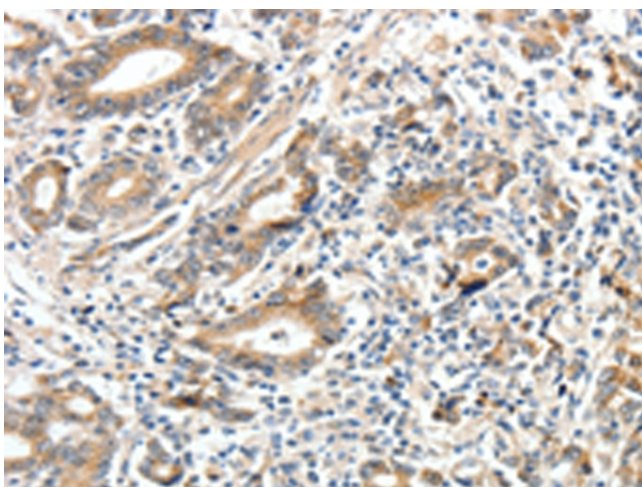
[View online »](#)

Product images:

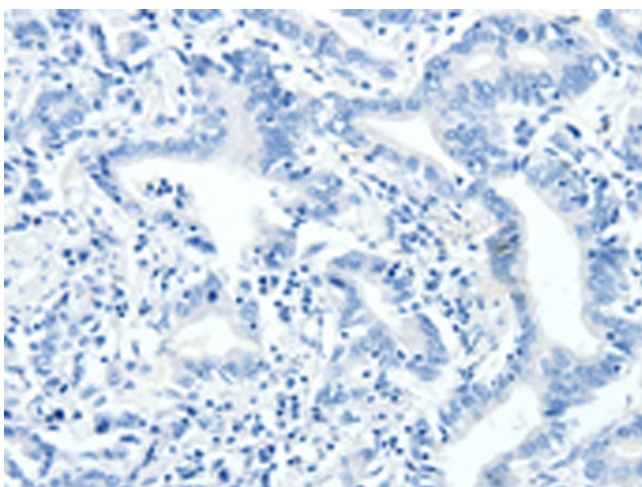
Immunohistochemistry of paraffin-embedded Human colon cancer tissue using [TA323364] (EEF1AKMT4 Antibody) at dilution 1/40 (Original magnification: $\times 200$)



Immunohistochemistry of paraffin-embedded Human colon cancer tissue using [TA323364] (EEF1AKMT4 Antibody) at dilution 1/40, treated with fusion protein. (Original magnification: $\times 200$)



Immunohistochemistry of paraffin-embedded Human gastric cancer tissue using [TA323364] (EEF1AKMT4 Antibody) at dilution 1/40 (Original magnification: $\times 200$)



Immunohistochemistry of paraffin-embedded Human gastric cancer tissue using [TA323364] (EEF1AKMT4 Antibody) at dilution 1/40, treated with fusion protein. (Original magnification: $\times 200$)