

Product datasheet for **TA323363S**

PAP2D (PLPPR5) Rabbit Polyclonal Antibody

Product data:

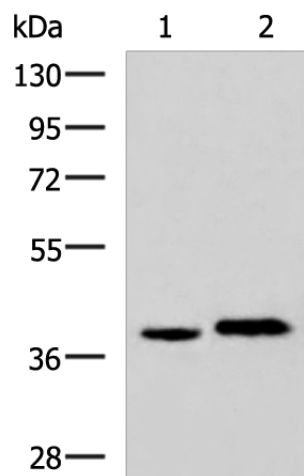
Product Type:	Primary Antibodies
Applications:	IHC, WB
Recommended Dilution:	WB: 500-2000 WB positive control: HepG2 and A172 cell lysates IHC: 25-50 Positive control: Human lung cancer Predicted cell location: Cytoplasm
Reactivity:	Human, Mouse
Host:	Rabbit
Isotype:	IgG
Clonality:	Polyclonal
Immunogen:	Synthetic peptide corresponding to a region derived from 48-61 amino acids of Human lipid phosphate phosphatase-related protein type 5
Formulation:	PBS pH7.3, 0.05% NaN ₃ , 50% glycerol
Purification:	Antigen affinity purification
Conjugation:	Unconjugated
Storage:	Store at -20°C as received.
Stability:	Stable for 12 months from date of receipt.
Gene Name:	phospholipid phosphatase related 5
Database Link:	NP_001010861 Entrez Gene 75769 Mouse Entrez Gene 163404 Human Q32ZL2
Background:	The protein encoded by this gene is a type 2 member of the phosphatidic acid phosphatase (PAP) family. All type 2 members of this protein family contain 6 transmembrane regions; and a consensus N-glycosylation site. PAPs convert phosphatidic acid to diacylglycerol; and function in de novo synthesis of glycerolipids as well as in receptor-activated signal transduction mediated by phospholipase D. Alternate transcriptional splice variants; encoding different isoforms; have been characterized.


[View online »](#)

Synonyms: PAP2; PAP2D; PRG5

Protein Families: Transmembrane

Product images:



Gel: 8%SDS-PAGE

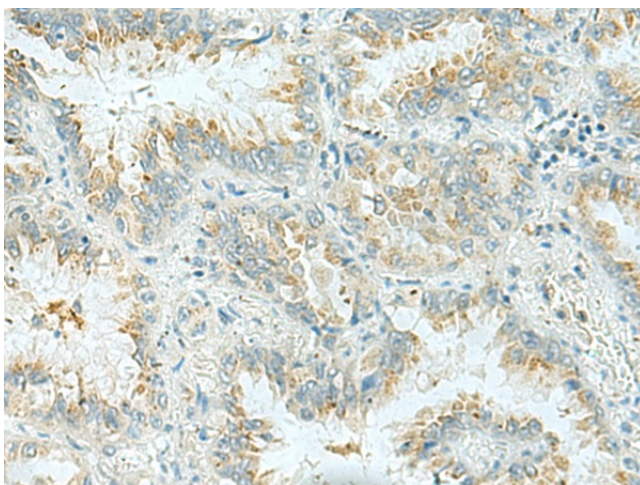
Lysate: 40 µg

Lane 1-2: HepG2 and A172 cell lysates

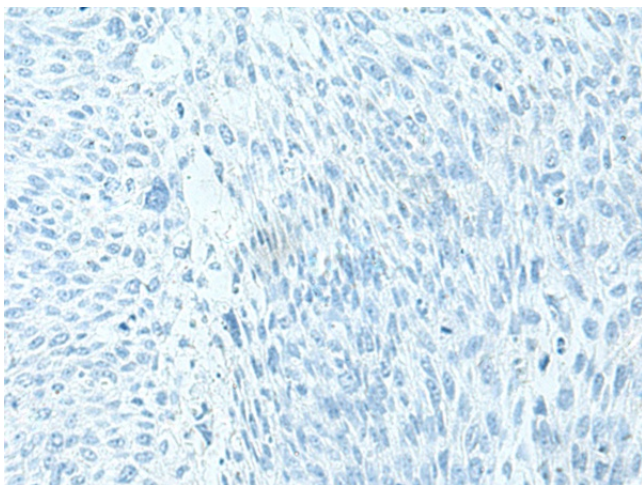
Primary antibody: [TA323363] (PLPPR5 Antibody) at dilution 1/500

Secondary antibody: Goat anti rabbit IgG at 1/5000 dilution

Exposure time: 30 seconds



Immunohistochemistry of paraffin-embedded Human lung cancer tissue using [TA323363] (PLPPR5 Antibody) at dilution 1/30 (Original magnification: ×200)



Immunohistochemistry of paraffin-embedded Human lung cancer tissue using [TA323363] (PLPPR5 Antibody) at dilution 1/30, treated with synthetic peptide. (Original magnification: $\times 200$)