

## Product datasheet for **TA323363**

### PAP2D (PLPPR5) Rabbit Polyclonal Antibody

#### Product data:

Product Type:	Primary Antibodies
Applications:	IHC, WB
Recommended Dilution:	WB: 500-2000 WB positive control: HepG2 and A172 cell lysates IHC: 25-50 Positive control: Human lung cancer Predicted cell location: Cytoplasm
Reactivity:	Human, Mouse
Host:	Rabbit
Isotype:	IgG
Clonality:	Polyclonal
Immunogen:	Synthetic peptide corresponding to a region derived from 48-61 amino acids of Human lipid phosphate phosphatase-related protein type 5
Formulation:	PBS pH7.3, 0.05% NaN <sub>3</sub> , 50% glycerol
Concentration:	lot specific
Purification:	Antigen affinity purification
Conjugation:	Unconjugated
Storage:	Store at -20°C as received.
Stability:	Stable for 12 months from date of receipt.
Gene Name:	phospholipid phosphatase related 5
Database Link:	<a href="#">NP_001010861</a> <a href="#">Entrez Gene 75769 Mouse</a> <a href="#">Entrez Gene 163404 Human</a> <a href="#">Q32ZL2</a>



[View online »](#)

**Background:**

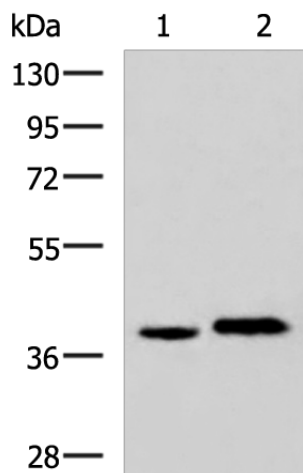
The protein encoded by this gene is a type 2 member of the phosphatidic acid phosphatase (PAP) family. All type 2 members of this protein family contain 6 transmembrane regions; and a consensus N-glycosylation site. PAPs convert phosphatidic acid to diacylglycerol; and function in de novo synthesis of glycerolipids as well as in receptor-activated signal transduction mediated by phospholipase D. Alternate transcriptional splice variants; encoding different isoforms; have been characterized.

**Synonyms:**

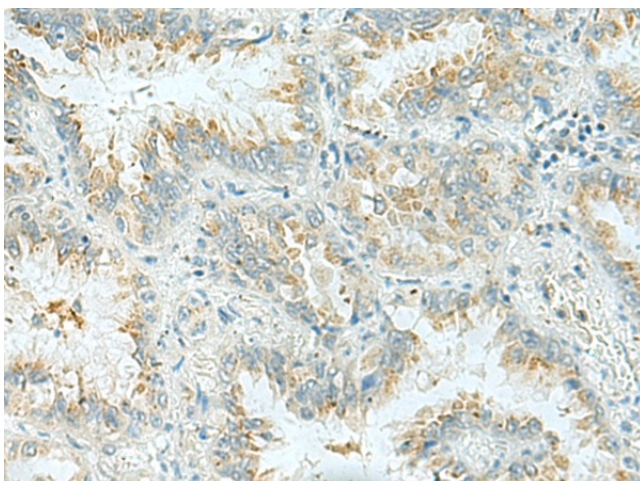
PAP2; PAP2D; PRG5

**Protein Families:**

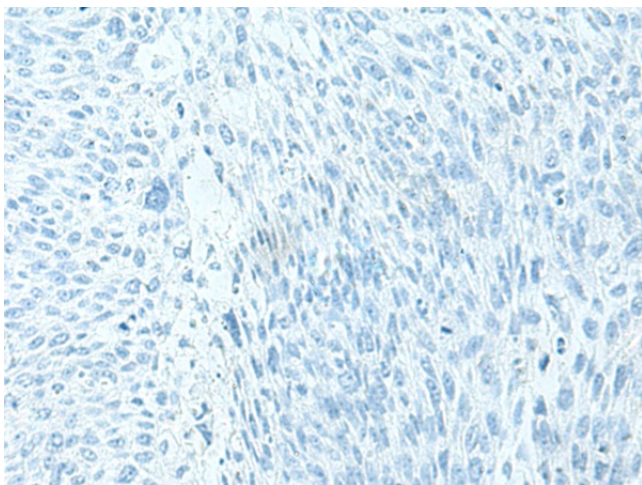
Transmembrane

**Product images:**


Gel: 8%SDS-PAGE  
Lysate: 40 µg  
Lane 1-2: HepG2 and A172 cell lysates  
Primary antibody: TA323363 (PLPPR5 Antibody) at dilution 1/500  
Secondary antibody: Goat anti rabbit IgG at 1/5000 dilution  
Exposure time: 30 seconds



Immunohistochemistry of paraffin-embedded Human lung cancer tissue using TA323363 (PLPPR5 Antibody) at dilution 1/30 (Original magnification: ×200)



Immunohistochemistry of paraffin-embedded Human lung cancer tissue using TA323363 (PLPPR5 Antibody) at dilution 1/30, treated with synthetic peptide. (Original magnification: ×200)