

Product datasheet for **TA323362**

PAP2D (PLPPR5) Rabbit Polyclonal Antibody

Product data:

Product Type:	Primary Antibodies
Applications:	IHC, WB
Recommended Dilution:	WB: 1000-5000 WB positive control: HepG2 cell lysate IHC: 100-200 Positive control: Human cervical cancer Predicted cell location: Cytoplasm
Reactivity:	Human, Mouse
Host:	Rabbit
Isotype:	IgG
Clonality:	Polyclonal
Immunogen:	Synthetic peptide corresponding to a region derived from 58-62 amino acids of Human lipid phosphate phosphatase-related protein type 5
Formulation:	PBS pH7.3, 0.05% NaN ₃ , 50% glycerol
Concentration:	lot specific
Purification:	Antigen affinity purification
Conjugation:	Unconjugated
Storage:	Store at -20°C as received.
Stability:	Stable for 12 months from date of receipt.
Predicted Protein Size:	35 kDa
Gene Name:	phospholipid phosphatase related 5
Database Link:	NP_001032394 Entrez Gene 75769 Mouse Entrez Gene 163404 Human Q32ZL2



[View online »](#)

Background:

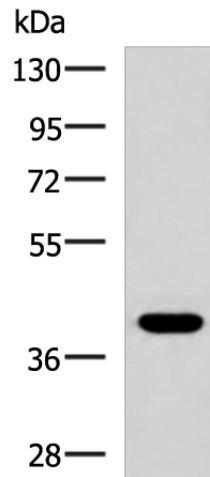
The protein encoded by this gene is a type 2 member of the phosphatidic acid phosphatase (PAP) family. All type 2 members of this protein family contain 6 transmembrane regions; and a consensus N-glycosylation site. PAPs convert phosphatidic acid to diacylglycerol; and function in de novo synthesis of glycerolipids as well as in receptor-activated signal transduction mediated by phospholipase D. Alternate transcriptional splice variants; encoding different isoforms; have been characterized.

Synonyms:

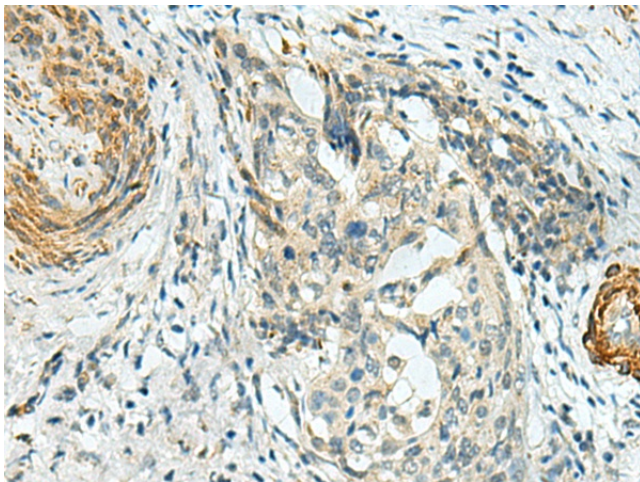
PAP2; PAP2D; PRG5

Protein Families:

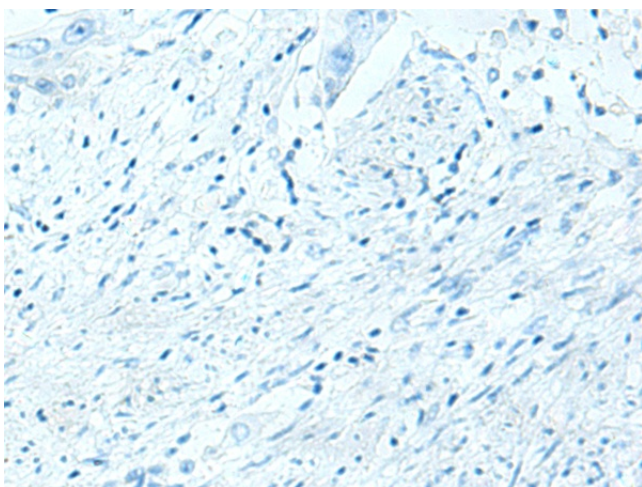
Transmembrane

Product images:

Gel: 8%SDS-PAGE
Lysate: 40 μ g
Lane: HepG2 cell lysate
Primary antibody: TA323362 (PLPPR5 Antibody) at dilution 1/1500
Secondary antibody: Goat anti rabbit IgG at 1/5000 dilution
Exposure time: 30 seconds



Immunohistochemistry of paraffin-embedded Human cervical cancer tissue using TA323362 (PLPPR5 Antibody) at dilution 1/120 (Original magnification: \times 200)



Immunohistochemistry of paraffin-embedded Human cervical cancer tissue using TA323362 (PLPPR5 Antibody) at dilution 1/120, treated with synthetic peptide. (Original magnification: $\times 200$)