

Product datasheet for **TA323358**

TP53BP2 Rabbit Polyclonal Antibody

Product data:

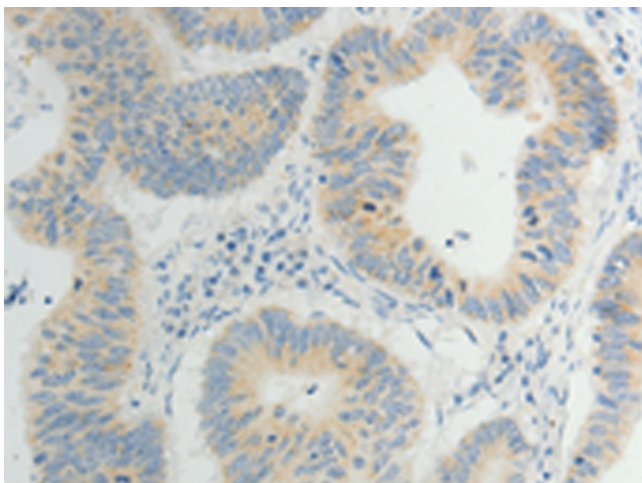
Product Type:	Primary Antibodies
Applications:	IHC
Recommended Dilution:	IHC: 5-20 Positive control: Human gastric cancer Predicted cell location: Cytoplasm
Reactivity:	Human, Mouse
Host:	Rabbit
Isotype:	IgG
Clonality:	Polyclonal
Immunogen:	Synthetic peptide corresponding to a region derived from 482-495 amino acids of human tumor protein p53 binding protein, 2
Formulation:	PBS pH7.3, 0.05% NaN ₃ , 50% glycerol
Concentration:	lot specific
Purification:	Antigen affinity purification
Conjugation:	Unconjugated
Storage:	Store at -20°C as received.
Stability:	Stable for 12 months from date of receipt.
Gene Name:	tumor protein p53 binding protein 2
Database Link:	NP_005417 Entrez Gene 7159 Human Q13625
Background:	This gene encodes a member of the ASPP (apoptosis-stimulating protein of p53) family of p53 interacting proteins. The protein contains four ankyrin repeats and an SH3 domain involved in protein-protein interactions. It is localized to the perinuclear region of the cytoplasm; and regulates apoptosis and cell growth through interactions with other regulatory molecules including members of the p53 family. Multiple transcript variants encoding different isoforms have been found for this gene.
Synonyms:	53BP2; ASPP2; BBP; P53BP2; PPP1R13A



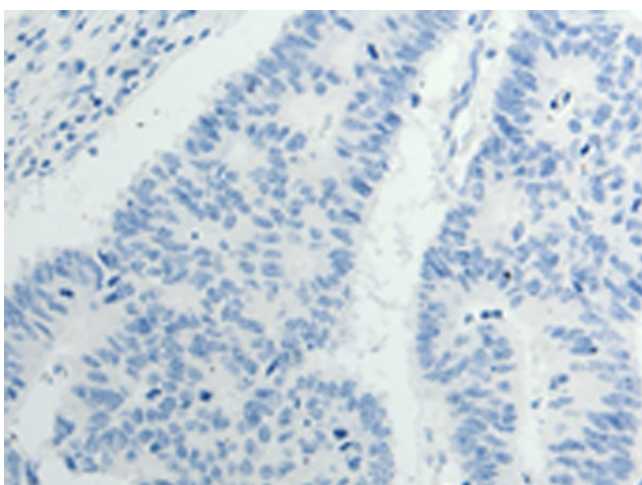
[View online »](#)

Protein Families: Druggable Genome

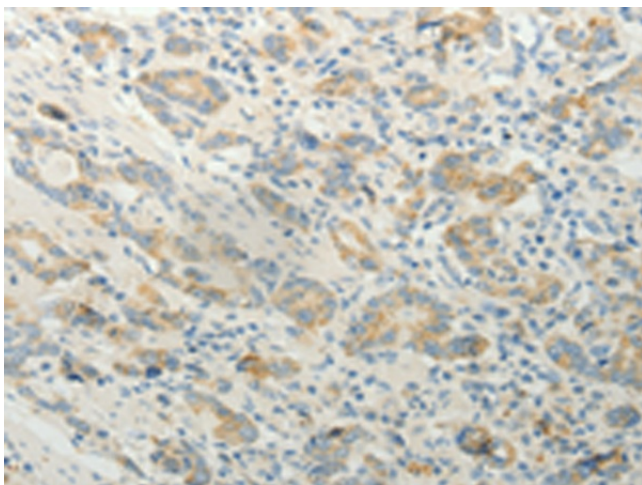
Product images:



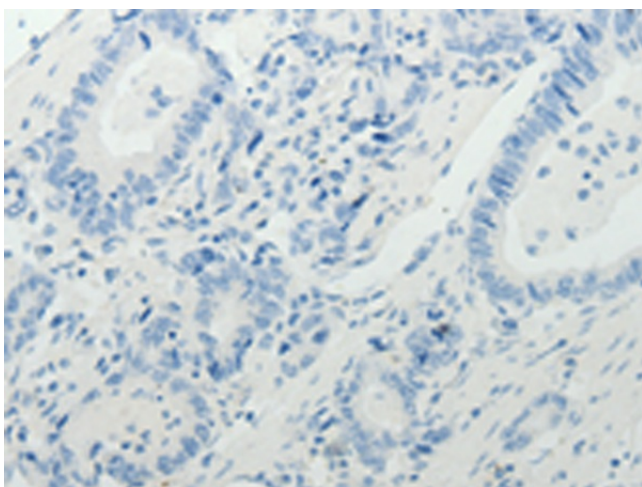
Immunohistochemistry of paraffin-embedded Human gastric cancer tissue using TA323358 (TP53BP2 Antibody) at dilution 1/5 (Original magnification: ×200)



Immunohistochemistry of paraffin-embedded Human gastric cancer tissue using TA323358 (TP53BP2 Antibody) at dilution 1/5, treated with synthetic peptide. (Original magnification: ×200)



Immunohistochemistry of paraffin-embedded Human colon cancer tissue using TA323358 (TP53BP2 Antibody) at dilution 1/5 (Original magnification: $\times 200$)



Immunohistochemistry of paraffin-embedded Human colon cancer tissue using TA323358 (TP53BP2 Antibody) at dilution 1/5, treated with synthetic peptide. (Original magnification: $\times 200$)