

Product datasheet for **TA323352**

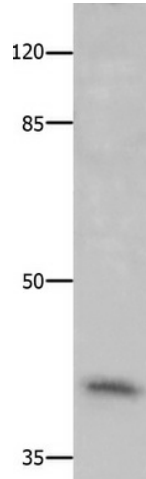
CCRK (CDK20) Rabbit Polyclonal Antibody

Product data:

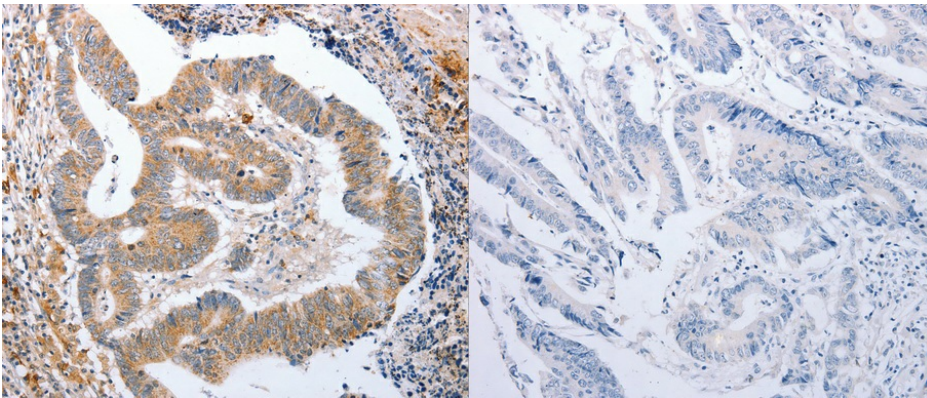
Product Type:	Primary Antibodies
Applications:	IHC, WB
Recommended Dilution:	ELISA: 1:1000-2000, WB: 1:200-1000, IHC: 1:25-100
Reactivity:	Human, Mouse, Rat
Host:	Rabbit
Isotype:	IgG
Clonality:	Polyclonal
Immunogen:	Full length fusion protein
Formulation:	PBS pH7.3, 0.05% NaN ₃ , 50% glycerol
Concentration:	lot specific
Purification:	Antigen affinity purification
Conjugation:	Unconjugated
Storage:	Store at -20°C as received.
Stability:	Stable for 12 months from date of receipt.
Predicted Protein Size:	31 kDa
Gene Name:	cyclin-dependent kinase 20
Database Link:	NP_001034892 Entrez Gene 105278 MouseEntrez Gene 364666 RatEntrez Gene 23552 Human Q8IZL9
Background:	The protein encoded by this gene contains a kinase domain most closely related to the cyclin-dependent protein kinases. The encoded kinase may activate cyclin-dependent kinase 2 and is involved in cell growth. Alternatively spliced transcript variants encoding distinct isoforms have been reported.
Synonyms:	CCRK; CDCH; P42; PNQALRE
Protein Families:	Druggable Genome, Protein Kinase



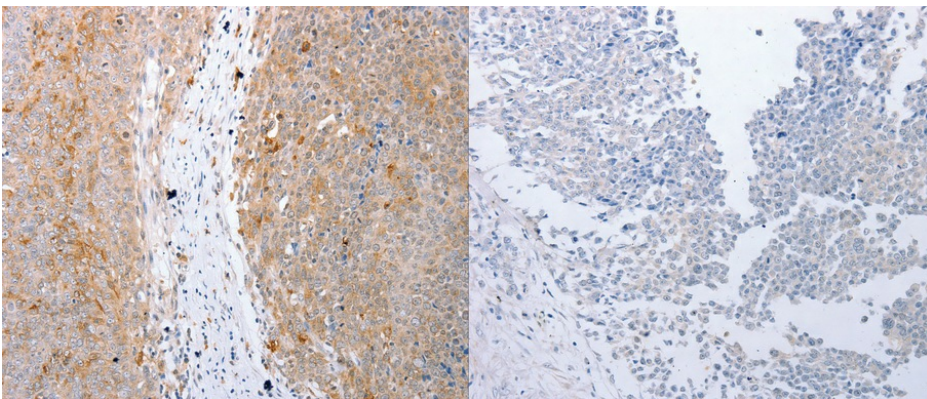
[View online »](#)

Product images:

Western blot analysis of HT-29 cells using TA323352 (CDK20 Antibody) at dilution 1/300



Immunohistochemistry of paraffin-embedded Human colon cancer tissue using TA323352 (CDK20 Antibody) (left image) at dilution 1/15, the image on the right is treated with the fusion protein. (Original magnification: x200)



Immunohistochemistry of paraffin-embedded Human ovarian cancer tissue using TA323352 (CDK20 Antibody) (left image) at dilution 1/15, the image on the right is treated with the fusion protein. (Original magnification: x200)