

## Product datasheet for **TA323349S**

### ENTR1 Rabbit Polyclonal Antibody

#### Product data:

Product Type:	Primary Antibodies
Applications:	IHC, WB
Recommended Dilution:	WB: 500-2000 WB positive control: Human prostate tissue IHC: 50-200 Positive control: Human liver cancer Predicted cell location: Cytoplasm
Reactivity:	Human, Mouse
Host:	Rabbit
Isotype:	IgG
Clonality:	Polyclonal
Immunogen:	Fusion protein corresponding to a region derived from 261-371 amino acids of human serologically defined colon cancer antigen 3
Formulation:	PBS pH7.3, 0.05% NaN <sub>3</sub> , 50% glycerol
Purification:	Antigen affinity purification
Conjugation:	Unconjugated
Storage:	Store at -20°C as received.
Stability:	Stable for 12 months from date of receipt.
Predicted Protein Size:	46 kDa
Gene Name:	serologically defined colon cancer antigen 3
Database Link:	<a href="#">NP_001034796</a> <a href="#">Entrez Gene 68112 Mouse</a> <a href="#">Entrez Gene 10807 Human</a> <a href="#">Q96C92</a>



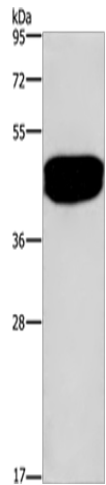
[View online »](#)

**Background:**

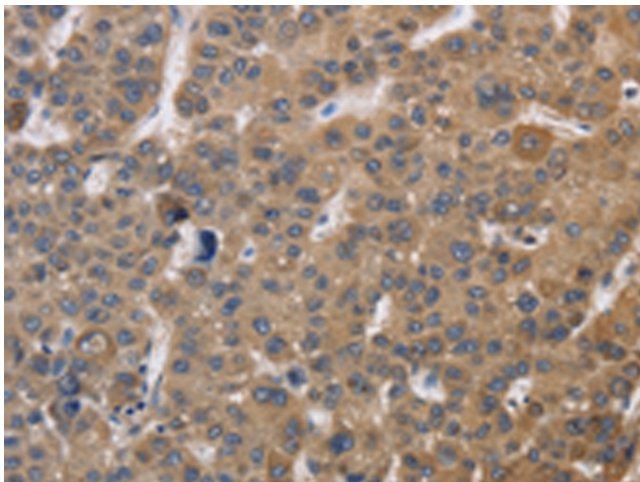
SDCCAG3 protein contains the region similar to the coiled-coil domain of the myosin tail. The same domain is present in the proteins related to the organelles/proteins trafficking; such as kinesin; Golgin-160; and dynein. SDCCAG3 function might be related to protein trafficking and secretion; May be involved in modulation of TNF response; May be involved in presentation of TNFRSF1A on the cell surface. Interaction of SDCCAG3 with the Arf GTPase activating protein GIT1 (G protein-coupled receptor kinase interactor-1). Overexpression of an ArfGAP-negative version of GIT1 also results in an increased number of multinucleate cells suggesting regulation of Arf-mediated vesicular trafficking or signaling via SDCCAG3.

**Synonyms:**

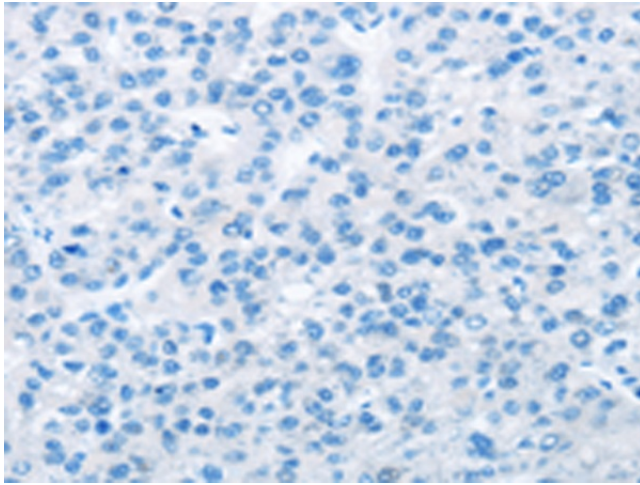
NY-CO-3

**Product images:**

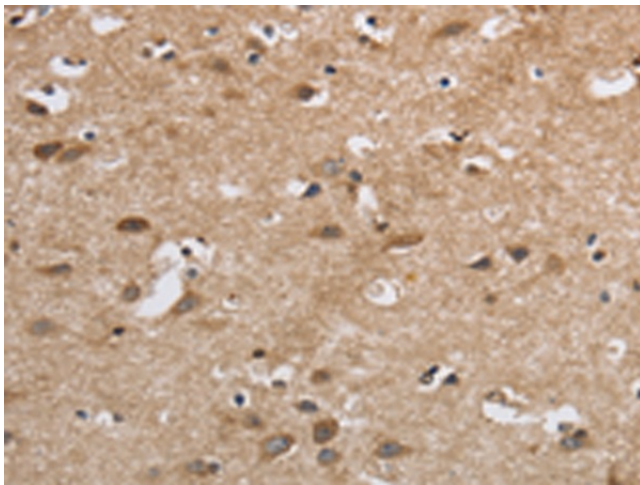
Gel: 8%SDS-PAGE  
Lysate: 40  $\mu$ g  
Lane: Human prostate tissue  
Primary antibody: [TA323349] (ENTR1 Antibody) at dilution 1/500  
Secondary antibody: Goat anti rabbit IgG at 1/8000 dilution  
Exposure time: 20 seconds



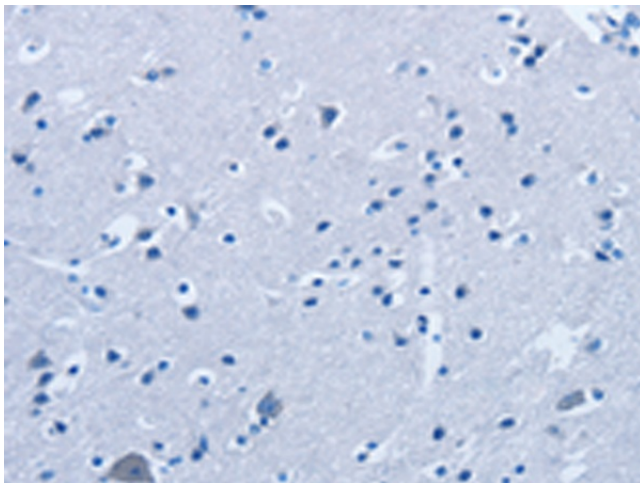
Immunohistochemistry of paraffin-embedded Human liver cancer tissue using [TA323349] (ENTR1 Antibody) at dilution 1/30 (Original magnification:  $\times$ 200)



Immunohistochemistry of paraffin-embedded Human liver cancer tissue using [TA323349] (ENTR1 Antibody) at dilution 1/30, treated with fusion protein. (Original magnification:  $\times 200$ )



Immunohistochemistry of paraffin-embedded Human brain tissue using [TA323349] (ENTR1 Antibody) at dilution 1/30 (Original magnification:  $\times 200$ )



Immunohistochemistry of paraffin-embedded Human brain tissue using [TA323349] (ENTR1 Antibody) at dilution 1/30, treated with fusion protein. (Original magnification:  $\times 200$ )