

Product datasheet for **TA323347S**

ADAMTSL1 Rabbit Polyclonal Antibody

Product data:

| | |
|-----------------------|---|
| Product Type: | Primary Antibodies |
| Applications: | IHC |
| Recommended Dilution: | IHC: 15-50 Positive control: Human lung cancer Predicted cell location: Cytoplasm |
| Reactivity: | Human, Mouse |
| Host: | Rabbit |
| Isotype: | IgG |
| Clonality: | Polyclonal |
| Immunogen: | Fusion protein corresponding to a region derived from 116-329 amino acids of human ADAMTS-like 1 |
| Formulation: | PBS pH7.3, 0.05% NaN ₃ , 50% glycerol |
| Purification: | Antigen affinity purification |
| Conjugation: | Unconjugated |
| Storage: | Store at -20°C as received. |
| Stability: | Stable for 12 months from date of receipt. |
| Gene Name: | ADAMTS like 1 |
| Database Link: | NP_640329 Entrez Gene 77739 Mouse Entrez Gene 92949 Human Q8N6G6 |
| Background: | This gene encodes a secreted protein and member of the ADAMTS (a disintegrin and metalloproteinase with thrombospondin motif) family. This protein lacks the metalloproteinase and disintegrin-like domains, which are typical of the ADAMTS family, but contains other ADAMTS domains, including the thrombospondin type 1 motif. This protein may have important functions in the extracellular matrix. Alternative splicing results in multiple transcript variants encoding distinct proteins.? |

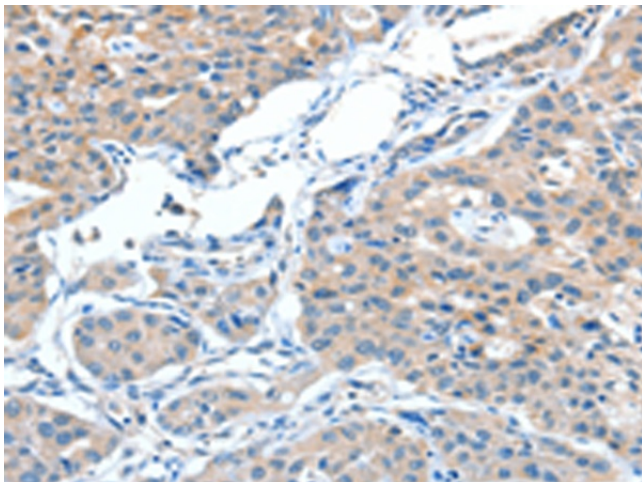


[View online »](#)

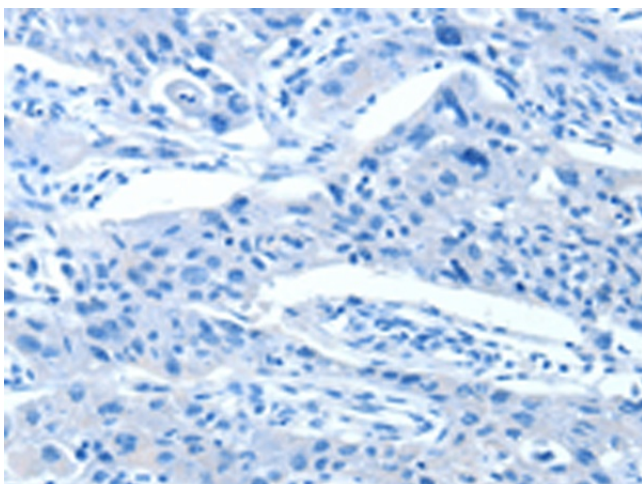
Synonyms: ADAM-TS related protein 1; ADAMTS-like 1; ADAMTSR1; C9orf94; DKFZp686L03130; FLJ35283; FLJ41032; FLJ46891; MGC40193; MGC118803; MGC118805; OTTHUMP00000021085; OTTHUMP00000045125; PUNCTIN

Protein Families: Secreted Protein

Product images:



Immunohistochemistry of paraffin-embedded Human lung cancer tissue using [TA323347] (ADAMTSL1 Antibody) at dilution 1/15 (Original magnification: $\times 200$)



Immunohistochemistry of paraffin-embedded Human lung cancer tissue using [TA323347] (ADAMTSL1 Antibody) at dilution 1/15, treated with fusion protein. (Original magnification: $\times 200$)