

## Product datasheet for **TA323346**

### ADAMTSL1 Rabbit Polyclonal Antibody

#### Product data:

Product Type:	Primary Antibodies
Applications:	IHC
Recommended Dilution:	IHC: 15-50 Positive control: Human lung cancer Predicted cell location: Cytoplasm
Reactivity:	Human, Mouse
Host:	Rabbit
Isotype:	IgG
Clonality:	Polyclonal
Immunogen:	Fusion protein corresponding to a region derived from 116-329 amino acids of human ADAMTS-like 1
Formulation:	PBS pH7.3, 0.05% NaN <sub>3</sub> , 50% glycerol
Concentration:	lot specific
Purification:	Antigen affinity purification
Conjugation:	Unconjugated
Storage:	Store at -20°C as received.
Stability:	Stable for 12 months from date of receipt.
Gene Name:	ADAMTS like 1
Database Link:	<a href="#">NP_640329</a> <a href="#">Entrez Gene 77739 Mouse</a> <a href="#">Entrez Gene 92949 Human</a> <a href="#">Q8N6G6</a>

**Background:** This gene encodes a secreted protein and member of the ADAMTS (a disintegrin and metalloproteinase with thrombospondin motif) family. This protein lacks the metalloproteinase and disintegrin-like domains, which are typical of the ADAMTS family, but contains other ADAMTS domains, including the thrombospondin type 1 motif. This protein may have important functions in the extracellular matrix. Alternative splicing results in multiple transcript variants encoding distinct proteins.?

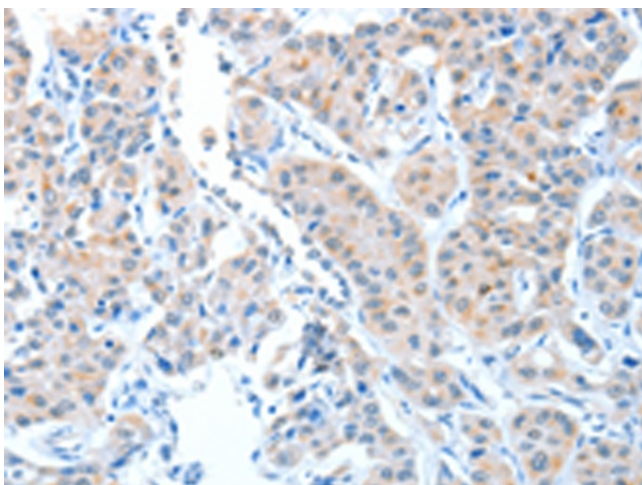


[View online »](#)

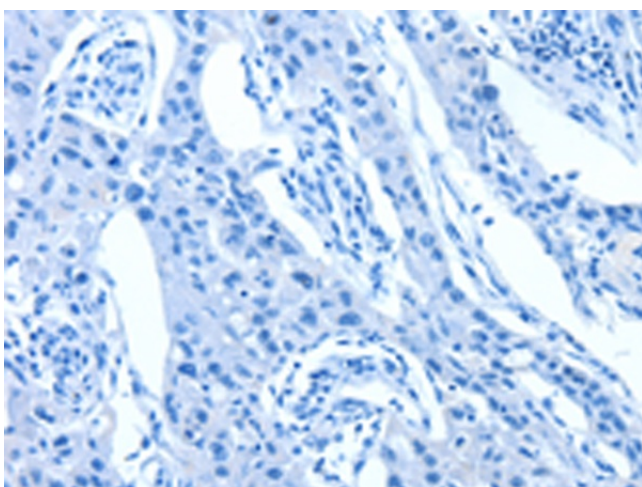
**Synonyms:** ADAM-TS related protein 1; ADAMTS-like 1; ADAMTSR1; C9orf94; DKFZp686L03130; FLJ35283; FLJ41032; FLJ46891; MGC40193; MGC118803; MGC118805; OTTHUMP00000021085; OTTHUMP00000045125; PUNCTIN

**Protein Families:** Secreted Protein

**Product images:**



Immunohistochemistry of paraffin-embedded Human lung cancer tissue using TA323346 (ADAMTSL1 Antibody) at dilution 1/25 (Original magnification:  $\times 200$ )



Immunohistochemistry of paraffin-embedded Human lung cancer tissue using TA323346 (ADAMTSL1 Antibody) at dilution 1/25, treated with fusion protein. (Original magnification:  $\times 200$ )