

Product datasheet for **TA323342**

PEG10 Rabbit Polyclonal Antibody

Product data:

Product Type:	Primary Antibodies
Applications:	WB
Recommended Dilution:	WB: 200-1000 WB positive control: 231 and A549 cells
Reactivity:	Human
Host:	Rabbit
Isotype:	IgG
Clonality:	Polyclonal
Immunogen:	Fusion protein corresponding to C terminal 250 amino acids of human paternally expressed 10
Formulation:	PBS pH7.3, 0.05% NaN ₃ , 50% glycerol
Concentration:	lot specific
Purification:	Antigen affinity purification
Conjugation:	Unconjugated
Storage:	Store at -20°C as received.
Stability:	Stable for 12 months from date of receipt.
Predicted Protein Size:	80 kDa
Gene Name:	paternally expressed 10
Database Link:	NP_001035242 Entrez Gene 23089 Human Q86TG7



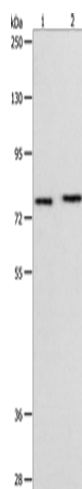
[View online »](#)

Background:

This is a paternally expressed imprinted gene that encodes transcripts containing two overlapping open reading frames (ORFs); RF1 and RF1/RF2; as well as retroviral-like slippage and pseudoknot elements; which can induce a -1 nucleotide frame-shift. ORF1 encodes a shorter isoform with a CCHC-type zinc finger motif containing a sequence characteristic of gag proteins of most retroviruses and some retrotransposons. The longer isoform is the result of -1 translational frame-shifting leading to translation of a gag/pol-like protein combining RF1 and RF2. It contains the active-site consensus sequence of the protease domain of pol proteins. Additional isoforms resulting from alternatively spliced transcript variants; as well as from use of upstream non-AUG (CUG) start codon; have been reported for this gene. Increased expression of this gene is associated with hepatocellular carcinomas.

Synonyms:

EDR; HB-1; Mar2; Mart2; MEF3L; RGAG3

Product images:

Gel: 8%SDS-PAGE
Lysate: 40 µg
Lane 1-2: 231 cells
A549 cells
Primary antibody: TA323342 (PEG10 Antibody) at dilution 1/200
Secondary antibody: Goat anti rabbit IgG at 1/8000 dilution
Exposure time: 1 minute