

## Product datasheet for **TA323339**

### smooth muscle Myosin heavy chain 11 (MYH11) Rabbit Polyclonal Antibody

#### Product data:

Product Type:	Primary Antibodies
Applications:	IHC
Recommended Dilution:	IHC: 50-200 Positive control: Human brain Predicted cell location: Cytoplasm
Reactivity:	Human, Mouse, Rat
Host:	Rabbit
Isotype:	IgG
Clonality:	Polyclonal
Immunogen:	Synthetic peptide corresponding to a region derived from 1958-1972 amino acids of Human myosin, heavy chain 11, smooth muscle
Formulation:	PBS pH7.3, 0.05% NaN <sub>3</sub> , 50% glycerol
Concentration:	lot specific
Purification:	Antigen affinity purification
Conjugation:	Unconjugated
Storage:	Store at -20°C as received.
Stability:	Stable for 12 months from date of receipt.
Gene Name:	myosin, heavy chain 11, smooth muscle
Database Link:	<a href="#">NP_074035</a> <a href="#">Entrez Gene 17880 Mouse</a> <a href="#">Entrez Gene 24582 Rat</a> <a href="#">Entrez Gene 4629 Human</a> <a href="#">P35749</a>



[View online »](#)

**Background:**

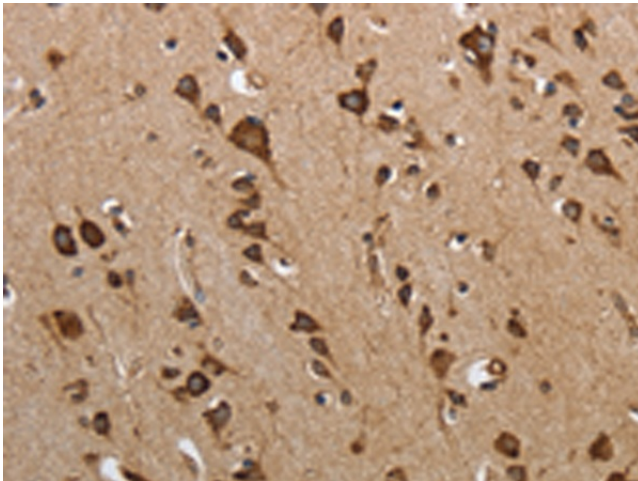
The protein encoded by this gene is a smooth muscle myosin belonging to the myosin heavy chain family. The gene product is a subunit of a hexameric protein that consists of two heavy chain subunits and two pairs of non-identical light chain subunits. It functions as a major contractile protein; converting chemical energy into mechanical energy through the hydrolysis of ATP. The gene encoding a human ortholog of rat NUDE1 is transcribed from the reverse strand of this gene; and its 3' end overlaps with that of the latter. The pericentric inversion of chromosome 16 [inv(16)(p13q22)] produces a chimeric transcript that encodes a protein consisting of the first 165 residues from the N terminus of core-binding factor beta in a fusion with the C-terminal portion of the smooth muscle myosin heavy chain. This chromosomal rearrangement is associated with acute myeloid leukemia of the M4Eo subtype. Alternative splicing generates isoforms that are differentially expressed; with ratios changing during muscle cell maturation. Alternatively spliced transcript variants encoding different isoforms have been identified.

**Synonyms:**

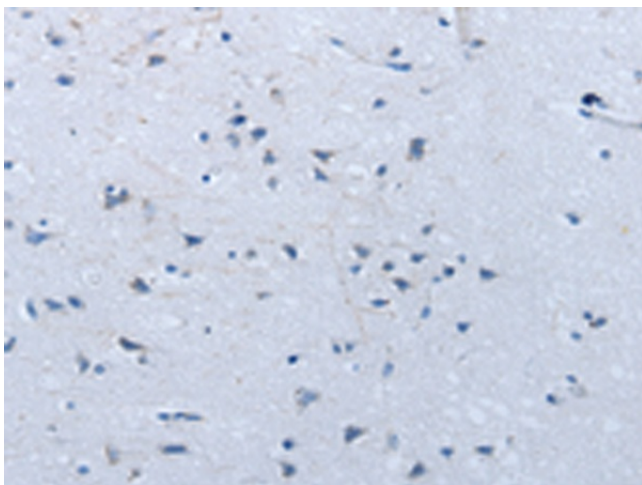
AAT4; FAA4; SMHC; SMMHC

**Protein Pathways:**

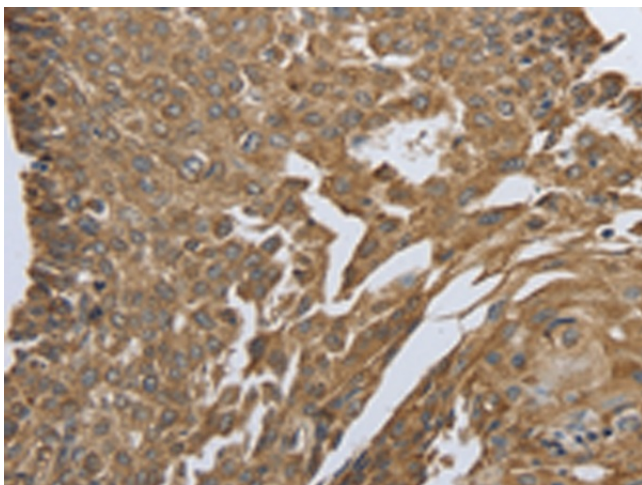
Tight junction, Vascular smooth muscle contraction, Viral myocarditis

**Product images:**

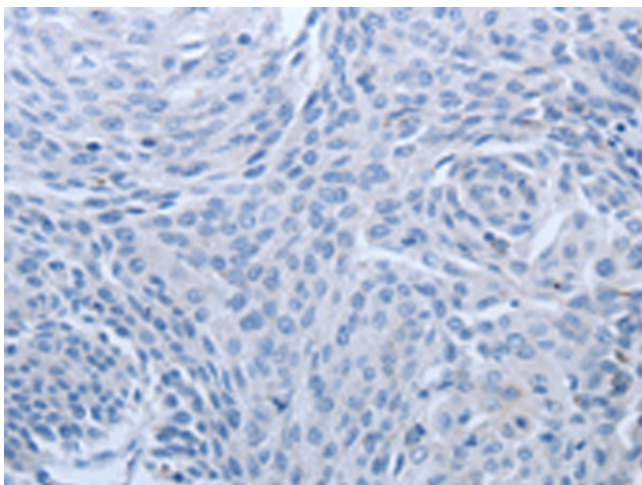
Immunohistochemistry of paraffin-embedded Human brain tissue using TA323339 (MYH11 Antibody) at dilution 1/25 (Original magnification: ×200)



Immunohistochemistry of paraffin-embedded Human brain tissue using TA323339 (MYH11 Antibody) at dilution 1/25, treated with synthetic peptide. (Original magnification:  $\times 200$ )



Immunohistochemistry of paraffin-embedded Human cervical cancer tissue using TA323339 (MYH11 Antibody) at dilution 1/25 (Original magnification:  $\times 200$ )



Immunohistochemistry of paraffin-embedded Human cervical cancer tissue using TA323339 (MYH11 Antibody) at dilution 1/25, treated with synthetic peptide. (Original magnification:  $\times 200$ )